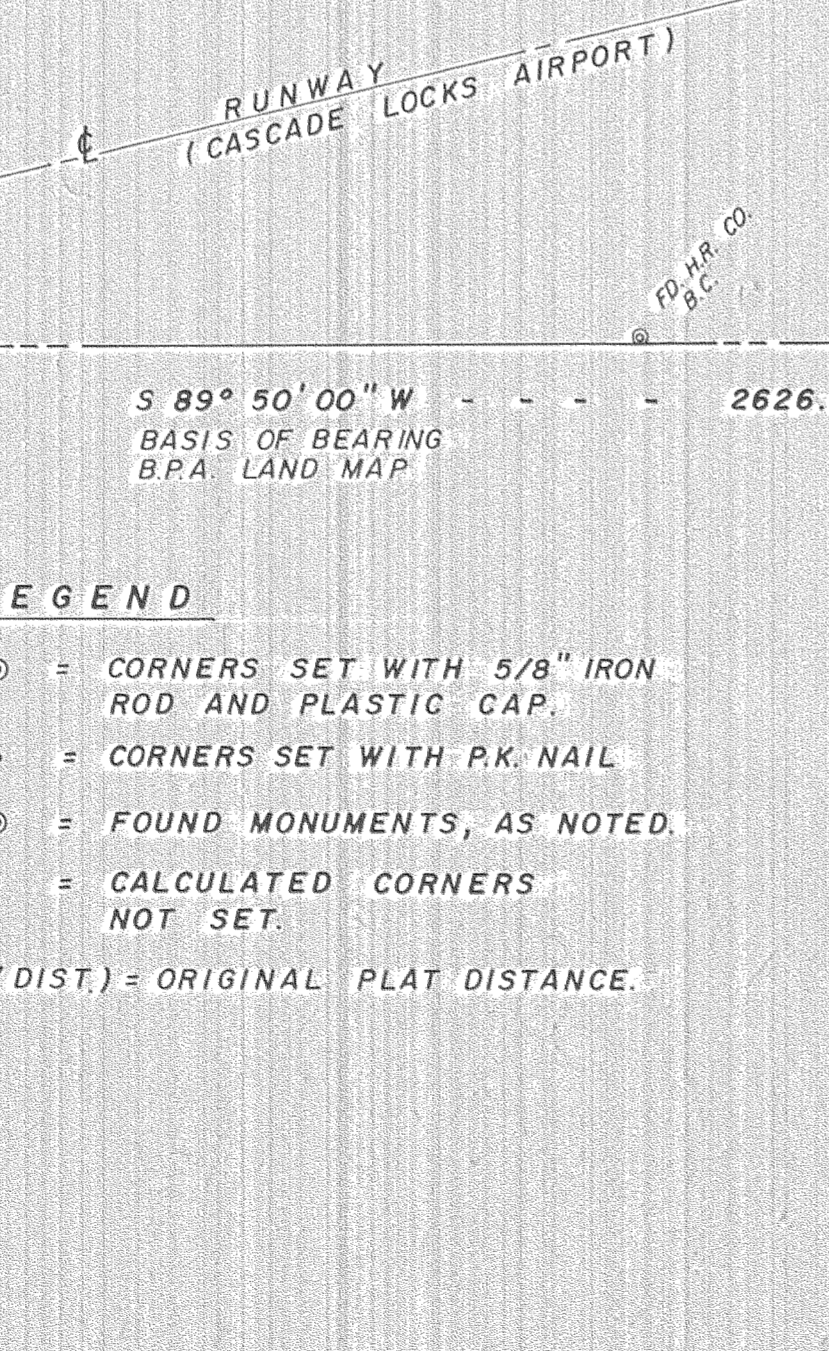
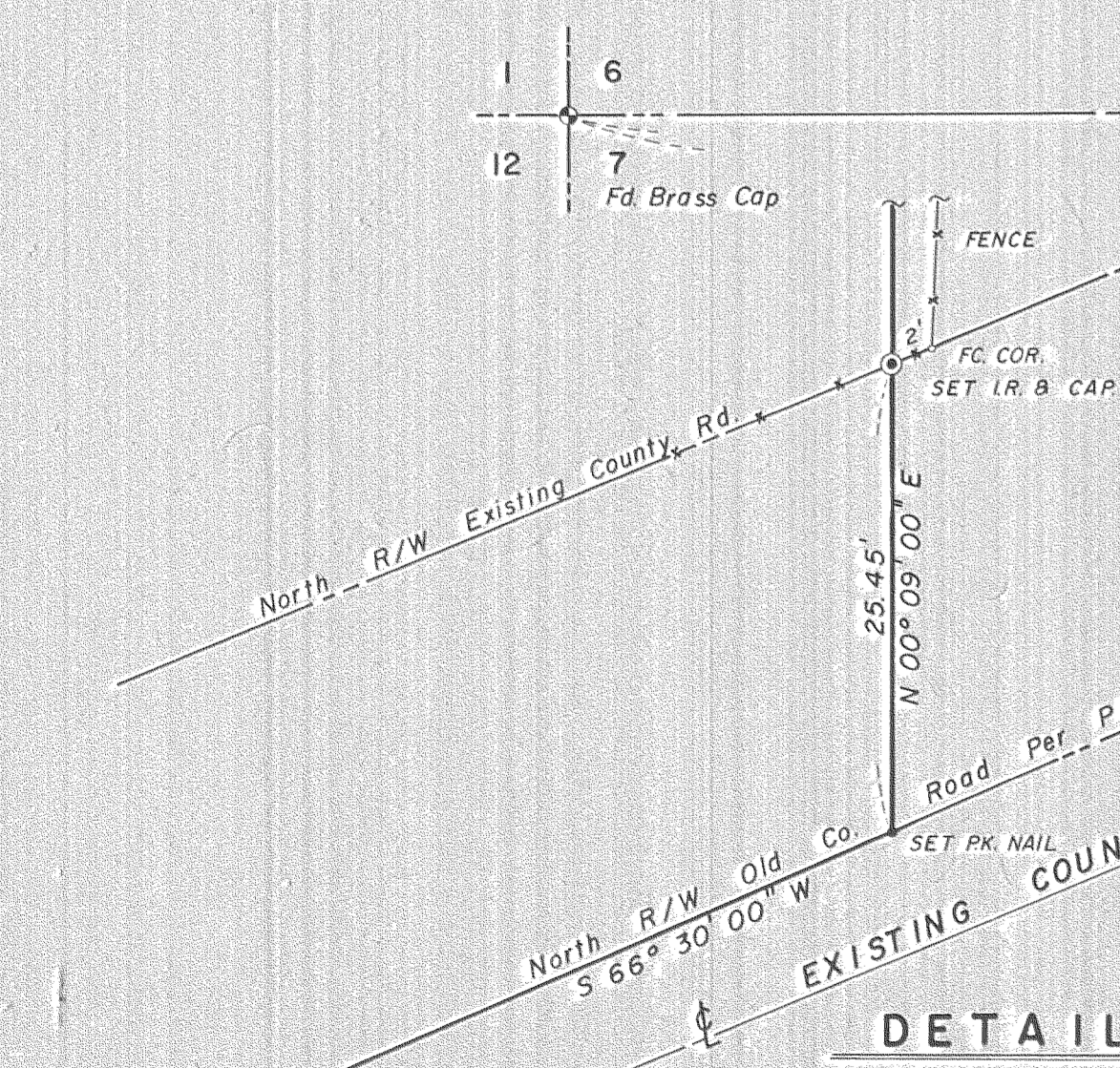
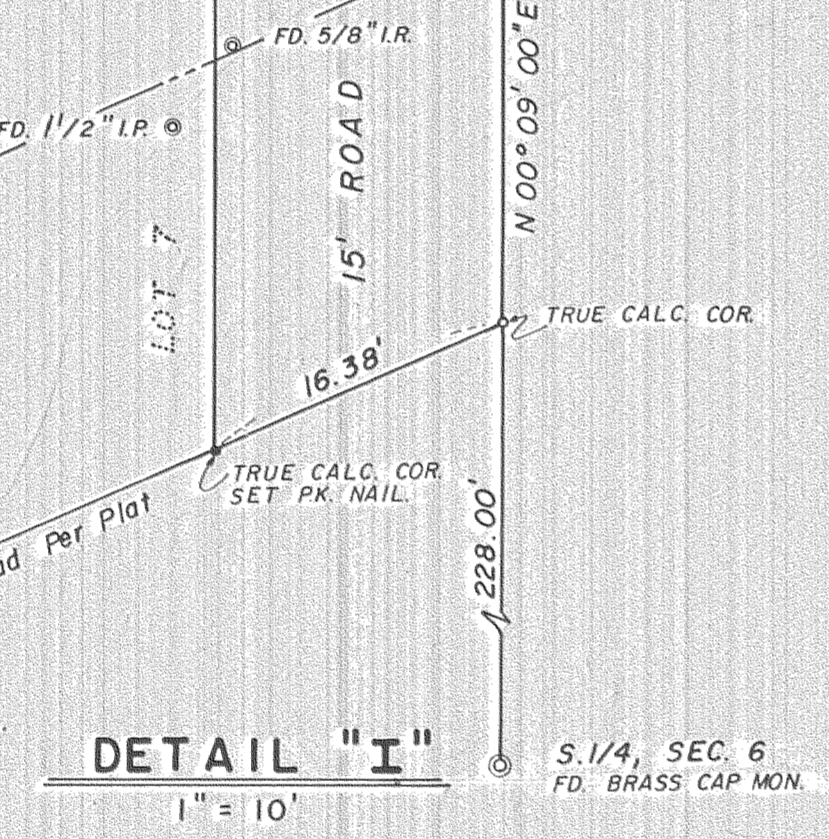
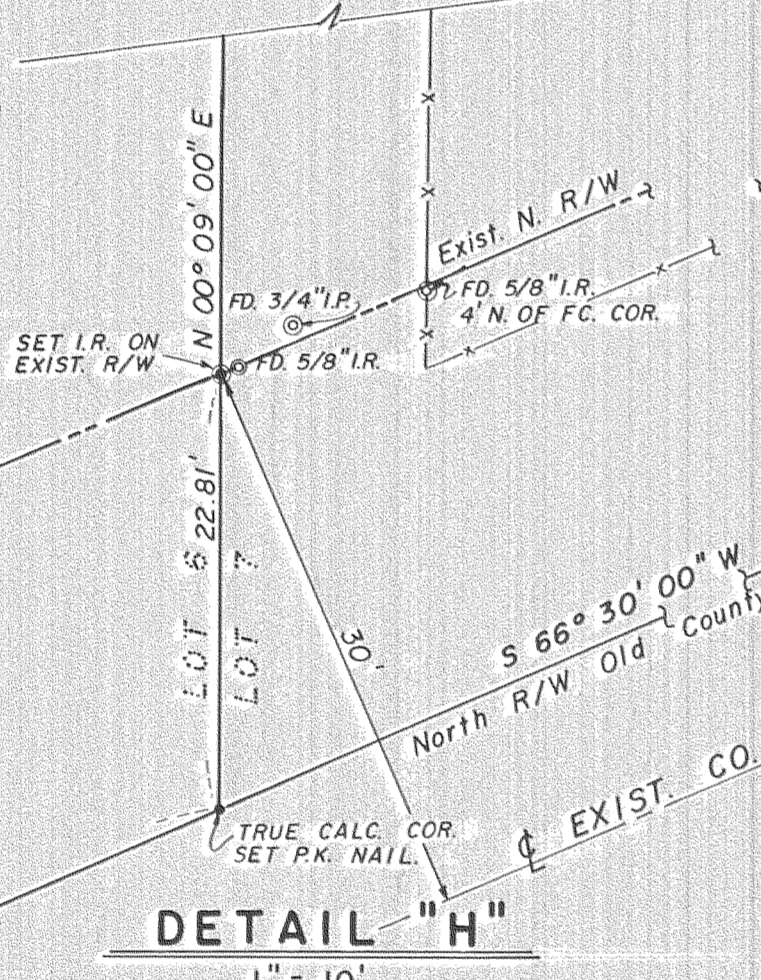
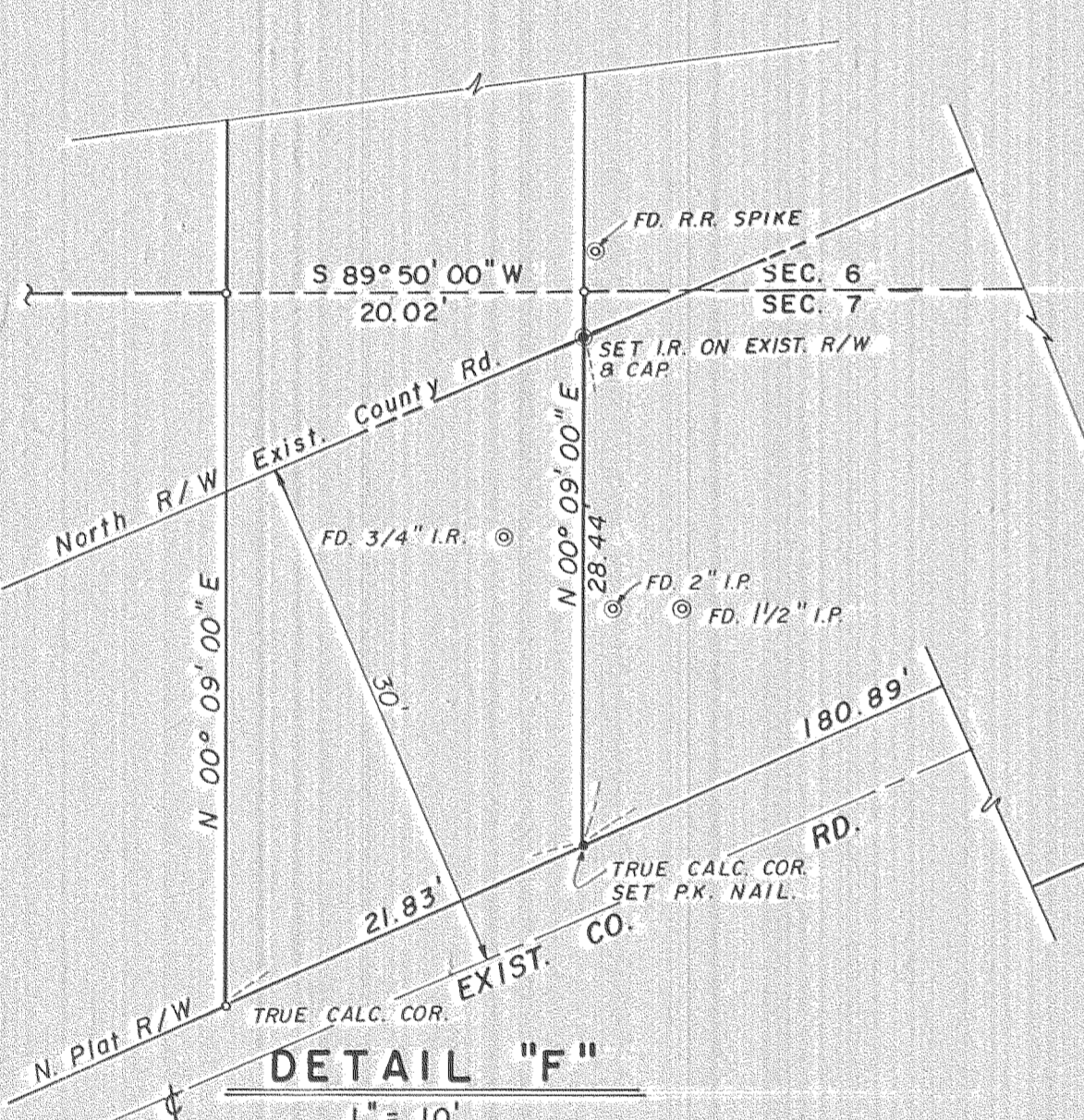
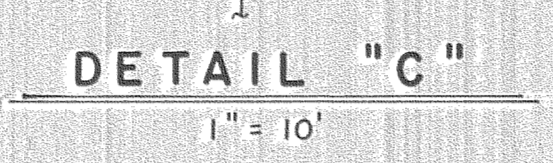


NOTE:
FOUND MONUMENT SHOWN ON DETAILS "A" & "I" ARE AT SCALE RELATIVE TO TRUE CALCULATED CORNERS.



- LEGEND**
- ⊙ = CORNERS SET WITH 5/8" IRON ROD AND PLASTIC CAP.
 - = CORNERS SET WITH P.K. NAIL
 - ⊙ = FOUND MONUMENTS, AS NOTED.
 - = CALCULATED CORNERS NOT SET.
- (DIST) = ORIGINAL PLAT DISTANCE.

DIVISION No. 1 SUBDIVISION
IN SECTIONS 6 AND 7
TWP. 2N., RANGE 8E. WM.
HOOD RIVER COUNTY, OREGON.

FILED
JUN 30 1986
Richard G. Arnold
COUNTY SURVEYOR

Date	No.	Revisions	By	App.
MAP OF SURVEY FOR OREGON TRANSPORTATION DIVISION AERONAUTICS DIVISION IN THE S.W. 1/4, SEC. 6, T.2N. R.8E. W.M. City of Cascade Locks Hood River County, Oregon.				
Design	TENNESON ENGINEERING CORP. Consulting Engineers 409 Lincoln Street The Dalles, Oregon			Scale SHOWN
Survey	D.L.T.			Date 5-5-86
Drawn	Checked	Approved	Work Order No.	Sheet
S.D.H.			6781	1 of 1