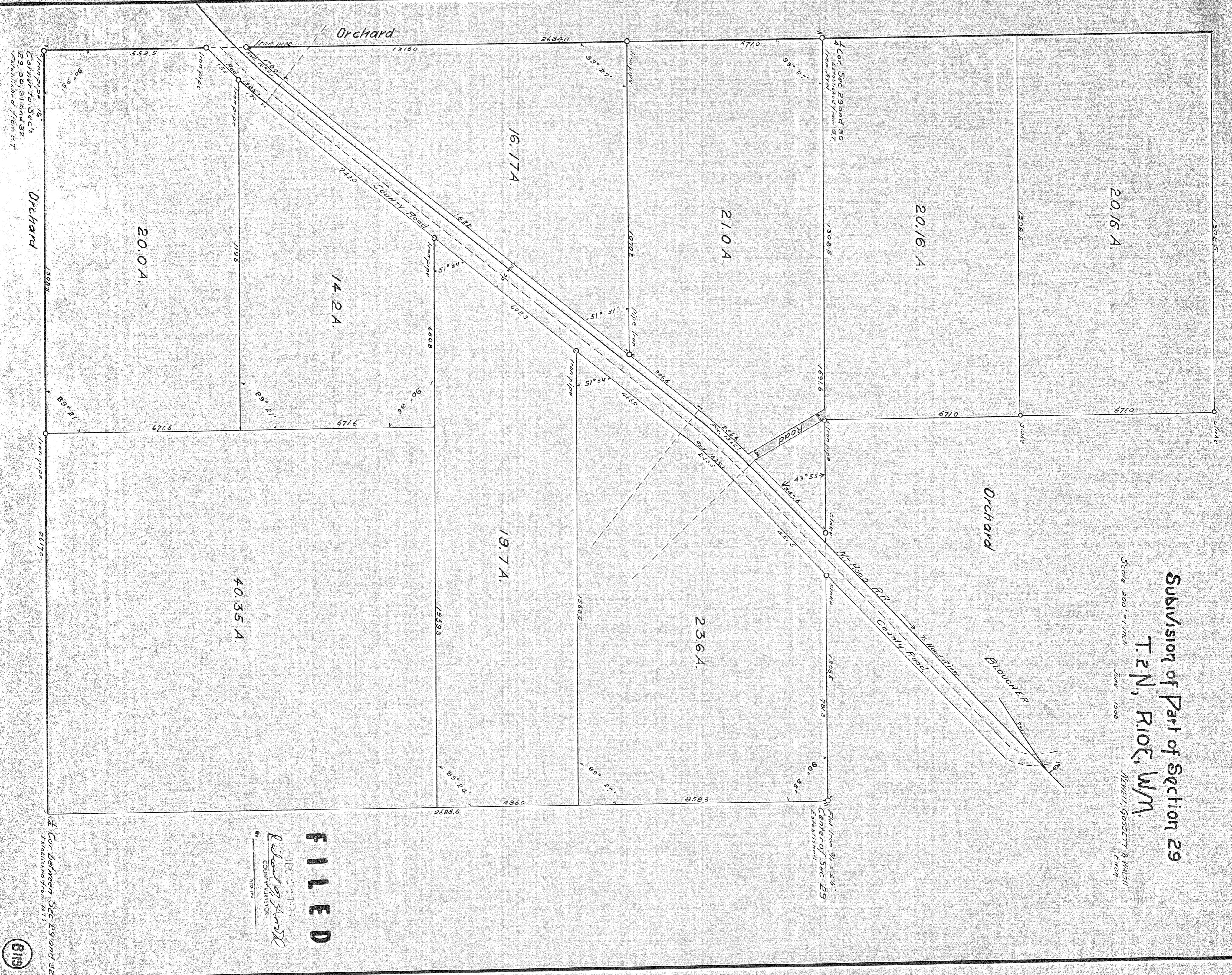


Subdivision of Part of Section 29
 T. 2 N., R. 10 E., W. 4 N.

Scale 200' = 1" inch
 Date 1908

NEWELL, GOSSETT & WILSH
 ENGRS.



FILED

DEC 2 1908
 Nelson G. Smith
 COUNTY SUPERVISOR

Car between Sec 29 and 32
 Established from 87's

8119

85088