

OREGON STATE HIGHWAY DIVISION
 LONG PRAIRIE ROAD - WILLOW FLAT ROAD SECTION
 MT. HOOD HIGHWAY
 HOOD RIVER COUNTY
 SCALE: 1"=100'
 JUNE, 1983
 PART OF DRGS. 9B-2-11 & 9B-2-12

GRID BEARINGS - NORTH ZONE

- o FOUND MONUMENT - AS NOTED
- * 'Set Rod' Indicates - Set 5/8" x 30" Iron Rod with O.S.H.D Alum. Cap or As Noted

1984 - 1985 RESURVEY LEGEND

- o FOUND DATE NAIL WITH 5/8" DIAMETER FLAT HEAD
- * MONUMENT NOT FOUND 1984-1985 SURVEY

FILED

AUG 8 1985

Richard J. Arnold
 COUNTY SURVEYOR

CS # 85052

T.1N., R.10E., W.M.

NARRATIVE

PURPOSE OF THIS 1984-1985 SURVEY IS TO TIE AND CALCULATE POSITIONS OF FOUND O.S.H.D. RIGHT OF WAY AND CENTERLINE MONUMENTS.

HELD COORDINATES N. 703,578.88 AND E. 1,732,011.06 AT THE S.W. CORNER SECTION 2, T.1N., R.10E., W.M. FOR COORDINATE CONTROL OF TRAVERSE, PER MAY 1967 R/W DRG. NO. 9B-2-11 REVISED SEPT. 1977.

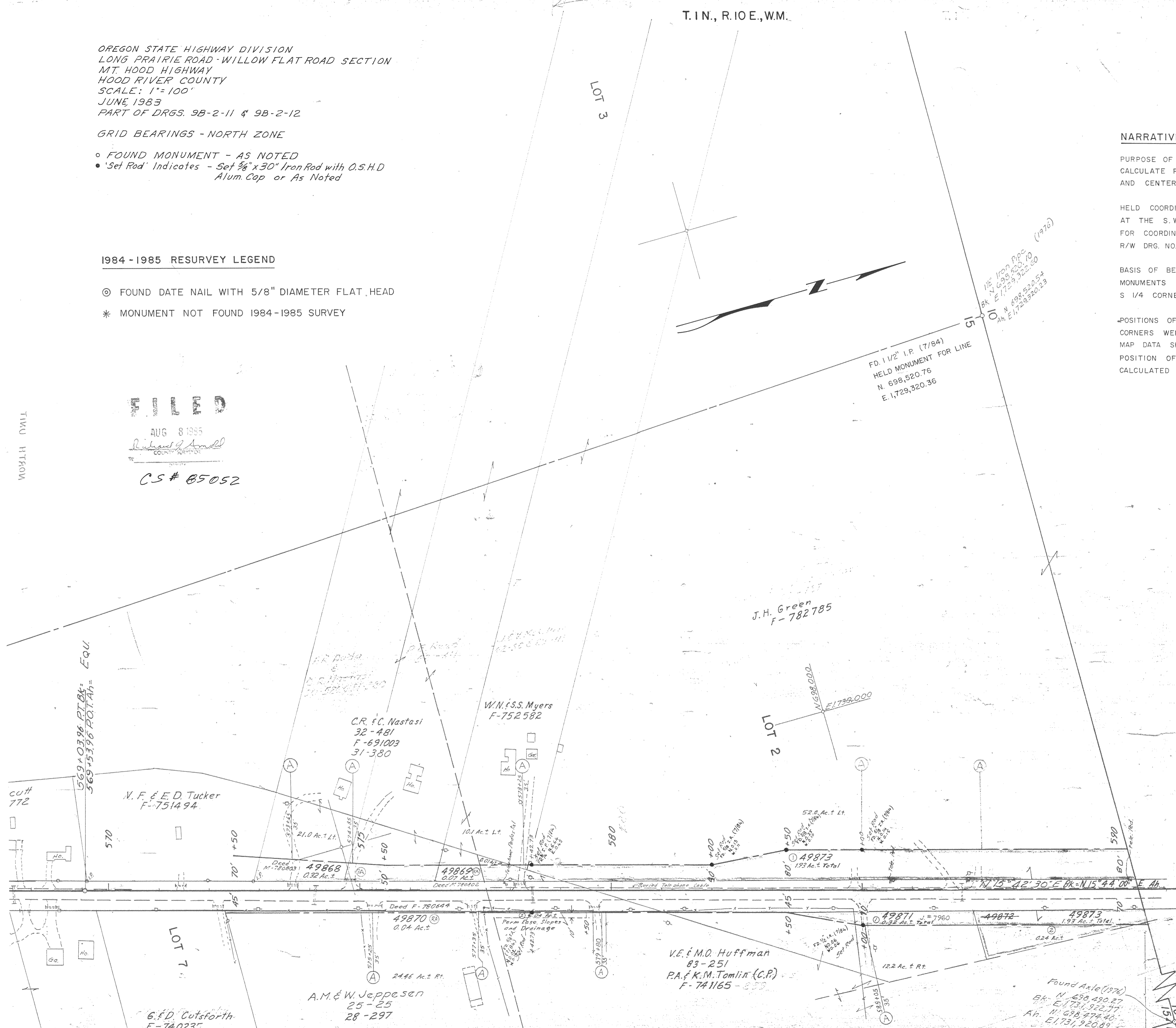
BASIS OF BEARINGS IS S 28° 00' 40" W BETWEEN FOUND MONUMENTS AT THE S.W. CORNER SECTION 2 AND THE S 1/4 CORNER SECTION 10, T.1N., R.10E., W.M.

POSITIONS OF CENTERLINE STATIONS AND RIGHT OF WAY CORNERS WERE CALCULATED USING COORDINATES AND MAP DATA SHOWN. FALLINGS INDICATE THE RELATIVE POSITION OF TIED MONUMENTS TO THOSE POSITIONS CALCULATED USING MAP DATA.

FD. 1 1/2" I.P. (7/84)
 N. 698,520.76
 E. 1,729,320.36
 HELD MONUMENT FOR LINE

REGISTERED PROFESSIONAL LAND SURVEYOR

LOUIS J. SPISLA
 870



J.H. Green
 F-782785

W.N. & S.S. Myers
 F-752582

C.R. & C. Nastasi
 32-481
 F-691003
 31-380

N.F. & E.D. Tucker
 F-751494

V.E. & M.O. Huffman
 83-251
 P.A. & K.M. Tomlin (C.P.)
 F-741165

A.M. & W. Jeppesen
 25-25
 28-297

G.E.D. Cutsforth
 F-740235

FD. 1 1/2" I.P. (7/84)
 HELD MONUMENT FOR LINE
 N. 698,520.76
 E. 1,729,320.36

1/2" I.P. (7/84)
 BK N. 698,520.76
 E. 1,729,320.36
 AH. E. 1,729,320.36

Found Axle (1976)
 N. 698,490.87
 E. 1,731,922.77
 N. 698,474.40
 E. 1,731,920.89

FD. 1 1/2" AXLE (7/84)
 N. 698,489.71
 E. 1,731,919.74

FD. 1 1/2" I.P. (7/84)
N. 698,520.76
E. 1,729,320.36
HELD MONUMENT FOR LINE

1/2" Iron Pipe (1976)
Bk. N. 698,520.10
E. 1,729,322.60
A. N. 698,520.54
E. 1,729,320.23

(1985)
1174.79
1174.91

MS. S 86° 38' 17" E'
DEED S 86° 38' 59" E'

LOT 15

E.N. Massey
43-185
J.H. Green (C.P.)
F-782785

S. & M. Fischer
F-710817
W.H. Trygstad
E-700764

J. & R. Stegall
F-720526

S.W. & E. Sorenson
F-742381
P. Managhan & A. Green (C.P.)
F-742380

A.B. & E. Posey
64-532

601 + 0998 P.I.
N. 699,920.47 Bk. = 699,920.77
E. 1,730,746.05 Bk. = 1,730,794.14

L.M. Williams et ux.
69-390
F-751358

B.L. Hanel
37-504

N.E.M. Mooney
49-122

49873
1.93 Ac. Total

49905
0.21 Ac.

49874
0.23 Ac.

49878
4.07 Ac. RT

L.G. & D.M. Nicholson
F-661722

4974
187 Ac. RT

49742
2.2 Ac. RT

49743
166 Ac. ±
Deed F-782375

49744
0.57 Ac. ±
Deed F-782122

W.F.K. Bullack
F-762151
F-780636

A.B.L. Bullack
30-176

M.C. & C. Green
F-661737

R.E. Klobas & E.M. Herman
F-680008

M.A. Hughes
78-113

AXIS FOUND (1976)
N. 698,490.27
E. 1,731,922.77
N. 698,472.40
E. 1,731,920.89
FD. 1 1/2" I.P. (7/84)
N. 698,498.71
E. 1,731,929.74

1" 30' GR
76-8-42.00'
75-4-40.63'
300' Sps.
S-2° 15'
d=0.5

LOT 16

LOT 9

617 + 01.90 P.O.C.

FD. 1 1/2" I.P. (1971)
N. 701,396.98
E. 1,730,682.36

East Fork Irrigation District
28-379

LOT 7

LOT 2

LOT 1

LOT 8

1°15' CL
T_A = 30°27'
T_S = 1447.89
400 Sps.
S = 2°30'
a = 0.3125

E.F.L. Land
F-711042

East Fork Irrigation District
28-379

49753
2.65 Ac. ±
Deed F-782101

49752
0.6 Ac. ±
Deed F-781021

49750
2.15 Ac. ±
Deed F-782103

49745 Deed F-782324
3.11 Ac. ±

49746
0.22 Ac. ±
Deed F-782418

49747
2.66 Ac. ± Rt.
Deed F-782418

620+45.54 P.I.
N 70° 28' 32"
E 1731.595 ± 24

Hanel Lumber Co. Inc.
50-575
F-732333
F-780517

E. & L. Gehrig
67-292

2.15 Ac. ± Rt.
L.A. McClain
50-226
S. Bell (C.P.)
F-751574

Hanel Lumber Co. Inc.
F-780777

L.S. & K.M. Hanel
46-488

Private Airstrip

C.C. & E.A. Cutler
61-328
F-662162

L.S. & K.M. Hanel
F-720787

FD 2" I.P. WITH LEAD PLUG (3/85)
N 703,578.89 HELD COORDINATE
E 1,732,011.06
FROM 9B-2-11
DATED MAY 1967
REVISED SEPT. 1977

Hughes
3-113

FD 2" I.P. (1963)
N 701,038.28
E 1,731,983.01

N 703,000
E 1,732,000

N 704,000
E 1,731,000

615
615 ± 0.00

618 ± 50

622 ± 100

625

60

50

80

100

100

100

100

100

100

100

100

100

100

100

100

100

100

65

65

65

65

65

65

65

65

65

65

65

65

65

65

65

65

65

65

65

65

65

65

65

65

65

65

65

65

65

65

65

65

65

65

65

65

65

65

65

65

, W.M.

M.H. & D.J. Kruckenberg
63-34

Sho Endow
8-424
Sho Endow, Jr. et ux
F-701182

2° C.L.
TA = 12° 47' 30"
TS = 521.36'
2 - 400 Sp's
S = 4' 00"
a = 0.5

6° C.P.
TA = 39° 32' 30"
TS = 571.00'
2 - 450 Sp's
S = 13' 30"
a = 7.33

6° C.P.
TA = 50° 30' 30"
TS = 619.20'
2 - 450 Sp's
S = 15' 30"
a = 11.5

FD 2" I.P. WITH LEAD PLUG (3/85)
N. 703,578.88 HELD COORDINATE
E. 1,732,011.06
FROM 9B-2-11
DATED MAY 1967
REVISED SEPT. 1977

E.C. & E.A. Cutler
G1 - 328
F-662162

L.S. & K.M. Hanel (C.P.)
F-720787

L.S. & K.M. Hanel
F-700653

42267
4.2 Ac.±
Deed Film # 710300

42268
2.5 Ac.±
Deed Film # 710228

Lloyd A. Moss
28-406
12.5 Ac.± Lt.

MS. N 16° 55' 39" E
DEED N 16° 32' 07" E
2860.71
2919.95

LOT 16

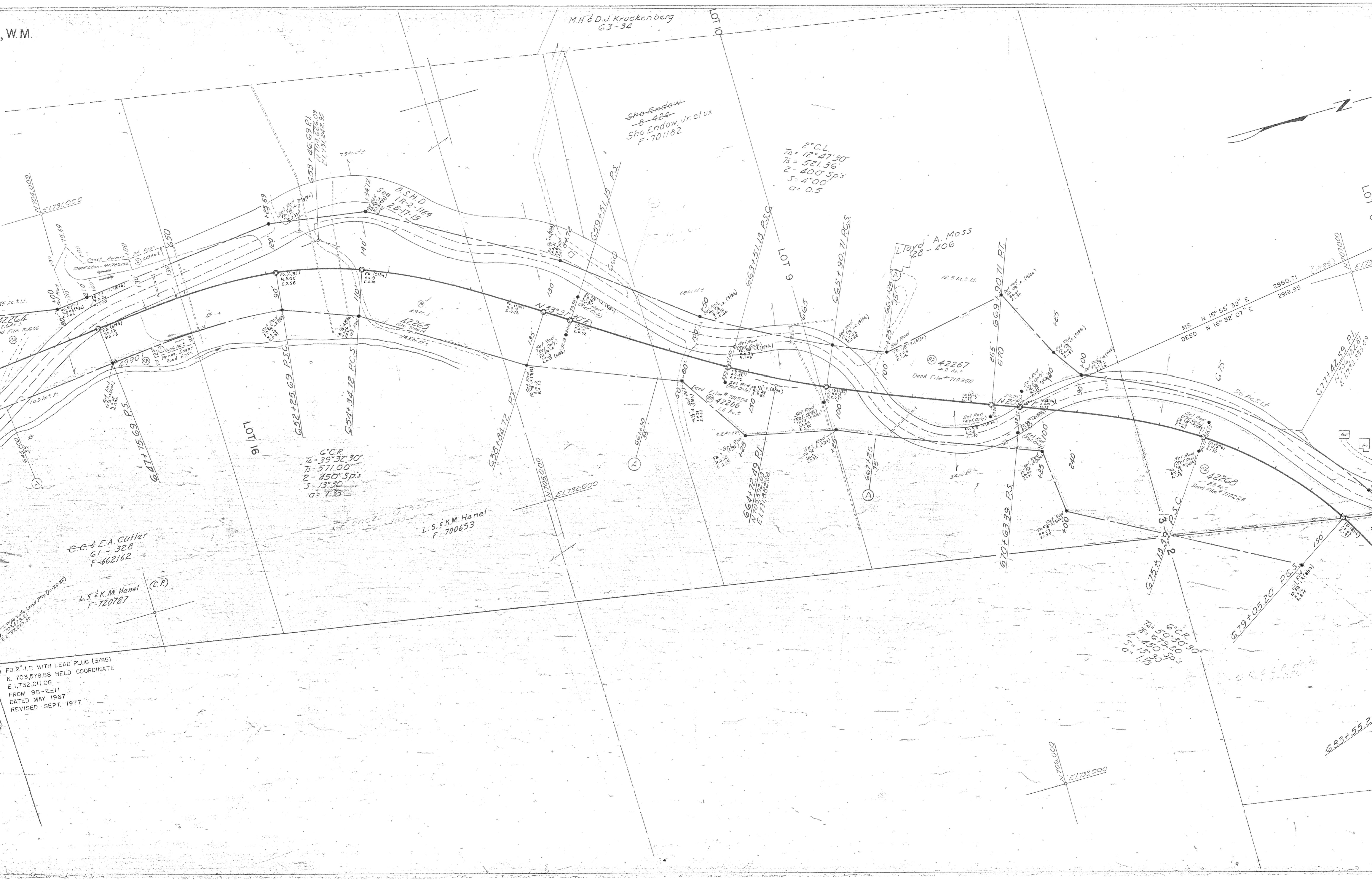
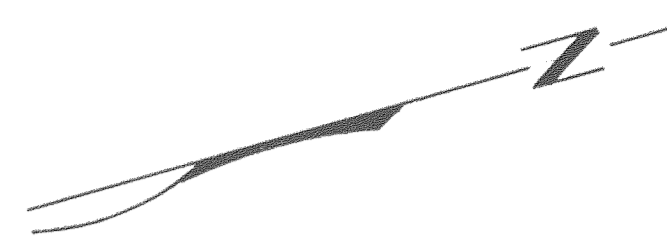
LOT 6

LOT 10

LOT 10

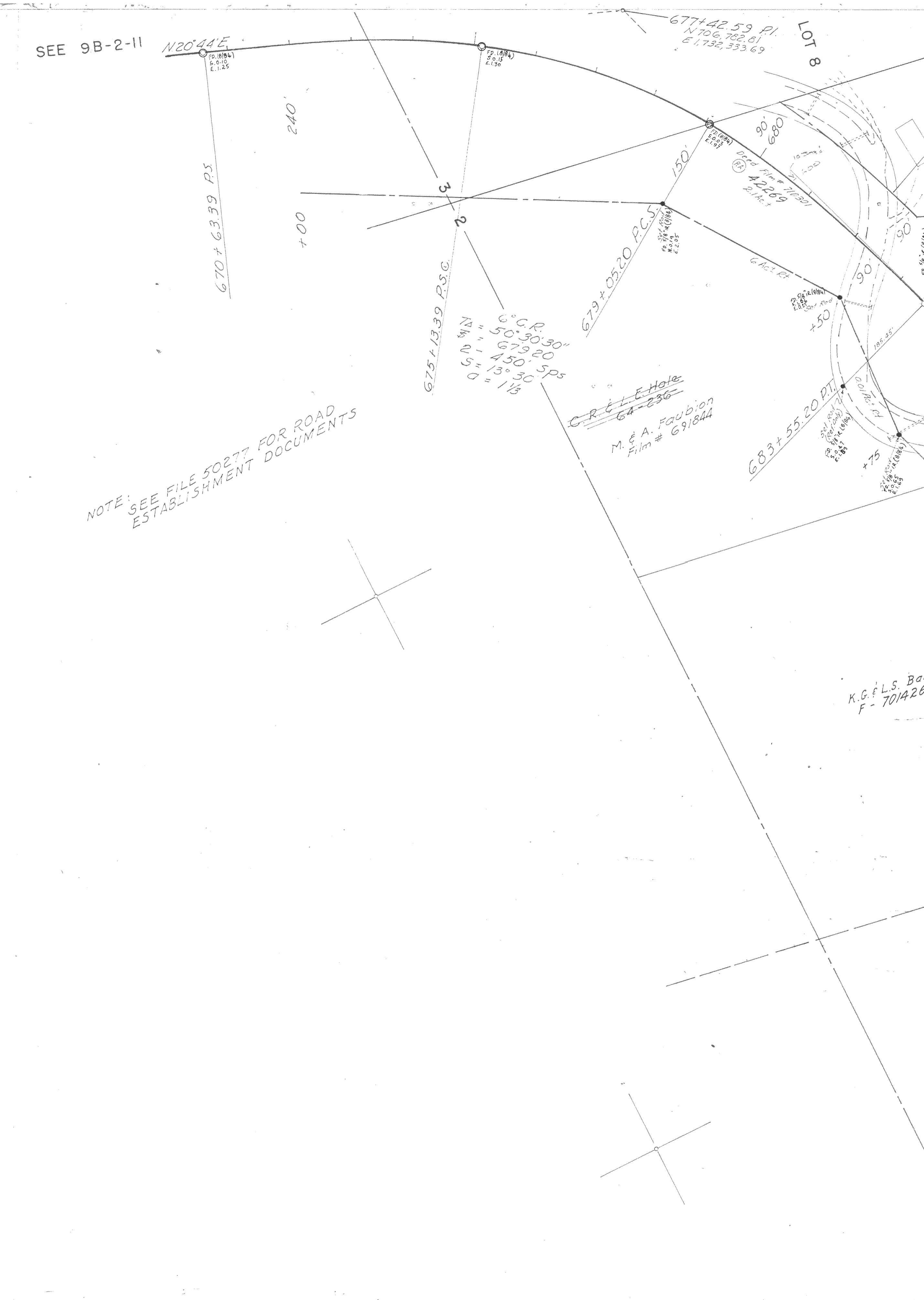
LOT 10

LOT 10





SEE 9B-2-II



12.59 P.I.
6,782.61
2,333.69

LOT 8

T.1N.,R.10E.W.M.
9B-2-12

T.2N.,R.10E.W.M.
9B-2-12

FD. 1 1/2" I.R. (3/85)
01' BELOW A/C IN
CENTRAL VALE RD.
N. 708,984.36
E. 1,732,926.17

Sec Cor Found
N 708,946.60
E 1,732,924.27

RE. E.A. Perkins
64-237

J.P. Hounsell
Mt. Hood Orchards (C.P.)
Scale 1"=800'
File: 42272

J.P. Hounsell
25-597
Mt. Hood Orchards, Inc. (C.P.)
LOT 4

2" C.I. 100'
1/4" = 1390.99'
2" = 400 Sp's
d = 0.5

J.P. Hounsell, et al
67-320
29-212
67-323
Mt. Hood Orchards, Inc. (C.P.)

H.J. & M. Hogen
25-673

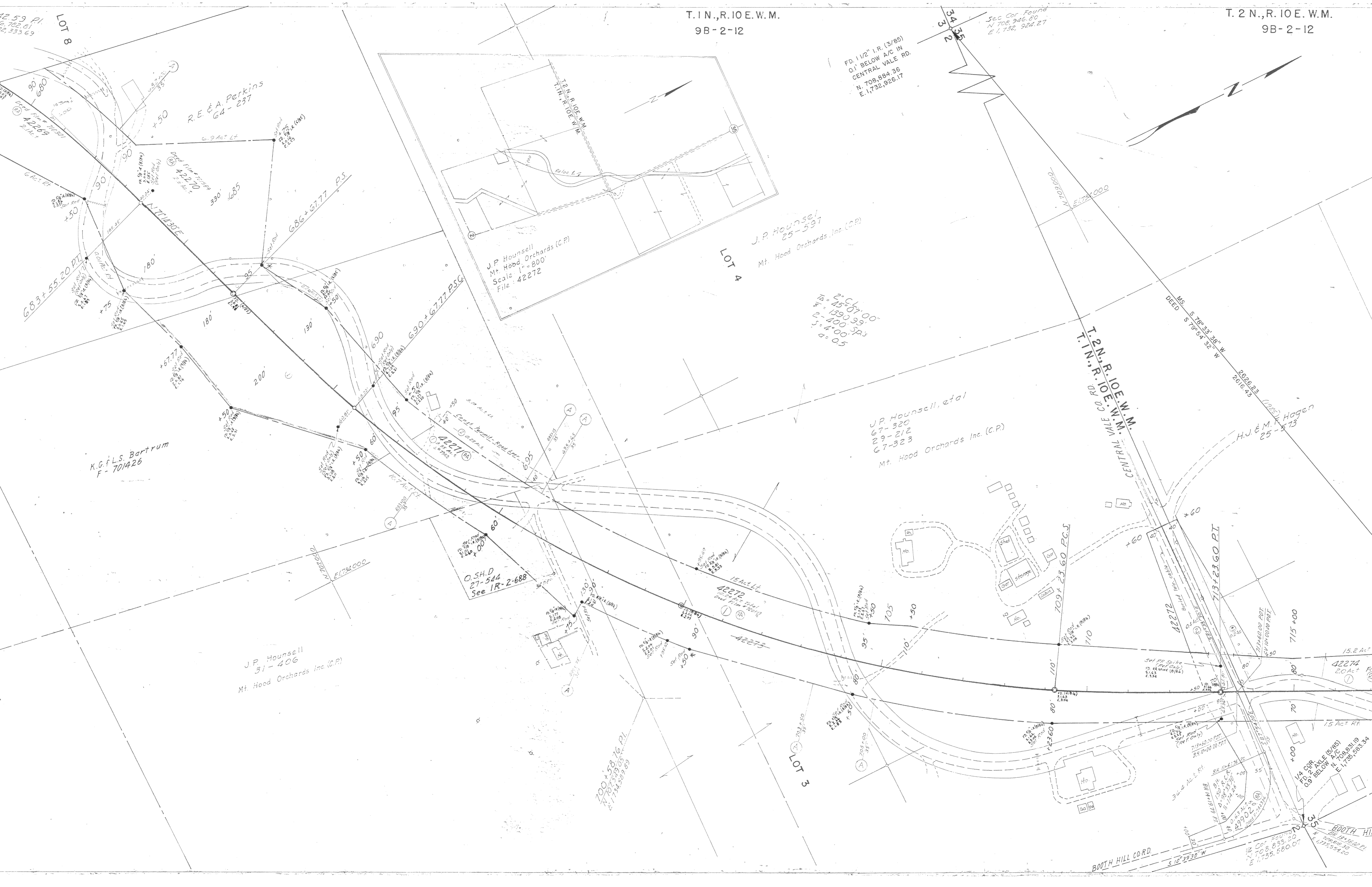
J.P. Hounsell
31-406
Mt. Hood Orchards, Inc. (C.P.)

O.S.H.D.
27-544
See IR-2-688

700+58.76 P.I.
N 707,370.07
E 1,734,289.80

LOT 3

BOOTH HILL
COR. 1/4 COR. AXLE (19/85)
0.9' BELOW A/C IN
N 708,833.20
E 1,735,554.20



2626.23
2616.43
H.J. & M. Hogen
25-573

ROY, T. Yosui
29-204

2° C.L.
T_A = 9° 00'
T_S = 425.62
L = 400' Sp.3
S = 4° 00'
a = 0.5

ROY, M. Snobel
64-182
64-419

GEHEO, T.
28-

J.R. Down
25-618 & 25-541
0.6 N. Fairchild
76-269

J.P. Hounsell, et al
67-316 & 24-138
67-318 & 29-370
Mt. Hood Orchards Inc. (C.P.)

J.R. & L.N. Down
45-541
22-82
49-323

J.P. Hounsell, et al
67-320 & 28-96
67-323
Mt. Hood Orchards Inc. (C.P.)

