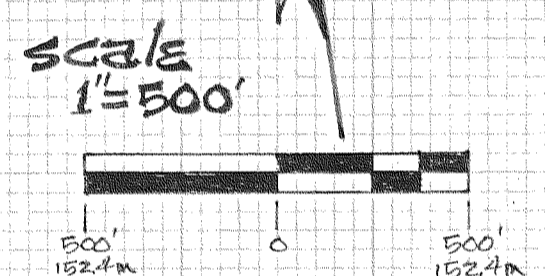
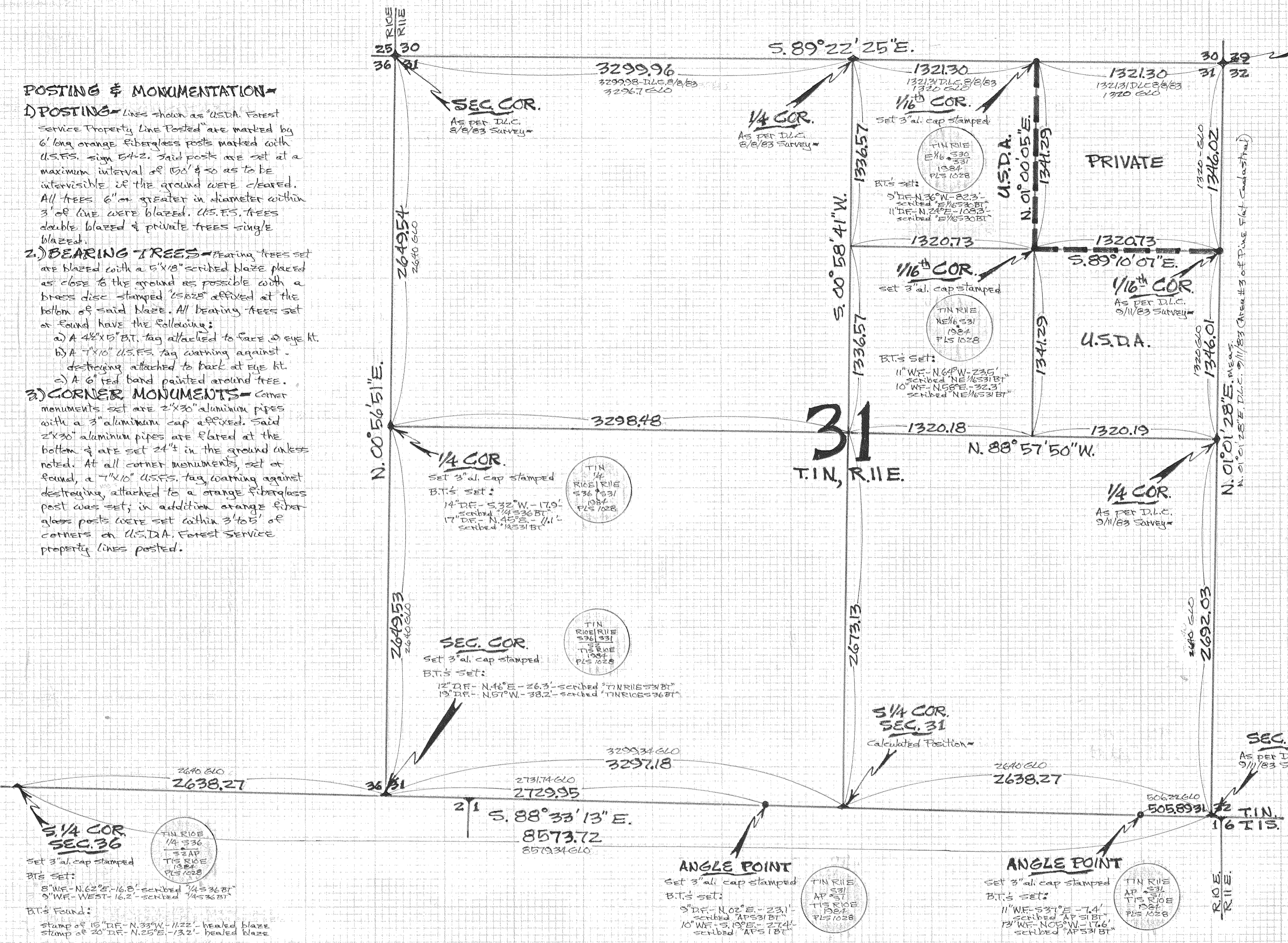
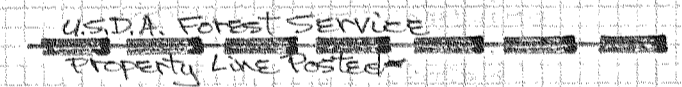


POSTING & MONUMENTATION

- 1.) POSTING** - Lines shown as "USDA Forest Service Property Line Posted" are marked by 6' long orange fiberglass posts marked with U.S.F.S. sign 84-2. Said posts are set at a maximum interval of 150' & so as to be intervisible if the ground were cleared. All trees 6" or greater in diameter within 3' of line were blazed. U.S.F.S. trees double blazed & private trees single blazed.
- 2.) BEARING TREES** - Bearing trees set are blazed with a 5"x8" scribed blaze placed as close to the ground as possible with a brass disc stamped "1825" affixed at the bottom of said blaze. All bearing trees set or found have the following:
 - A 4"x5" B.T. tag attached to face of eye kt.
 - A 7"x10" U.S.F.S. tag warning against destroying attached to back of eye kt.
 - A 6" red band painted around tree.
- 3.) CORNER MONUMENTS** - Corner monuments set are 2"x30" aluminum pipes with a 3" aluminum cap affixed. Said 2"x30" aluminum pipes are flared at the bottom & are set 2 1/2" in the ground unless noted. At all corner monuments, set or found, a 7"x10" U.S.F.S. tag warning against destroying attached to a orange fiberglass post was set; in addition orange fiberglass posts were set within 3/4 to 5' of corners on U.S.D.A. Forest Service property lines posted.



BASIS OF BEARING
AS PER D.L.C. 9/11/83
SURVEY - 9/11/83 SURVEY
Being Area #3 of Pine Flat
Cadastral for Forest Service



REGISTERED PROFESSIONAL LAND SURVEYOR
Danny L. Cron
OREGON
AUGUST 22, 1975
DANNY L. CRON
1028
Dec 12, 1984

"SURVEY"

FOR - U.S.D.A. Forest Service
LOCATION - Posted Lines
located in the N.E. 1/4 of Sec.
31, T.1N., R.11E., W.M.
**HOOD RIVER COUNTY,
OREGON**

D.L.C. Surveying
Danny Cron
6594 Trout Creek Rd.
Parkdale, Ore. 97041

FILED

JUL 12 1985
RICHARD ARNOLD
COUNTY SURVEYOR
Hood River, Oregon

85036

CERTIFICATION

I, Danny L. Cron, a registered land surveyor in the state of Oregon hereby certify that this plat & the notes hereon, or attached, are a correct representation of a survey I performed during the Fall of 1984 for the U.S.D.A. Forest Service in accordance with the statutes of the state of Oregon and with the articles of my contract, said being "Surveyors Ridge Cadastral", contract No. 53-0467-4-00935.

Danny L. Cron
Danny L. Cron - Registered Land Surveyor - Oregon license # 1028

NARRATIVE

The Willamette Base Line thru Ranges 10 & 11 East was originally surveyed in 1859 by David P. Thompson. In 1882 Henry Meldrum was surveying the exteriors of T.1N., R.11E., W.M. & found said Thompson's work thru R.11E. out of specifications, therefore he resurveyed the Base Line thru R.11E. As per B.L.M. remonumentation work performed in 1965 & 1968 along the Base Line thru R.11E., the 1859 Thompson corners act as angle points on the Base Line. The S. 1/4 corner of Sec. 31, T.1N., R.11E., W.M. was never set. Alonzo Gesner in 1879 surveyed the West boundary of T.1N., R.11E., W.M. Henry Meldrum in 1882 subdivided T.1N., R.11E., W.M. On Sept. 17, 1984 the U.S.D.A. Forest Service contracted the survey of several of their holdings within the Hood River Ranger District. This particular survey is of Area #2 of said contracted survey. All field angles were trained with a Wild T-1. All distances were measured with a H.P. 3805A. Minimum position closure required was 1:5000. Field notes are contained in D.L.C. Field Book 84-B.