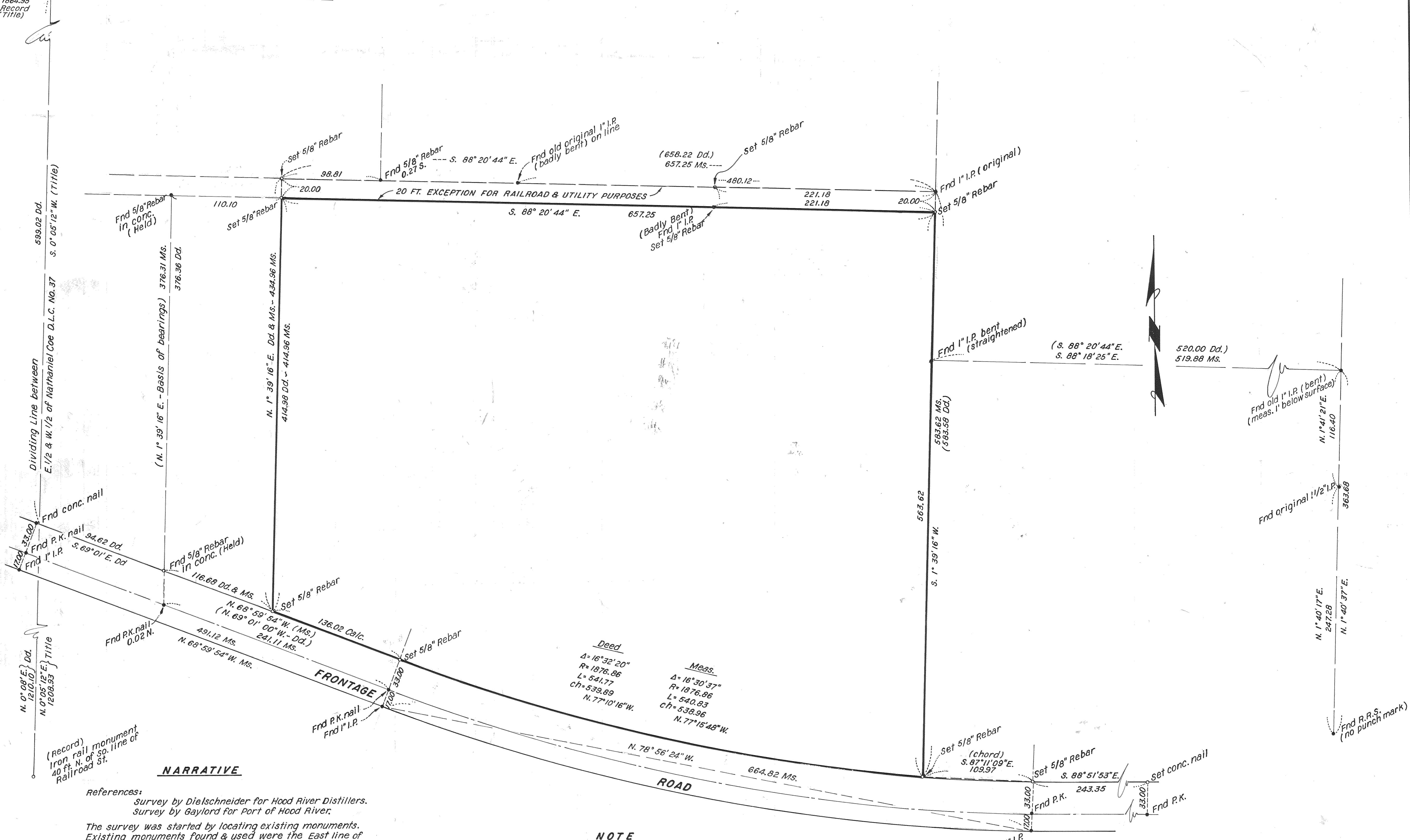


N.W. Cor. Nathaniel Coe D.L.C. No. 37
 1864.95 Record (Title)
 N. line of Nathaniel Coe D.L.C. No. 37



NARRATIVE

References:
 Survey by Dielschneider for Hood River Distillers.
 Survey by Gaylord for Port of Hood River.

The survey was started by locating existing monuments. Existing monuments found & used were the East line of that tract surveyed by Dielschneider for the Hood River Distillers both 5/8" Rebar set in concrete; the southwest corner of the Juco tract monumented with a 1" pipe; the southeast corner of that tract described in Film No. 690110, monumented with a 1" pipe; and the alignment of Frontage Road monumented as shown. The west line of the tract was established by measuring call distances along the south line of the Railroad easement and the north line of Frontage Road from those monuments established by Dielschneider in the course of his survey for Hood River Distillers. The north line of the tract was established by extending said west line northerly 20.00 feet to the northwest corner of the northeast corner of the original tract, a found 1" pipe established the north line. An additional 1" pipe badly bent, was found on the north line the location of which was taken approx. 1.5 feet below the ground surface. The east line of the tract was established by measuring the call angle from the northeast corner of the original tract to an intersection with the north line of Frontage Road as monumented, this line passed through a 1" pipe marking the southeast corner of that Parcel conveyed to Fibre Tech Film No. 690110. The northwest and southwest corners of this tract were also monumented with 1" pipes that were very badly bent and 5/8" Rebar with plastic caps were set at the proper location. The south line of the tract is the north R/W of Frontage Road accepted as monumented. All distances measured with a Wild D14 L Distomat and angles measured with a Wild T 2000. Bearing Basis - survey by Dielschneider for Hood River Distillers.

NOTE

1. Rebars set are 5/8" x 30" with marked "P.L.S. 994" plastic cap.

LEGEND

- P.K. = P.K. (Brand) nail
- I.P. = Iron Pipe
- conc. = concrete
- R.R.S. = Railroad Spike
- Dd. = Deed
- Ms. = Measured
- Fnd = Found

FILED

DEC 17 1984
 Richard A. ...
 COUNTY SURVEYOR

REGISTERED PROFESSIONAL LAND SURVEYOR
 LAWRENCE E. JONES
 9 9 4

~ BOUNDARY SURVEY ~
 of TAX LOTS 108, 117 & portion of TAX LOT 118
 Situated in Section 25, T. 3 N., R. 10 E., W. M.
 City of Hood River - Hood River County, Oregon

OWNER: JANTZEN INC. ~ Revised Nov. 6, 1984 ~

R.S. GREENLEAF (1885-1915) MARSHALL BROTHERS (1915-1957) BOOTH & WRIGHT (1957-1977) SETON, JOHNSON & ODELL (1977-1983) CHASE, JONES & ASSOCIATES, INC. (1983-)		CHASE, JONES & ASSOCIATES INC. 133 S. W. SECOND AVENUE PORTLAND, OREGON 97204 (503) 228-9844	
PROJECT NO. 6436	1/4 SECTION	DATE Oct. 1, 1984	
DRAWN BY Al Sal	CHECKED BY E. Jones	SCALE 1"=50'	