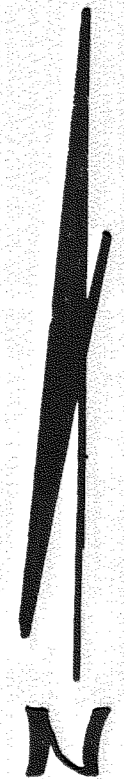
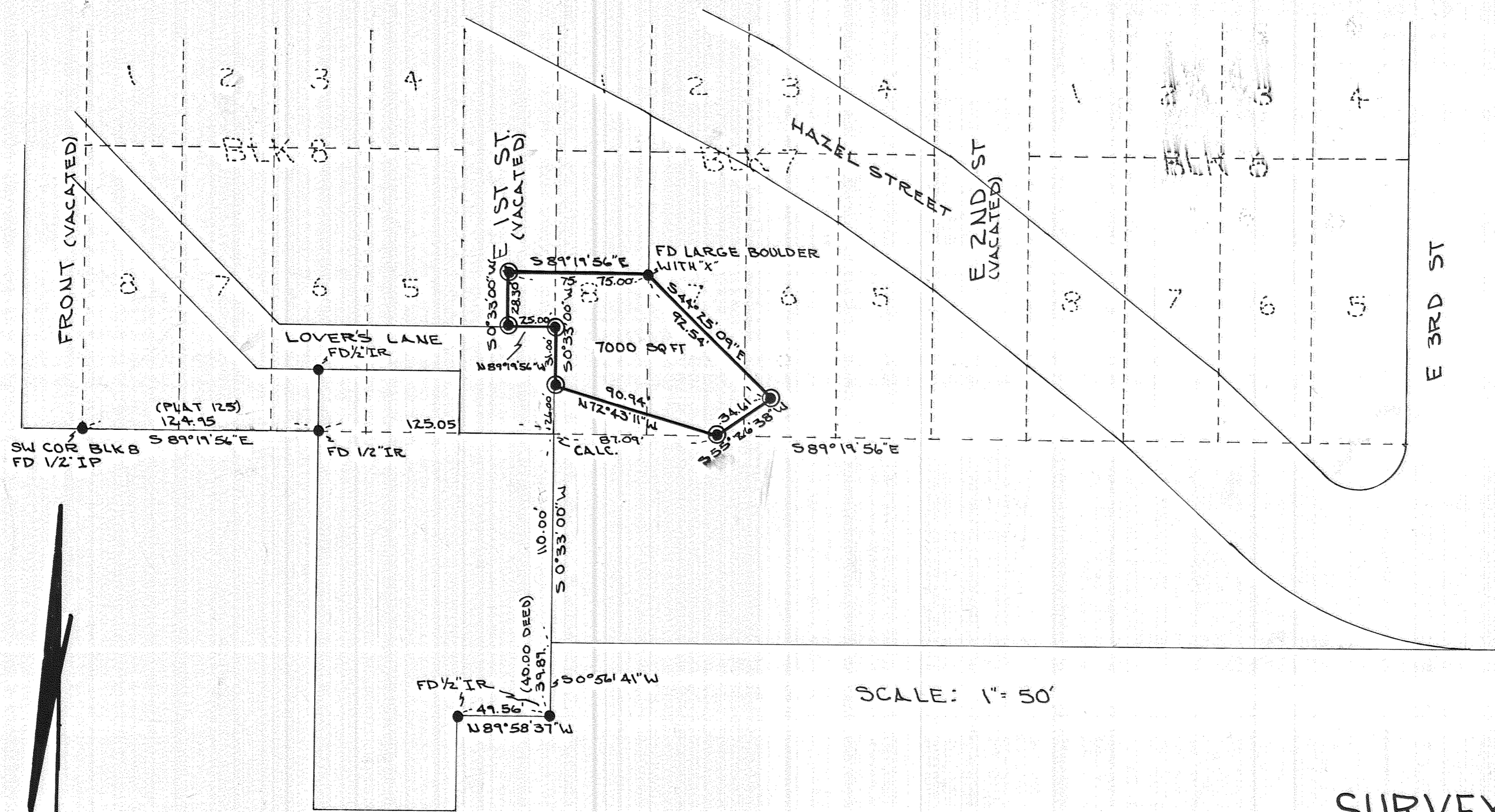


SURVEY IN LOTS 6, 7, 8, BLK 7  
 WINAN'S ADDITION  
 NE 1/4, SEC. 36, T3N, R10E, WM  
 CITY OF HOOD RIVER, STATE OF OREGON



BASIS OF BEARING  
 SOUTH LINE BLOCK 8 AS  
 ESTABLISHED BY DLC  
 SURVEYING C.S. # 78008

LEGEND

- FOUND MONUMENT AS NOTED
- ⊙ SET 5/8" X 30" IR./PLAS. CAP. UNLESS NOTED
- ORIGINAL PLAT LINES

REFERENCE SURVEYS  
 DLC SURVEYING C.S. NO'S 77014, 77115, 78008, 78019

SCALE: 1" = 50'

SURVEY FOR  
 ALLEN BELL

FILED

OCT 31 1984

*Richard J. Arnold*  
 COUNTY SURVEYOR

DEPUTY

REGISTERED  
 PROFESSIONAL  
 LAND SURVEYOR

*Anthony C. Klein*

OREGON  
 JULY 17, 1970  
 ANTHONY C. KLEIN  
 932

**Klein & Assoc.**

LAND SURVEYING  
 1020 TUCKER RD.  
 HOOD RIVER, ORE. 97031  
 (503) 386-3321 OR 386-3322

OCT 22, 1984  
 DRWN. BY ACK  
 SURVEY BY ACK, JPR.

# 84072