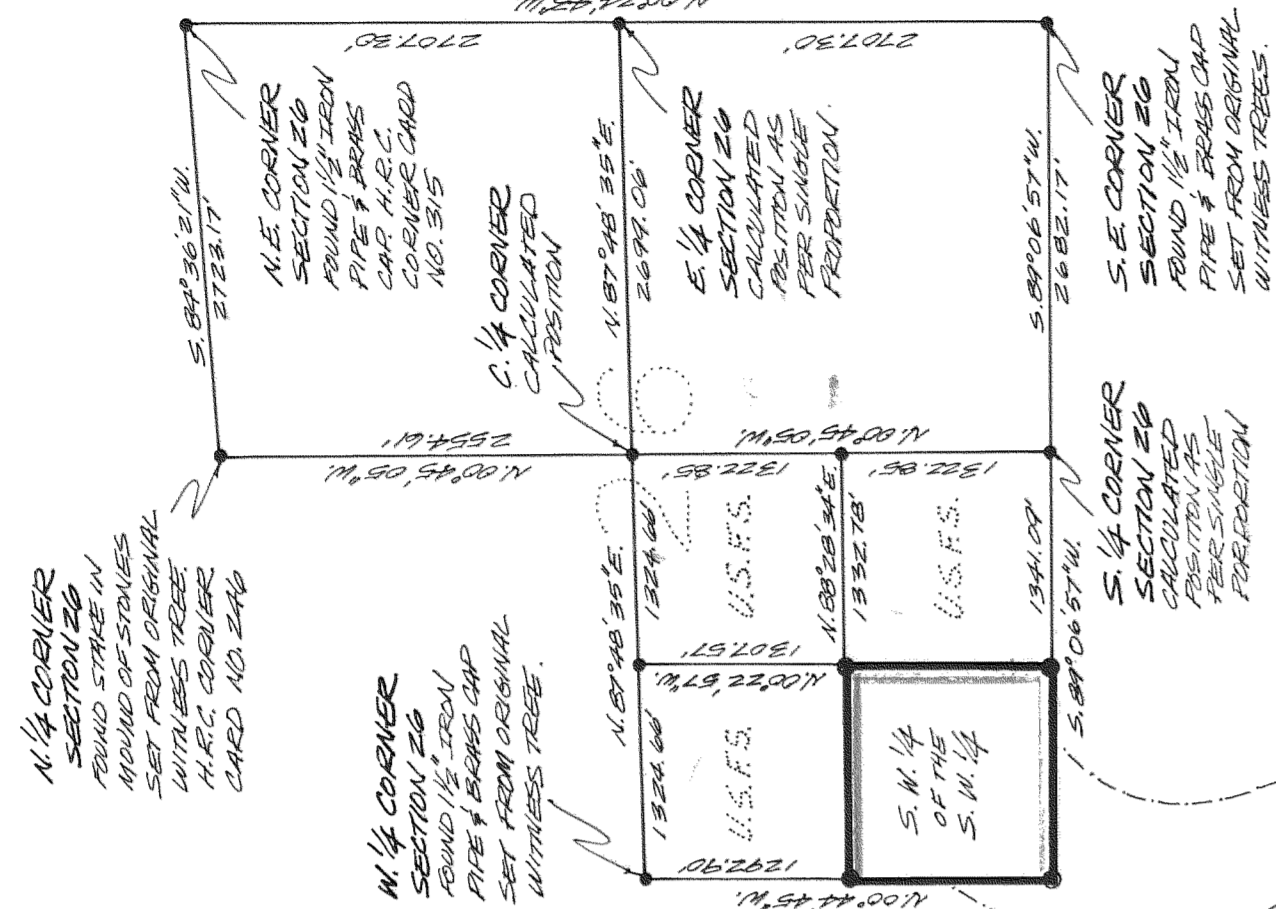


N.E. CORNER SECTION 27  
 SET 1/2" IRON PIPE FROM CAP FROM ORIGINAL WITNESS TREE. FOUND 1/2" IRON PIPE. H.C.C. CORNER CARD NO. 925

1/8" CORNER SECTION 27  
 SET 1/2" IRON PIPE FROM CAP FROM ORIGINAL WITNESS TREE. FOUND 1/2" IRON PIPE. H.C.C. CORNER CARD NO. 925

N. 1/4 CORNER SECTION 27  
 SET 1/2" IRON PIPE FROM CAP FROM ORIGINAL WITNESS TREE. FOUND 1/2" IRON PIPE. H.C.C. CORNER CARD NO. 925

SECTION 26 BEAR-DOWN  
 SCALE 1" = 1200'



N. 1/4 CORNER SECTION 26  
 SET 1/2" IRON PIPE FROM CAP FROM ORIGINAL WITNESS TREE. FOUND 1/2" IRON PIPE. H.C.C. CORNER CARD NO. 925

N. 1/4 CORNER SECTION 26  
 SET 1/2" IRON PIPE FROM CAP FROM ORIGINAL WITNESS TREE. FOUND 1/2" IRON PIPE. H.C.C. CORNER CARD NO. 925

S. 1/4 CORNER SECTION 26  
 SET 1/2" IRON PIPE FROM CAP FROM ORIGINAL WITNESS TREE. FOUND 1/2" IRON PIPE. H.C.C. CORNER CARD NO. 925

1/8" CORNER SECTION 26  
 SET 1/2" IRON PIPE FROM CAP FROM ORIGINAL WITNESS TREE. FOUND 1/2" IRON PIPE. H.C.C. CORNER CARD NO. 925

1/8" CORNER SECTION 26  
 SET 1/2" IRON PIPE FROM CAP FROM ORIGINAL WITNESS TREE. FOUND 1/2" IRON PIPE. H.C.C. CORNER CARD NO. 925

SECTION CORNER SECTION 26  
 SET 1/2" IRON PIPE FROM CAP FROM ORIGINAL WITNESS TREE. FOUND 1/2" IRON PIPE. H.C.C. CORNER CARD NO. 925

SECTION CORNER SECTION 26  
 SET 1/2" IRON PIPE FROM CAP FROM ORIGINAL WITNESS TREE. FOUND 1/2" IRON PIPE. H.C.C. CORNER CARD NO. 925

SCALE 1" = 400'  
 BASIS OF BEARINGS - OBSERVATION STATE PLANE COORDINATES  
 GRID FACTOR = 0.99820

LEGEND

- = LINE BLAZED & POSTED
- ☉ = WITNESS TREE TAGGED WITH U.S.F.S. SURVIVAL STRIPS

FILED  
 DATE 10-9-84  
 Richard G. Arnold  
 COUNTY SURVEYOR  
 BPO 54  
 TARRANT COUNTY, TEXAS  
 10-9-84  
 DATE OF SURVEY

REGISTERED PROFESSIONAL LAND SURVEYOR  
 Richard G. Arnold  
 OREGON  
 JULY 1980  
 RICHARD G. ARNOLD  
 0038

# SURVEY

HOOD RIVER COUNTY "BAD BUTTE"

SECTIONS 26, 27 & 34  
 T. 1 N., R. 10 E., M. 11 N.



DRAWN BY: J. H. BERRY