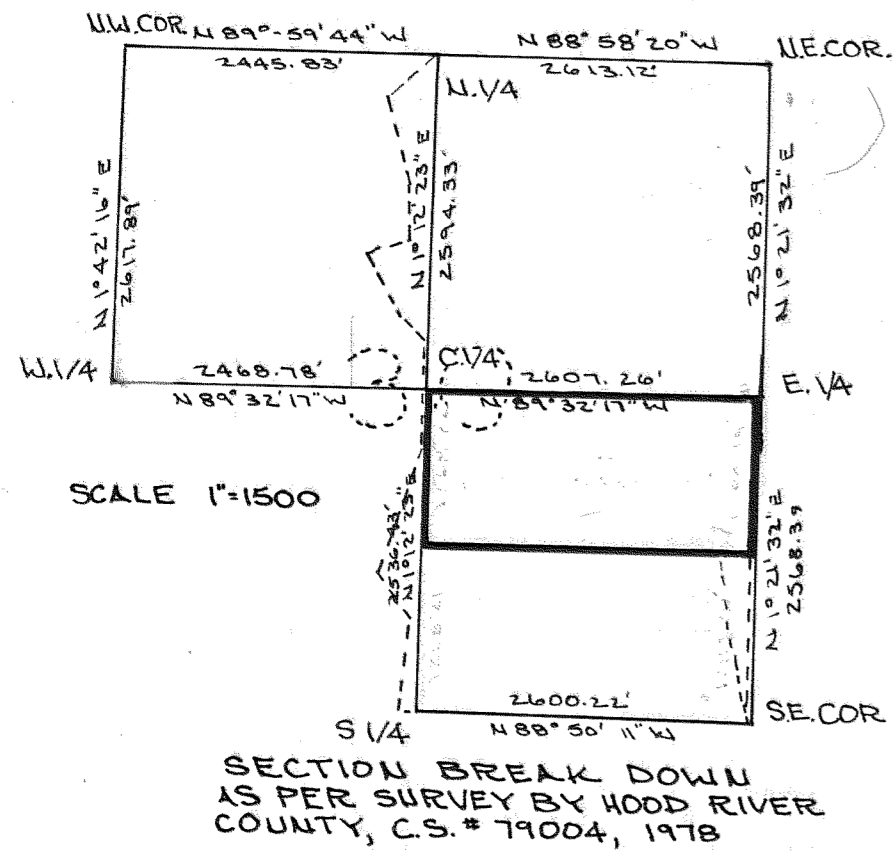


SURVEY IN THE SW 1/4, SEC. 30, T1S, R10E, W.M. COUNTY OF HOOD RIVER STATE OF OREGON

RESUME

WORK WAS STARTED IN JULY 1984. ALL SURVEYS DONE IN THE AREA WERE OBTAINED FROM THE COUNTY SURVEYORS OFFICE. HOOD RIVER COUNTY DID A SECTION BREAK DOWN IN 1978 (C.S. #79004) AND RAN A TRAVERSE BETWEEN THE SOUTH 1/4 AND THE N1/4 IN THE SUMMER OF 1984. THIS SURVEY WAS USED AS THE BASIS OF THE FURTHER BREAKDOWN IN THE SOUTHWEST 1/4. THE CENTER 1/4, SOUTH 1/4, EAST 1/4, AND SOUTHWEST CORNER WERE FOUND AND HELD, ALSO THE NORTH 1/4 AND SOUTHWEST DIFFERENCES IN BEARING; DISTANCES ARE SHOWN HEREIN. THE SUBDIVISION OF THE SOUTHWEST 1/4 WAS BASED ON THE EXISTING POSITION OF THE MONUMENTS FOUND AND HELD. TENNESON ENGINEERING CORP SURVEY IN THE SOUTHWEST 1/4 DID NOT AGREE WITH THE HOOD RIVER COUNTY SURVEY AND MONUMENTS ALONG THE SOUTH BOUNDARY OF THE PARCEL WERE RESET.



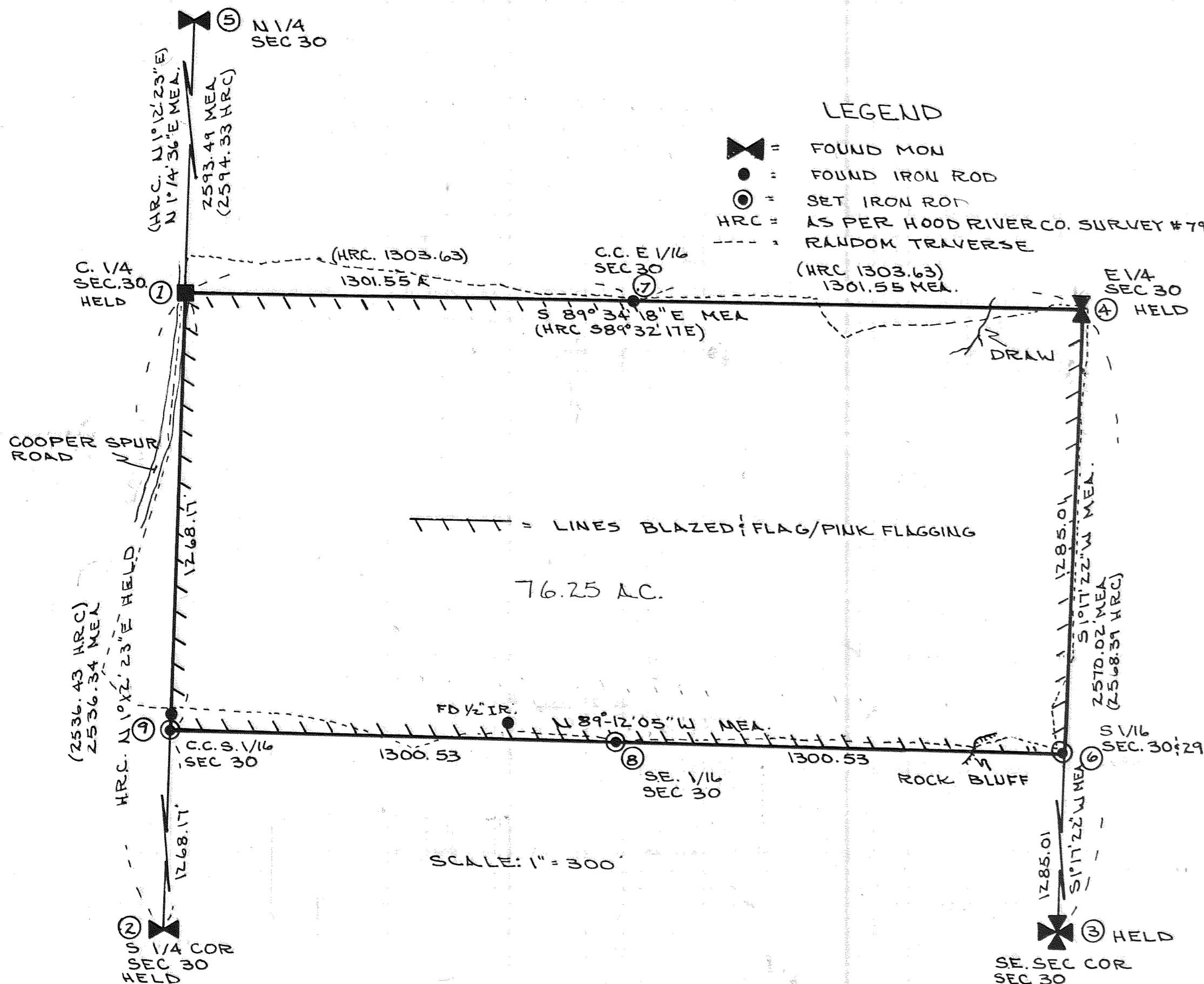
N
BASIS OF BEARING
WEST LINE OF THE SW 1/4
AS PER HOOD RIVER COUNTY
SURVEY NO. 79004

CORNER INFORMATION

1. FOUND 5/8 INCH IRON ROD, 3 INCHES BELOW THE PAVEMENT IN COOPER SPUR ROAD.
2. FOUND 1 1/2" IRON PIPE AS PER RECORD
3. FOUND 2 INCH IRON PIPE WITH BRASS CAP AND 4 BT'S AS PER RECORD.
4. FOUND 2 INCH IRON PIPE WITH BRASS CAP AND 2 BT'S AS PER RECORD. ALSO FOUND 1 INCH IRON PIPE WITH LEAD CAP 20 INCHES ABOVE THE GROUND N 79°34'E 17.00 FT. FROM BRASS CAP.
5. FOUND IRON PIPE AS PER RECORD.
6. SET 5/8 INCH IRON ROD WITH PLASTIC CAP MARKED L.S. 932. ALSO SET 2 BT'S BLAZED, POSTED, AND SCRIBED 1/16. A 31 INCH PINE BEARS N 18°W 17.9 FT. AND A 18 INCH PINE BEARS S 26°E 18.0 FT.
7. FOUND 5/8" INCH IRON ROD WITH BLAZED CHINKAPIN CLOSE BY, WHICH BEARS S 56°44'E FROM CALCULATED POSITION.
8. SET 5/8 INCH IRON ROD WITH PLASTIC CAP MARKED L.S. 932. ALSO SET 2 BT'S BLAZED, POSTED, AND SCRIBED 1/16. A 13 INCH PINE BEARS N 40°E 13.2 FT. AND A 19 INCH DOUG FIR BEARS S 40°W 18.1 FT. SET FOR TENNESON ENGINEERING CORP FOUND 1/2" INCH IRON ROD N 79°45'W 316.19 FT OF CORNER
9. SET 5/8 INCH IRON ROD WITH PLASTIC CAP MARKED L.S. 932. ALSO SET 2 BT'S BLAZED, POSTED, AND SCRIBED 1/16. A 4 INCH DOUG FIR BEARS N 60°E 11.2 FT AND A 15 INCH DOUG FIR BEARS S 7°E 15.4 FT. FD 5/8 INCH IRON ROD N 6°14'E 57.41 FT.

LEGEND

- ⊠ = FOUND MON
- = FOUND IRON ROD
- ⊙ = SET IRON ROD
- HRC = AS PER HOOD RIVER CO. SURVEY #79004
- = RANDOM TRAVERSE



SURVEY FOR CHAMPION REALTY CORP.

FILED

AUG 17 1984

Richard A. Smith
COUNTY SURVEYOR

DEPUTY

REGISTERED
PROFESSIONAL
LAND SURVEYOR

Anthony C. Klein
OREGON
JULY 17, 1970
COUNTY SURVEYOR
ANTHONY C. KLEIN
932

Klein & Assoc.
LAND SURVEYING,
1020 TUCKER RD.
HOOD RIVER, ORE.
97031
(503) 384-3521

SURVEY BY : ACK; JPR
DRAWING BY : ACK
DATE : AUG 15, 1984
JOB NO. : 84027

84053