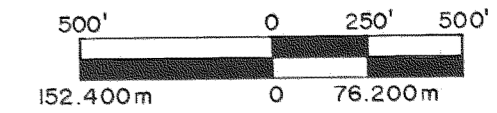


SURVEY OF SECTION 7, T. 1 N., R. 11 E., W. M. HOOD RIVER COUNTY, OREGON

FOR
CHAMPION INTERNATIONAL CORP.
MARCH 1984



LEGEND

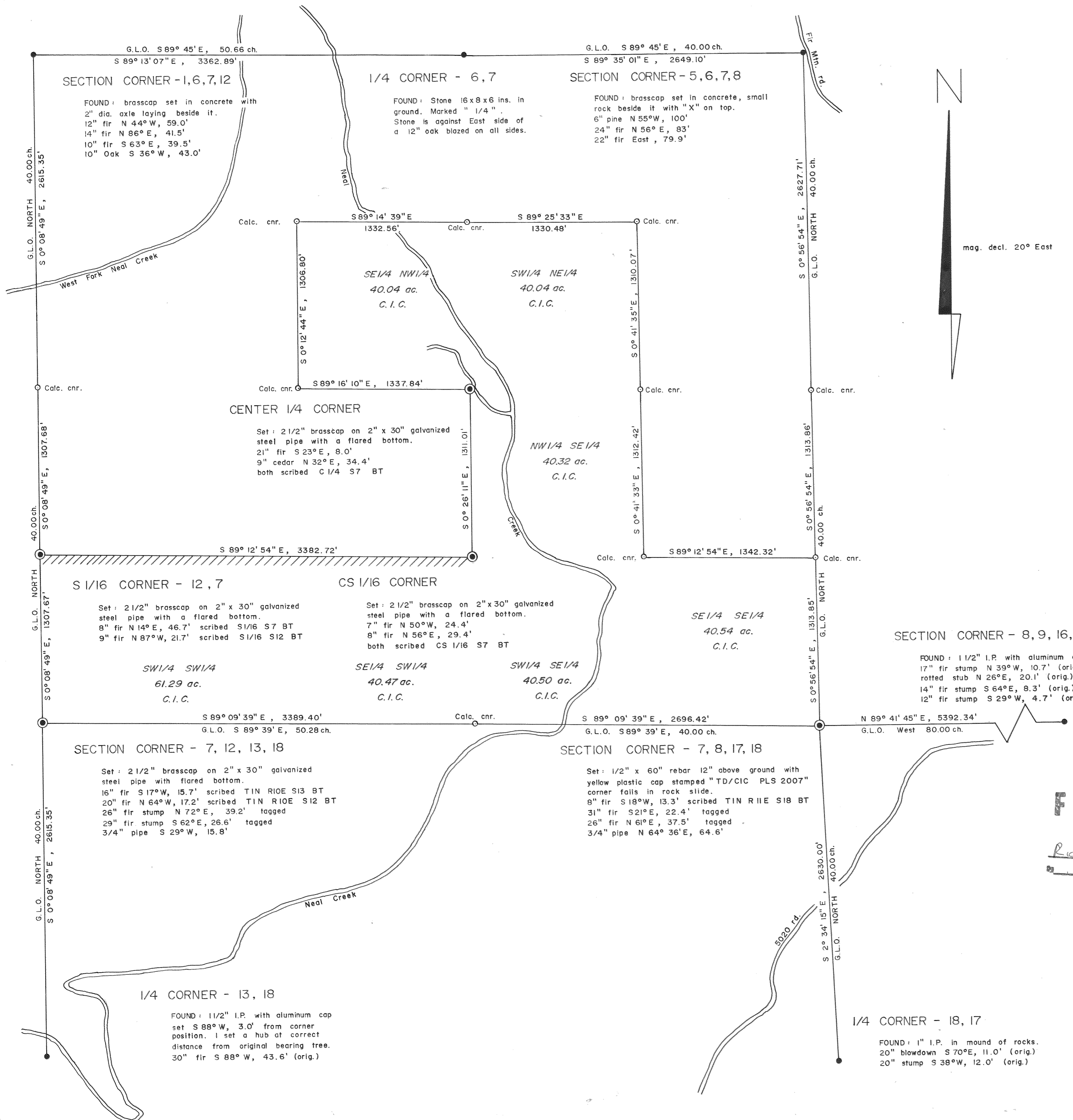
- Corner of record determined valid and used for control.
- Corner calculated but not set.
- ⊙ Corner set this survey.
- ▨ Property line marked with pink ribbon and orange painted blazes.

NARRATIVE

The township was originally subdivided by Henry Meldrum in 1882 under G.L.O. contract number 436. In 1970, J.S. Dielschneider monumented the east 1/4 corner of section 18 from original evidence. This was accepted. In 1978 & 1980, the Hood River County Surveyor monumented the NE & NW corners of section 7 and the NE corner of section 17. These positions were accepted. He also monumented the W 1/4 corner of section 18 from an original bearing tree. I determined that this monument was out of position and so used my position for all calculations. Monuments were also found at the SW, S1/4, SE, & E1/4 corners of section 7 and the N1/4 corner of section 17, but these monuments were invalidated. This survey was performed with a Jena O20A theodolite and a Mac II H E.D.M. I first calculated the SW corner of section 7 by single proportion and then the SE corner of section 7 by double proportion. Section 7 was then subdivided according to the B.L.M. "Manual of Surveying Instructions" 1973 edition. The basis of bearing was by solar observation.

FILED
MAR 13 1984
Richard D. Arnold
COUNTY SURVEYOR
DEPLRW

**REGISTERED
PROFESSIONAL
LAND SURVEYOR**
Dan J. Nevin
OREGON
JULY 16, 1982
DAN J. NEVIN
2007



84010