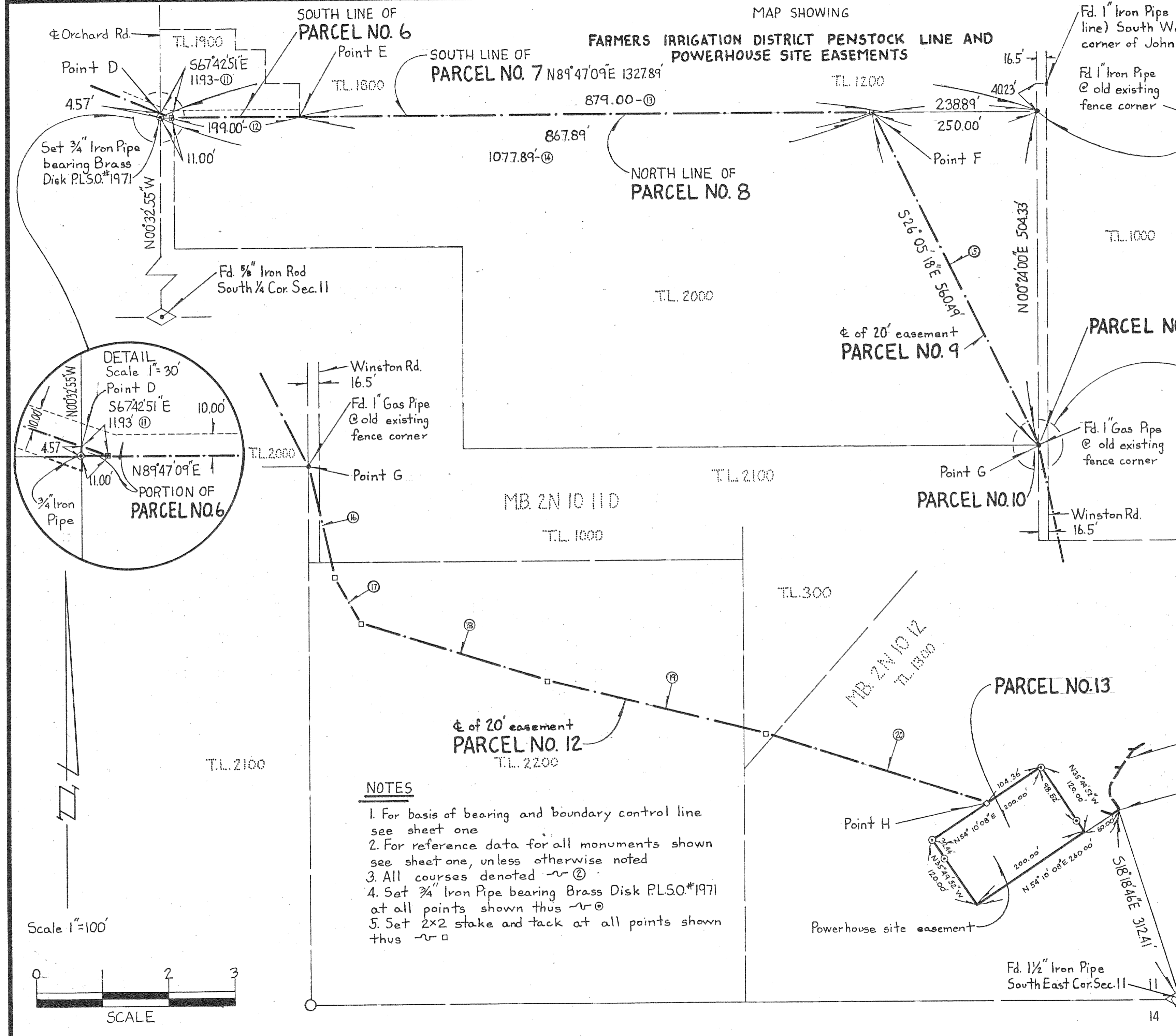
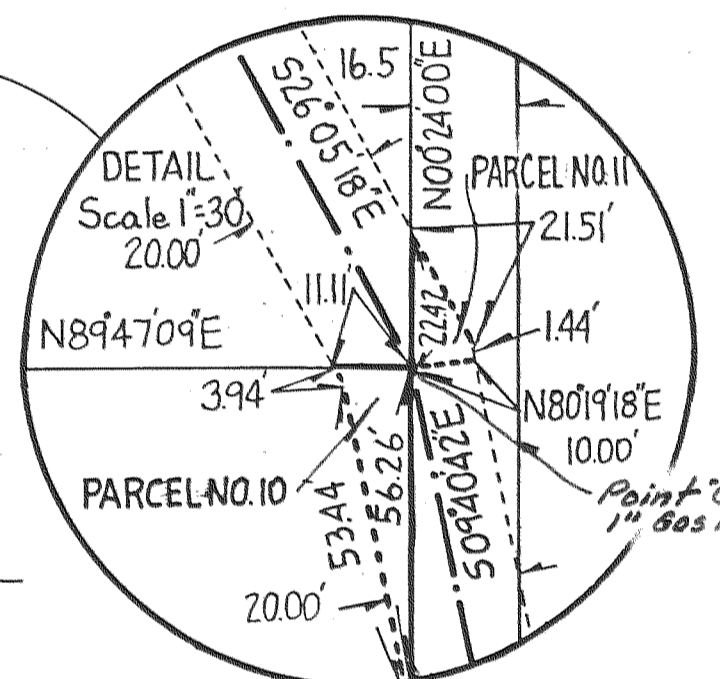
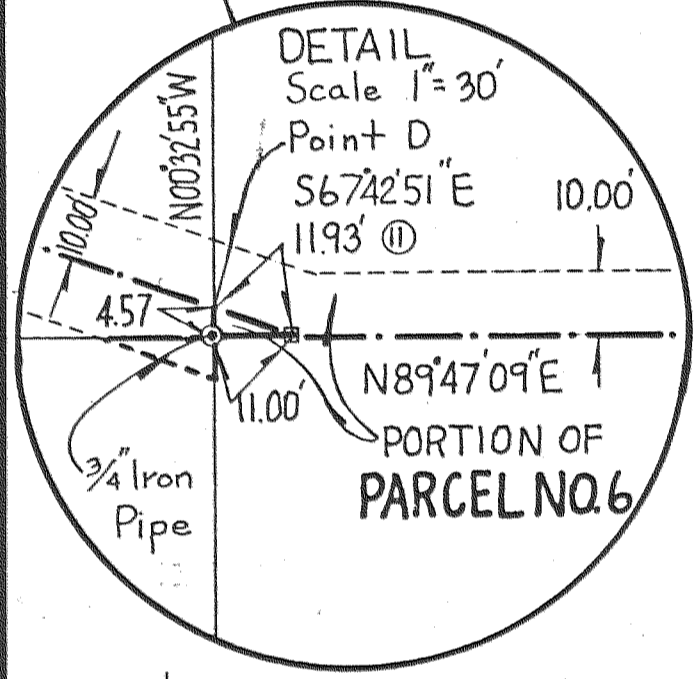


MAP SHOWING

FARMERS IRRIGATION DISTRICT PENSTOCK LINE AND POWERHOUSE SITE EASEMENTS

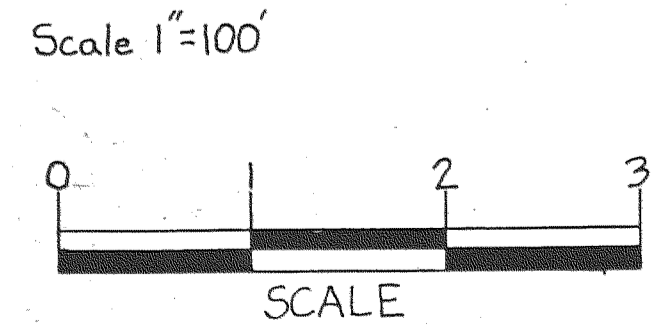


COURSE NUMBER	BEARING	DISTANCE
ⓐ	S67°42'51"E	11.93
ⓑ	N89°47'09"E	199.00'
ⓒ	N89°47'09"E	879.00'
ⓓ	N89°47'09"E	1077.89'
ⓔ	S26°05'18"E	560.49'
ⓕ	S09°40'42"E	170.35'
ⓖ	S29°57'02"E	79.76'
ⓗ	S73°34'04"E	296.42'
ⓓ	S78°36'49"E	347.57'
ⓔ	S74°01'02"E	350.91'



NOTES

1. For basis of bearing and boundary control line see sheet one
2. For reference data for all monuments shown see sheet one, unless otherwise noted
3. All courses denoted ~ⓐ
4. Set 3/4" Iron Pipe bearing Brass Disk PLSO.#1971 at all points shown thus ~ⓐ
5. Set 2x2 stake and tack at all points shown thus ~□



FILED
 FEB 2 1984
 Richard J. Ansdal
 COUNTY SURVEYOR
 DEPUTY

REGISTERED
 PROFESSIONAL
 LAND SURVEYOR
 OREGON
 JANUARY 19, 1982
 WILLIAM J. FROST
 1971



Frost's Land, Surveying & Cattle Company

5985 HIGHWAY 35, • MT. HOOD, OREGON 97041

(503) 352-6988
 SHEET 3 OF 3 SHEETS