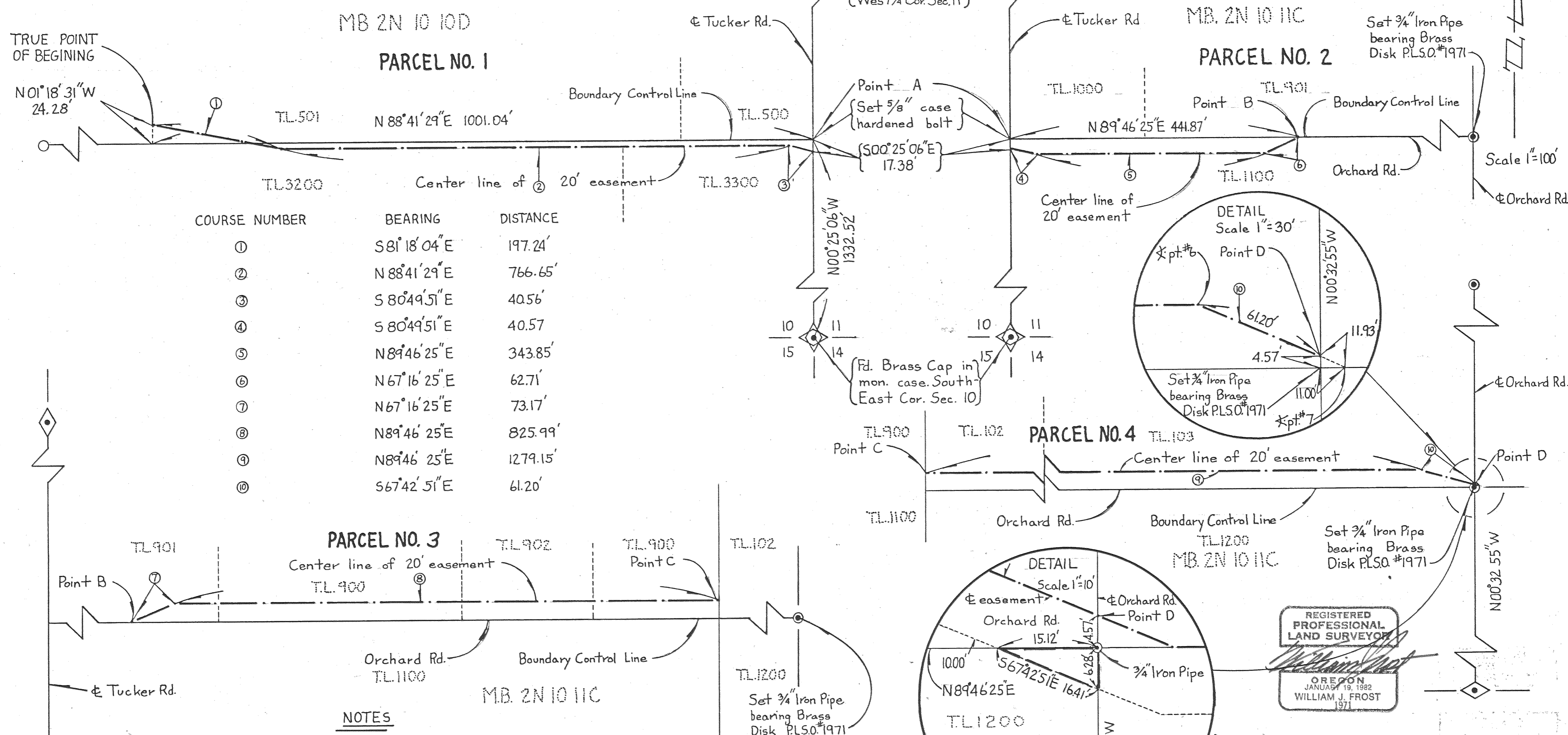
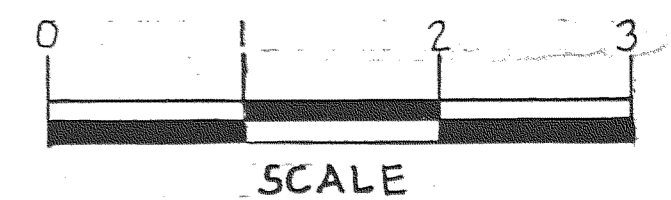


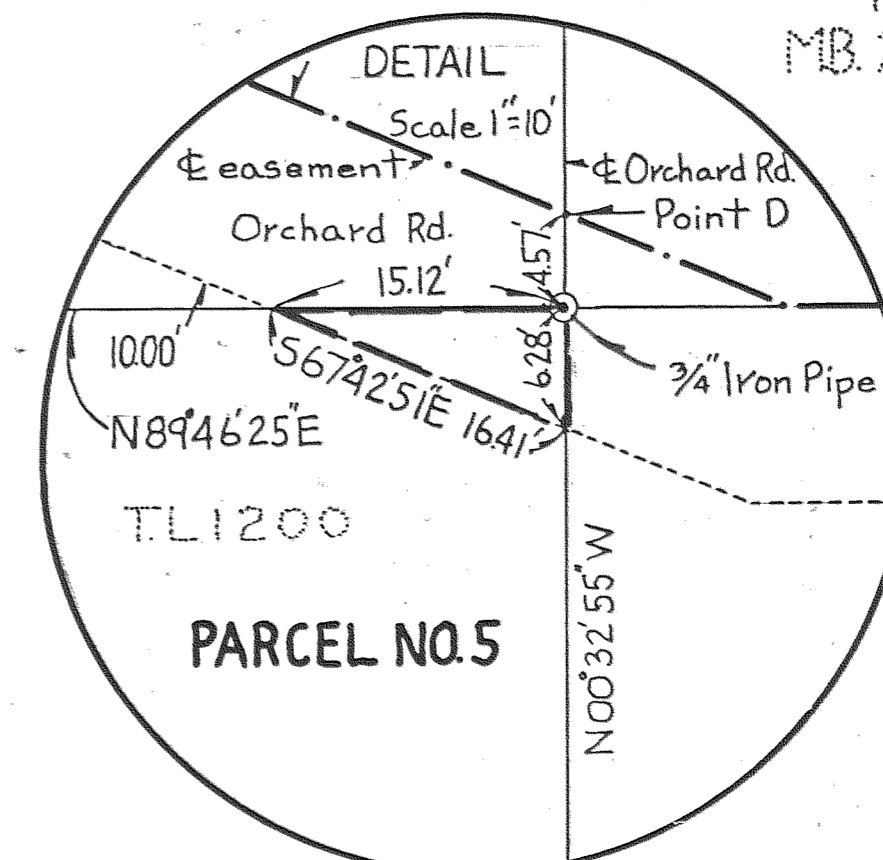
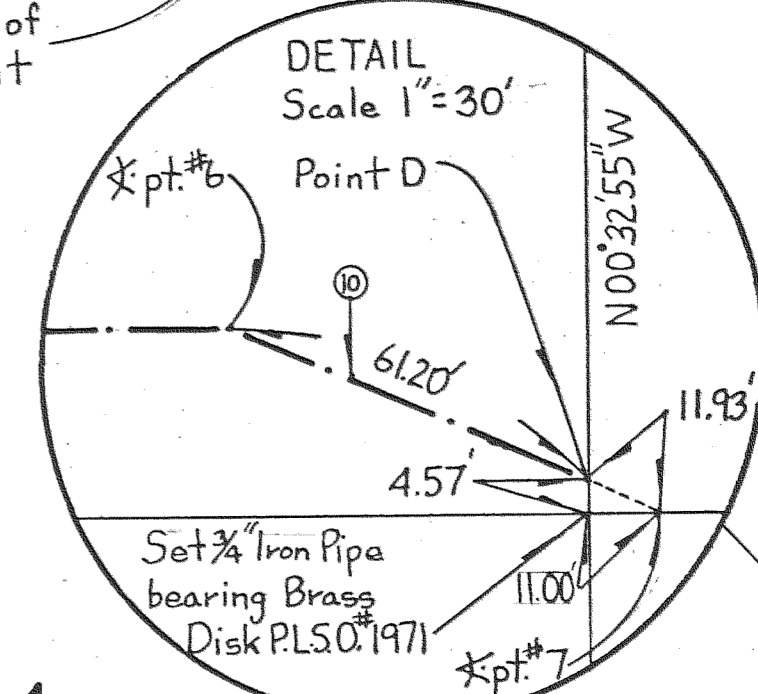
MAP SHOWING
**FARMERS IRRIGATION DISTRICT PENSTOCK LINE AND
 POWERHOUSE SITE EASEMENTS**



COURSE NUMBER	BEARING	DISTANCE
①	S 81° 18' 04" E	197.24'
②	N 88° 41' 29" E	766.65'
③	S 80° 49' 51" E	40.56'
④	S 80° 49' 51" E	40.57'
⑤	N 89° 46' 25" E	343.85'
⑥	N 67° 16' 25" E	62.71'
⑦	N 67° 16' 25" E	73.17'
⑧	N 89° 46' 25" E	825.99'
⑨	N 89° 46' 25" E	1279.15'
⑩	S 67° 42' 51" E	61.20'

NOTES

1. For basis of bearing and boundary control line see sheet one
2. For reference data for all monuments shown see sheet one, unless otherwise noted
3. All courses denoted ~ ②



REGISTERED
 PROFESSIONAL
 LAND SURVEYOR
William J. Frost
 OREGON
 JANUARY 19, 1982
 WILLIAM J. FROST
 1971



Frost's Land, Surveying & Cattle Company

5985 HIGHWAY 35, • MT. HOOD, OREGON 97041

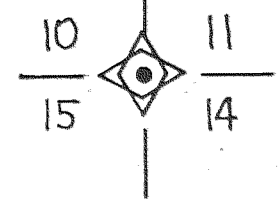
(503) 352-6988

SHEET 2 OF 3 SHEETS

FILED

FEB 2 1984

Richard J. Arnold
 COUNTY SURVEYOR
 DEPUTY



89001