

83079

N.W. CORNER SECTION 32
FOUND 2" GAS PIPE
SET IN 1921 BY
CRUICKSHANK
FROM ORIGINAL
WITNESS TREES.

N. 1/4 CORNER SECTION 32
FOUND 1/2" IRON PIPE & BRASS CAP AS SET FROM ORIGINAL WITNESS TREE.

E. 1/4 CORNER SECTION 29
FOUND 1/2" IRON PIPE & BRASS CAP AS SET FROM ORIGINAL WITNESS TREE.

N. 1/4 CORNER SECTION 33
FOUND 1/2" IRON PIPE & BRASS CAP AS SET FROM ORIGINAL WITNESS TREE.

N.E. CORNER SECTION 32
SET 1/2" IRON PIPE & BRASS CAP AS PER DOUBLE PROPORTION A.R.C. CORNER CARD NO. 330

W. 1/4 CORNER SECTION 32
CALCULATED POSITION AS PER SINGLE PROPORTION.

1/10 CORNER CALCULATED POSITION

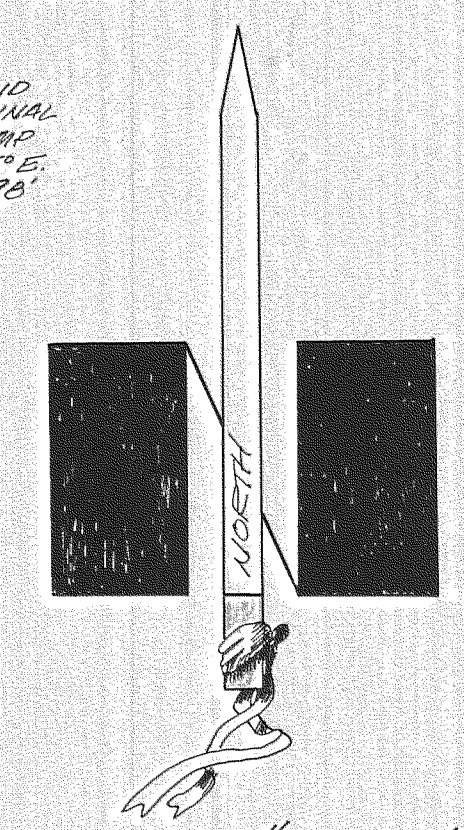
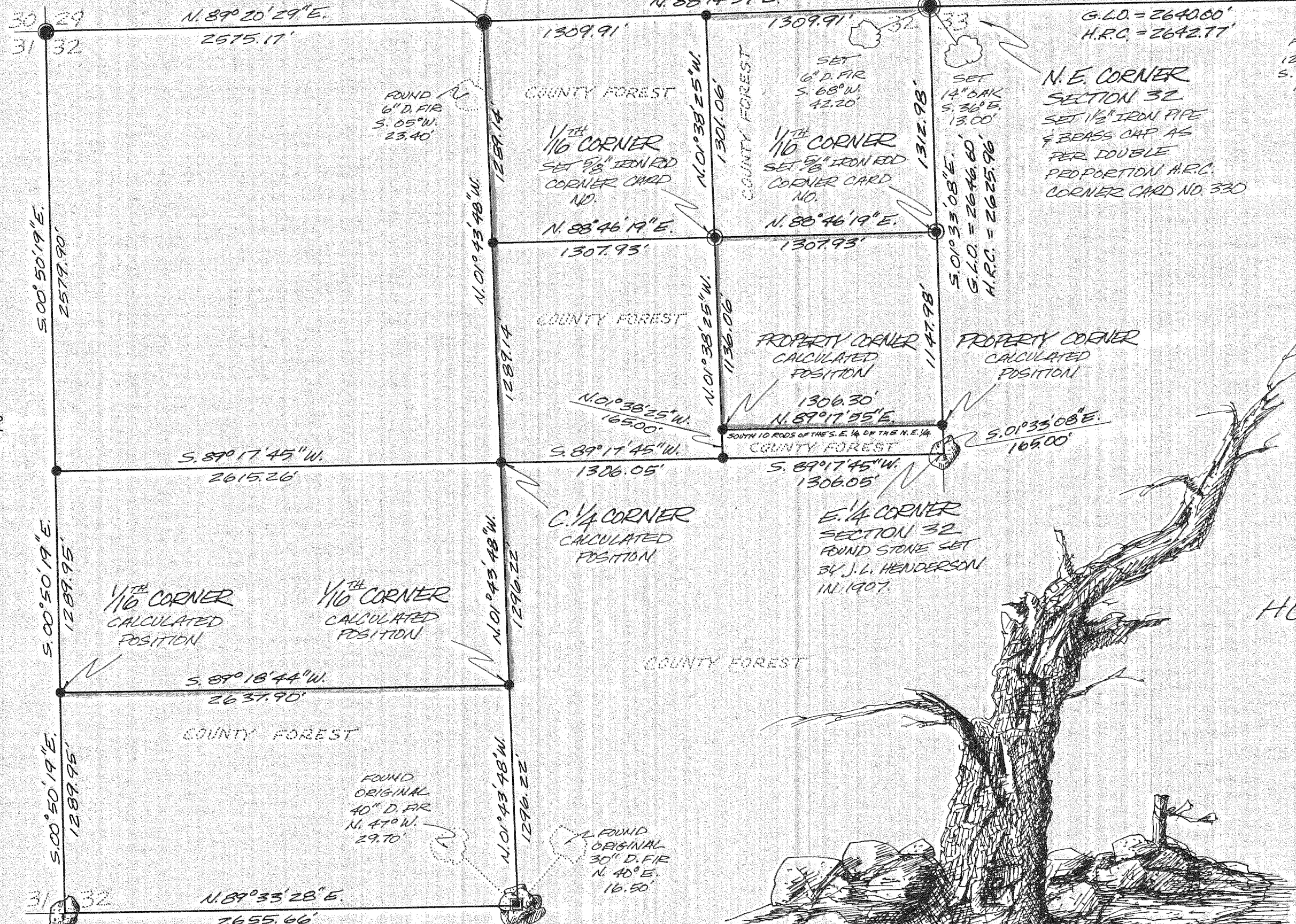
1/10 CORNER CALCULATED POSITION

C. 1/4 CORNER CALCULATED POSITION

E. 1/4 CORNER SECTION 32
FOUND STONE SET BY J.L. HENDERSON IN 1907.

S.W. CORNER SECTION 32
FOUND STONE SET BY J.E. GOIT IN 1906 FROM ORIGINAL EVIDENCE.

S. 1/4 CORNER SECTION 32
FOUND MOUND OF STONES & BOTH ORIGINAL WITNESS TREES.



SCALE 1" = 600'
ASSUMED BASIS OF BEARING DRAWN BY L.H. DUDLEY

HOOD RIVER COUNTY SURVEY

SECTION 32
T. 2 N., R. 10 E., W. M.

REGISTERED PROFESSIONAL LAND SURVEYOR
 Richard G. Arnold
 OREGON
 JULY 15, 1983
 RICHARD J. ARNOLD
 2038

FILED
 DATE: DECEMBER 83
 Richard G. Arnold
 COUNTY SURVEYOR
 APRIL 1983
 DATE OF SURVEY
 83079
 NARRATIVE & DRAWING NO.

DRAWING NO. 83079