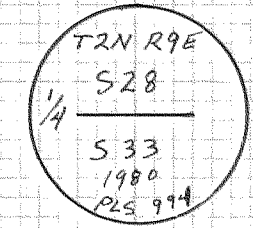
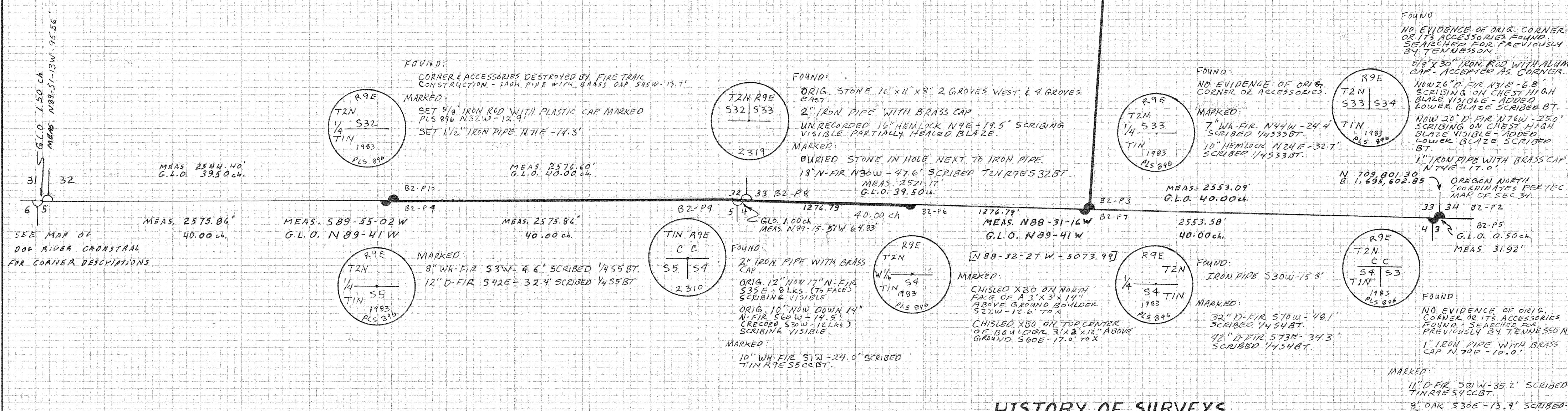
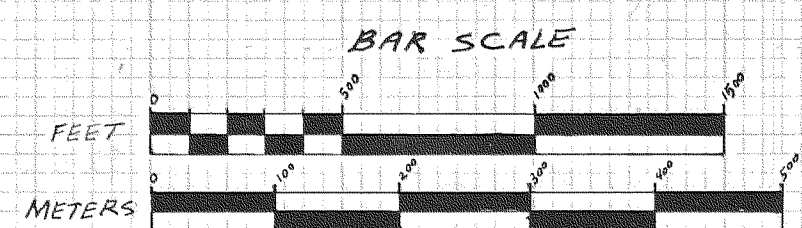


FOUND:  
 TEC 6" FIR N48W-25.2' SCRIBING  
 VISIBLE.  
 TEC 17" FIR S01W-23.0' SCRIBING  
 VISIBLE.



**NARRATIVE**

DATE: NOV. 15, 1983  
 SCALE: 1"=500'  
 INSTRUMENTS USED: WILD T-16, TOPCON EDM  
 CORNER INFO:  
 GUARD POSTS SET AT CORNERS WITH DECALS 54-Z  
 & SURVEY MARKER ON POSTED LINES, AND ONLY DECAL  
 SURVEY MARKER AT OTHER CORNERS.  
 ALL B.T.'S HAVE SIGNS 54-3, 54-4, A 6" RED BAND AND  
 BLAZES PAINTED RED.  
 ALL B.T.'S MARKED HAVE A 1" BRASS DISK NAILED TO  
 BASE OF THE BLAZE-STAMPED PLS 896.  
 BECAUSE THE CLOSING CORNERS WERE SET BY THE  
 DEPUTY, BY RESURVEYING THE TOWNSHIP LINE INSTEAD  
 OF CLOSING FROM THE SOUTH, THE FOUND CLOSING  
 CORNERS ARE EQUAL TO THE SENIOR CORNERS IN BOTH  
 LATITUDE & DEPARTURE.  
 ● - SET 2 1/2" x 30" ALUM. PIPE WITH A 3" ALUM. CAP & MAGNET.  
 ○ - FOUND MONUMENT AS DESCRIBED.  
 --- LINE WITH RED PAINTED BLAZES AND POSTED WITH  
 6" POLYMER POSTS WITH DECAL 54-Z.  
 {} - PER SURVEY BY TENNESSON ENGINEERING  
 BASIS OF BEARING: TENNESSON ENGINEERING SURVEY  
 FROM N 74 TO SE CORNER SEC. 33  
 S 26-04-16E  
 81-PZ FIELD BOOK & PAGE NUMBER.



**HISTORY OF SURVEYS**

THE TOWNSHIP LINE WAS ORIGINALLY SURVEYED AND TIN, R9E SUBDIVIDED BY DEPUTY LABON WHEELER IN 1883 UNDER CONTRACT NO. 482.  
 THE TOWNSHIP LINE WAS RESURVEYED AND TIN, R9E SUBDIVIDED BY DEPUTY NEWTON CLARK IN 1884 UNDER CONTRACT NO. 502 DURING WHICH HE SET CLOSING CORNERS AS HE RETRACED THE NORTH LINE.  
 S33 S34 & 1/4 28 33 WERE SET BY PROPORTION BY TENNESSON IN 1979 & 1981 RESPECTIVELY.

**REGISTERED PROFESSIONAL LAND SURVEYOR**  
 Larry D. Bishop  
**OREGON**  
 LARRY D. BISHOP  
 838

**FILED**  
 DEC 23 1983  
 Richard G. Amell  
 COUNTY SURVEYOR  
 DEPUTY

**PLAT OF SURVEY**  
**GREEN POINT CADASTRAL**  
 SEC. 33 T2N, R9E, PORTION OF TOWNSHIP LINE T1 & T2N, R9E  
 HOOD RIVER COUNTY ORE.

**BISHOP SURVEYING INC.**  
 P.O. BOX 729, HOOD RIVER ORE. 97031  
 (503) 386-5122  
 PROJECT NO. 83019

I, LARRY D. BISHOP, A REGISTERED LAND SURVEYOR IN THE STATE OF OREGON, HEREBY CERTIFY THAT THIS PLAT AND THE NOTES HEREON ARE A CORRECT REPRESENTATION OF A SURVEY I PERFORMED DURING THE MONTH OF NOV. 1983 AT THE REQUEST OF THE U.S.D.A. FOREST SERVICE IN ACCORDANCE WITH THE STATUTES OF OREGON AND THE ARTICLES OF MY CONTRACT.  
 Larry D. Bishop  
 LARRY D. BISHOP  
 REGISTERED LAND SURVEYOR NO. 896

H.R.C. Drawing # 83078

83078