

NARRATIVE:

The Willamette Base Line thru R.11E. was originally surveyed in 1859 by David P. Thompson. In 1882 Henry Meldrum was surveying the exterior of T.1N., R.11E. & found said Thompson's work out of specifications, therefore he resurveyed the Base Line thru R.11E. In 1965 & 1968 the B.L.M. remonumented found original corners set by both Thompson & Meldrum along the Base Line thru R.11E. The B.L.M. also set a certain number of 1/4th corners & missing original corners. It was B.L.M.'s opinion that both Thompson & Meldrum corners would dictate the location of the Base Line & that Meldrum corners would control the section subdivisions.

In 1882 Henry Meldrum surveyed the West boundary of T.1S., R.11E., W.M. Meldrum also did the section subdivision of sections 4, 5, 6, 7, 8, & 9 of T.1S., R.11E., W.M. Meldrum also did the section subdivision of sections 32 & 33 of T.1N., R.11E., W.M.

In 1965 the B.L.M. remonumented the majority of all the section & 1/4 corners controlling sections 4, 5, 6, 7, 8, & 9 of T.1S., R.11E., W.M. In 1968 the B.L.M. set a certain number of missing corners & 1/4th corners in said sections. It was found in the course of my survey that the B.L.M. 1968 corner set as the S. 1/4 corner of said section 6 is 370' WESTERLY of their recorded survey. This problem has been brought to the attention of the B.L.M. & they will correct the problem when a field crew is available.

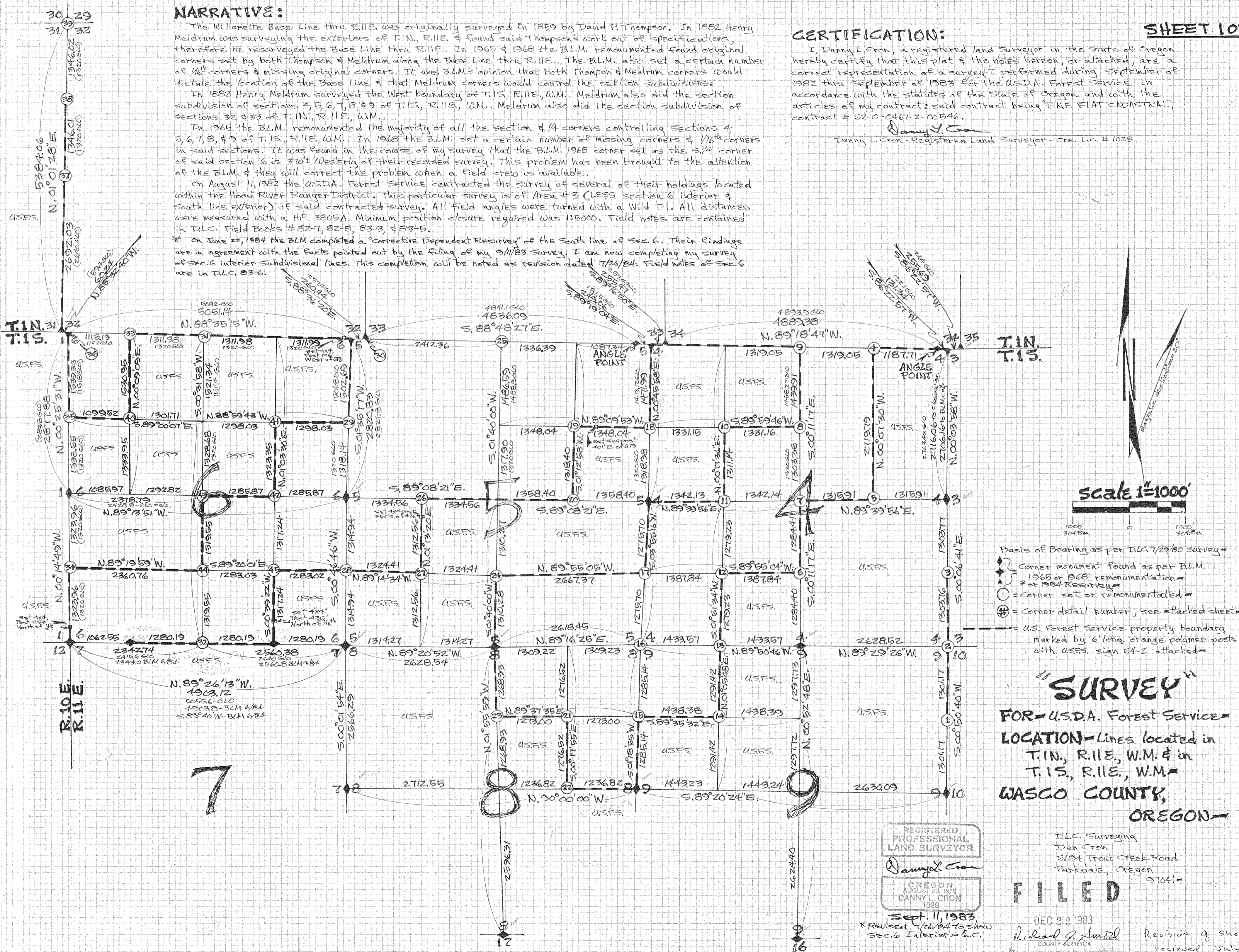
On August 11, 1982 the U.S.D.A. Forest Service contracted the survey of several of their holdings located within the Hood River Ranger District. This particular survey is of Area #3 (LESS section 6 interior & South line exterior) of said contracted survey. All field angles were turned with a Wild T1. All distances were measured with a HP. 3805A. Minimum position closure required was 1:5000. Field notes are contained in D.L.C. Field Books # 82-7, 82-8, 83-3, & 83-5.

* On June 22, 1984 the BLM completed a "Corrective Dependent Resurvey" of the South line of Sec. 6. Their findings are in agreement with the facts pointed out by the filing of my 5/11/83 Survey. I am now completing my survey of Sec. 6 interior subdivisional lines. This completion will be noted as revision dated 7/26/84. Field notes of Sec. 6 are in D.L.C. 83-6.

CERTIFICATION:

I, Danny L. Cron, a registered land surveyor in the State of Oregon hereby certify that this plat & the notes hereon, or attached, are a correct representation of a survey I performed during September of 1982 thru September of 1983 for the U.S.D.A. Forest Service in accordance with the statutes of the State of Oregon and with the articles of my contract: said contract being "PINE FLAT CADASTRAL", contract # 52-0-0461-2-06546.

Danny L. Cron
Danny L. Cron - Registered Land Surveyor - Ore. Lic. # 1028



- ◆ Corner monument found as per B.L.M. 1965 or 1968 remonumentation - * or 1984 Resurvey -
- = Corner set or remonumented -
- ⊕ = Corner detail number, see attached sheet -
- U.S. Forest Service property boundary marked by 6' long orange polymer posts with U.S.F.S. sign 54-Z attached -

SURVEY
 FOR U.S.D.A. Forest Service
 LOCATION - Lines located in
 T.1N., R.11E., W.M. & in
 T.1S., R.11E., W.M.
 WASCO COUNTY,
 OREGON

REGISTERED PROFESSIONAL LAND SURVEYOR
 Danny L. Cron
 OREGON
 AUGUST 22, 1975
 DANNY L. CRON
 1028

D.L.C. Surveying
 Dan Cron
 6694 Trout Creek Road
 Parkdale, Oregon 97041

FILED

Sept. 11, 1983
* Revised 7/26/84 to show Sec. 6 Interior - D.C.

DEC 22 1983
Richard G. Arnold
COUNTY CLERK

Revision of sheets 1 & 2 received July 26, 1984
Richard G. Arnold

1 N. 1/6 Cor. Sec. 9 & 10

Set 2"x30" al. pipe with 3" al. cap. Cap stamped: BT's set: 7" oak - N. 81°W - 83' - scribed N 1/6 59 BT 6" oak - N. 32°E - 10.6' - " N 1/6 510 BT

TIS RILE N 1/6 510 59 510 1982 PLS 1028

2 SE. Cor. Sec. 4

Found BLM stamped brass cap as set from original evidence. Cap stamped: BT's Found: 24" Pine stump - 5.35°W - 126' - original BT. 5" Pine - N. 10°E - 47' - BLM 1968 BT. Dead 8" Pine - 5.84°E - 29 1/2' - BLM 68 BT. 15" Fir - 5.38°W - 26 1/2' - BLM 68 BT. 7" Pine - 5.88°W - 49' - BLM 68 BT.

TIS RUE 24 53 59 510 1968

3 S. 1/6 Cor. Sec. 4 & 3

Set 2"x30" al. pipe with 3" al. cap. Cap stamped: BT's set: 20" DF - 5.04°W - 160' - scribed S 1/6 54 BT 12" DF - 5.47°W - 14.9' - " S 1/6 54 BT

TIS RILE S 1/6 54 54 53 1982 PLS 1028

4 E. 1/6 Cor. Sec. 4

Found BLM stamped brass cap as set by BLM by proportionate measurement. Calculated position is 2' N. & 14' W. of BLM cap. Cap is stamped: BT's Found: 15" WF - 5.40°E - 51 1/2' - BLM 68 BT. 13" WF - dead, face down - 5.10°W - 10 1/2' - BLM 68 BT.

E 1/6 54 1968

5 C.E. 1/6 Cor. Sec. 4

Set 2"x30" al. pipe with 3" al. cap. Cap stamped: BT's set: 6" WF - N. 32°E - 17.4' - scribed CE 1/6 54 BT 7" WF - N. 72°W - 12.9' - " CE 1/6 54 BT

TIS RILE E 1/6 C 54 1982 PLS 1028

6 C.S. 1/6 Cor. Sec. 4

Set 2"x30" al. pipe with 3" al. cap. Cap stamped: BT's set: 9" DF - 5.09°W - 7.6' - scribed CS 1/6 54 BT 13" Pine - 5.23°E - 24.8' - " CS 1/6 54 BT

TIS RILE C S 1/6 54 1982 PLS 1028

7 C. 1/4 Cor. Sec. 4

Set 2"x30" al. pipe with 3" al. cap. Cap stamped: BT's set: 7" WF - N. 42°E - 7.3' - scribed C 1/4 54 BT 8" WF - 5.66°W - 22.9' - " C 1/4 54 BT

TIS RILE C 1/4 54 1982 PLS 1028

8 C.N. 1/6 Cor. Sec. 4

Set 2"x30" al. pipe with 3" al. cap. Cap stamped: BT's set: 5" oak - 5.52°W - 6.9' - scribed CN 1/6 54 BT 7" oak - N. 22°W - 2.3' - " CN 1/6 54 BT

TIS RILE C N 1/6 54 1982 PLS 1028

9 N. 1/4 Cor. Sec. 4

Found BLM stamped brass cap as set by BLM by proportionate measurement. Calculated position is 0.2'S & 0.2'W. of BLM cap. Cap stamped: BT's Found: 10" Pine - 5.05°E - 36.96' - BLM 68 BT. 13" DF - 5.73°W - 24.42' - BLM 68 BT.

N 1/4 54 TIS RILE 1968

10 N.W. 1/6 Cor. Sec. 4

Set 2"x30" al. pipe with 3" al. cap. Cap stamped: BT's set: 9" WF - 5.84°E - 8.6' - scribed NW 1/6 54 BT 8" WF - N. 44°E - 9.0' - " NW 1/6 54 BT

TIS RILE N W 1/6 54 1982 PLS 1028

11 C.W. 1/6 Cor. Sec. 4

Set 2"x30" al. pipe with 3" al. cap. Cap stamped: BT's set: 9" Pine - 5.57°W - 13.3' - scribed CW 1/6 54 BT 18" Pine - N. 26°W - 20.2' - scribed CW 1/6 54 BT

TIS RUE C W 1/6 C 54 1982 PLS 1028

12 S.W. 1/6 Cor. Sec. 4

Set 2"x30" al. pipe with 3" al. cap. Cap stamped: BT's set: 13" DF - N. 51°E - 9.9' - scribed SW 1/6 54 BT 9" WF - 5.80°E - 26.4' - " SW 1/6 54 BT

TIS RILE S W 1/6 54 1982 PLS 1028

13 W. 1/6 Cor. Sec. 4 & 9

Found D.L.C. 1980 stamped brass cap on 1 1/2" I.P. Calculated position is 1.0' N. & 0.5' W. of D.L.C. cap. BT's Found: 22" DF - 5.20°W - 19.2' - scribed W 1/6 59 BT 20" DF - N. 55°E - 11.9' - " W 1/6 54 BT

14 N.W. 1/6 Cor. Sec. 9

Found D.L.C. 1980 stamped brass cap on 1 1/2" I.P. Calculated position is 0.1'S & 0.4'E. of D.L.C. cap. BT's Found: 16" Pine - N. 20°E - 12.6' - scribed NW 1/6 59 BT Down 36" Pine - N. 66°W - 27.8'

15 N. 1/6 Cor. Sec. 8 & 9

Found D.L.C. 1980 stamped brass cap on 1 1/2" I.P. Calculated position is 0.8' N. of D.L.C. cap. BT's Found: 4" WF - N. 76°W - 4.2' 18" WF - 5.20°E - 31.1' - scribed N 1/6 59 BT

16 S.W. Cor. Sec. 4

Set 2"x30" al. pipe with 3" al. cap. Cap stamped: BT's Found: 17" Fir stump - N. 72°W - 63' - orig. BT. 17" WF - N. 18°E - 70 1/2' - BLM 68 BT. 9" WF - 5.23°E - 62.04' - " " 13" WF - 5.59°W - 80.85' - " " 8" WF - N. 48°W - 52.14' - " " "

TIS RILE S W 54 58 59 1982 PLS 1028

17 S. 1/6 Cor. Sec. 5 & 4

Set 2"x30" al. pipe with 3" al. cap. Cap stamped: BT's set: 13" DF - 5.80°W - 33.8' - scribed S 1/6 55 BT 9" DF - N. 40°W - 28.6' - " S 1/6 55 BT

TIS RILE S 1/6 55 55 54 1982 PLS 1028

18 N. 1/6 Cor. Sec. 5 & 4

Set 2"x30" al. pipe with 3" al. cap. Cap stamped: BT's set: 8" DF - 5.80°E - 9.6' - scribed N 1/6 54 BT 11" Pine - 5.04°W - 5.4' - " N 1/6 55 BT

TIS RILE N 1/6 55 54 1982 PLS 1028

19 N.E. 1/6 Cor. Sec. 5

Set 2"x30" al. pipe with 3" al. cap. Cap stamped: BT's set: 6" DF - 5.50°W - 5.2' - scribed NE 1/6 55 BT 8" DF - N. 42°W - 5.0' - " NE 1/6 55 BT

TIS RILE N E 1/6 55 1982 PLS 1028

20 C.E. 1/6 Cor. Sec. 5

Set 2"x30" al. pipe with 3" al. cap. Cap stamped: BT's set: 9" WF - 5.43°W - 42.3' - scribed CE 1/6 55 BT 8" WF - 5.80°W - 28.4' - " CE 1/6 55 BT

TIS RILE C E 1/6 C 55 1982 PLS 1028

21 N.E. 1/6 Cor. Sec. 8

Found D.L.C. 1980 stamped brass cap on 1 1/2" I.P. Calculated position is 0.5' N. of cap. BT's Found: 4" DF - N. 76°E - 18.8' - X at chest ht. 12" DF - 5.36°E - 22.9' - scribed NE 1/6 58 BT

22 C.E. 1/6 Cor. Sec. 8

Found D.L.C. 1980 stamped brass cap on 1 1/2" I.P. Calculated position is 0.3' N. & 0.1' W. of cap. BT's Found: 20" DF - N. 47°W - 20.8' - scribed CE 1/6 58 BT 12" DF - 5.10°W - 24.0' - " CE 1/6 58 BT

23 C.N. 1/6 Cor. Sec. 8

Set 2"x30" al. pipe with 3" al. cap. Cap stamped: BT's set: 8" WF - North - 17.3' - scribed CN 1/6 58 BT 22" DF - 5.40°W - 18.0' - " CN 1/6 58 BT

TIS RILE C N 1/6 58 1982 PLS 1028

24 C.S. 1/6 Cor. Sec. 5

Set 2"x30" al. pipe with 3" al. cap. Cap stamped: BT's set: 7" WF - N. 50°W - 18.8' - scribed CS 1/6 55 BT 12" WF - 5.86°E - 31.8' - " CS 1/6 55 BT

TIS RILE C S 1/6 55 1982 PLS 1028

25 N. 1/4 Cor. Sec. 5

Found BLM stamped brass cap as set by single proportionate measurement. Calculated position is by single proportion. Cap stamped: BT's Found: 6" Fir - 5.16°E - 27 1/2' - 1968 BLM BT. 10" Fir - 5.32 1/2°W - 60 1/2' - 1968 BLM BT.

N 1/4 55 TIS RILE 1968

26 C.W. 1/6 Cor. Sec. 5

Set 2"x30" al. pipe with 3" al. cap. Cap stamped: BT's set: 15" WF - 5.76°E - 22.9' - scribed CW 1/6 55 BT 9" WF - N. 25°E - 32.2' - " CW 1/6 55 BT

TIS RUE C W 1/6 C 55 1982 PLS 1028

27 S.W. 1/6 Cor. Sec. 5

Set 2"x30" al. pipe with 3" al. cap. Cap stamped: BT's set: 10" WF - N. 46°E - 20.5' - scribed SW 1/6 55 BT 11" WF - 5.38°W - 20.2' - " SW 1/6 55 BT

TIS RUE S W 1/6 55 1982 PLS 1028

28 S. 1/6 Cor. Sec. 6 & 5

Set 2"x30" al. pipe with 3" al. cap. Cap stamped: BT's set: 7" DF - N. 83°E - 32.8' - scribed S 1/6 55 BT 10" WF - N. 72°W - 24.8' - " S 1/6 56 BT

TIS RILE S 1/6 56 55 1982 PLS 1028

29 N. 1/6 Cor. Sec. 6 & 5

Set 2"x30" al. pipe with 3" al. cap. Cap stamped: BT's set: 13" WF - 5.55°E - 14.4' - scribed N 1/6 55 BT 7" WF - 5.14°W - 18.5' - " N 1/6 56 BT

TIS RILE N 1/6 56 55 1982 PLS 1028

30 S.W. Cor. Sec. 32

Found BLM stamped brass cap as set from original evidence. Cap stamped: BT's Found: 20" Fir 6' high stump - N. 40°E - 24 1/2' orig. BT. 17" Fir 9' high snag - N. 15 1/2°W - 15 1/2' orig. BT. 9" DF - 7' high snag - N. 50°W - 2 1/2' - BLM 65 BT. New BT: 9" WF - N. 55°E - 53.3' - scribed TIS RILE S33 BT

TIS RILE S W 33 53 53 1982 PLS 1028

31 N. 1/4 Cor. Sec. 6

Found BLM stamped brass cap wiped out by logging activity. Reset same by single proportionate measurement. Cap stamped: BT's Found: 11" WF - 5.72°W - 51 1/2' - BLM BT. Dead 24" WF - 5.22°E - 35 1/2' BLM BT. BT. set: 16" DF - 5.06°E - 27.3' - scribed 1/4 56 BT

N 1/4 56 TIS RILE 1968

32 S. 1/4 Cor. Sec. 6

Found BLM stamped brass cap as set by single proportionate method 370'± West of calculated position. True position not set. BLM supposedly will correct fall of 1983. SEE BLM 6722/84 SURVEY 7/24/84 D.C.

S 1/4 56 TIS RILE 1968

33 W. 1/6 Cor. Sec. 6

Found BLM stamped brass cap as set by proportionate measurement. Calculated position is 1.2'S & 1.0'W. of cap. Cap stamped: BT's Found: 16" DF - 5.62°E - 11 1/2' - BLM BT. 9" WF - 5.75°W - 30 1/2' - BLM BT.

W 1/6 56 TIS RILE 1968

34 S. 1/6 Cor. Sec. 1 & 6

Set 2"x30" al. pipe with 3" al. cap. Cap stamped: BT's set: 10" WF - 5.44°E - 10.1' - scribed S 1/6 56 BT 7" WF - N. 52°W - 30.4' - " S 1/6 51 BT

TIS RUE S 1/6 56 51 54 1982 PLS 1028

35 N. 1/6 Cor. Sec. 1 & 6

Set 2"x30" al. pipe with 3" al. cap. Cap stamped: BT's set: 7" WF - N. 80°E - 29.8' - scribed N 1/6 56 BT 13" WF - N. 76°W - 34.9' - " N 1/6 51 BT

TIS RUE N 1/6 56 51 56 1982 PLS 1028

36 N.W. Cor. Sec. 6

Found BLM stamped brass cap as set from original evidence. Cap stamped: BT's Found: 34" Fir 6' high stump - 560°E - 69 1/2' orig. BT. 10" WF - 5.62°W - 46 1/2' - BLM 1968 BT. Down 9" Fir - 5.55°E - 48 1/2'

TIS RILE S W 56 56 56 1968

37 W. 1/4 Cor. Sec. 32

Set 2"x30" al. pipe with 3" al. cap. Cap stamped: BT's set: 9" WF - 5.68°E - 47.1' - scribed 1/4 53 2 BT 11" WF - 5.13°W - 37.4' - " 1/4 53 1 BT

TIS RILE W 1/4 53 2 53 1 1982 PLS 1028

38 N. 1/6 Cor. Sec. 31 & 32

Set 2"x30" al. pipe with 3" al. cap. Cap stamped: BT's set: 10" WF - N. 05°W - 24.9' - scribed N 1/6 53 1 BT 9" WF - 5.48°W - 21.5' - " N 1/6 53 1 BT

TIS RILE N 1/6 53 1 53 2 1982 PLS 1028

39 N.W. Cor. Sec. 32

Found D.L.C. 1982 3" al. cap. as set from original evidence.

POSTING & MONUMENTATION

1) POSTING - Lines shown as U.S.D.A. Forest Service Property Line Posted are marked by 6' long orange fiberglass posts marked with USFS sign 54-2. Said posts are set a maximum interval of 200' & so as to be intervisible if the ground were cleared. All trees 6" or greater in diameter within 3' of line were blazed. USFS trees double blazed & private trees single blazed.

2) BEARING TREES - Bearing trees set are blazed with a 5" x 1/8" scribed blaze placed as close to the ground as possible with a brass disc stamped 251028 affixed at the bottom of said blaze. All bearing trees set or found have the following: a) A 4 1/2" x 1/2" B.T. tag attached to face at eye ht. b) A 1" x 1/8" USFS tag warning against destroying attached to back at eye height. c) A 6" red band painted around tree above signs.

3) CORNER MONUMENTS - Corner monuments set are 2"x30" aluminum pipes with a 3" stamped aluminum cap affixed. Said 2"x30" aluminum pipes are flared at the bottom & are set 24" in the ground unless noted. At all corner monuments set or found a 1" x 1/8" USFS tag warning against destroying attached to a orange fiberglass post was set, in addition orange fiberglass posts were set within 3' to 5' of corner on U.S.D.A. Forest Service property lines.

* 40 N.W. 1/6 Cor. Sec. 6

Set 2"x30" al. pipe with 3" al. cap. Cap stamped: BT's set: 8" WF - N. 78°E - 12.0' - scribed NW 1/6 56 BT 14" WF - 5.40°W - 21.6' - " NW 1/6 56 BT

TIS RILE N W 1/6 56 1982 PLS 1028

* 41 N.E. 1/6 Cor. Sec. 6

Set 2"x30" al. pipe with 3" al. cap. Cap stamped: BT's set: 5" WF - N. 81°E - 32.3' - scribed NE 1/6 56 BT 13" WF - 5.23°E - 41.0' - " NE 1/6 56 BT

TIS RUE N E 1/6 56 1982 PLS 1028

* 42 C.E. 1/6 Cor. Sec. 6

Set 2"x30" al. pipe with 3" al. cap. Cap stamped: BT's set: 4" WF - N. 32°W - 47.9' - scribed CE 1/6 56 BT 12" WF - N. 03°W - 43.0' - " CE 1/6 56 BT

TIS RUE C E 1/6 C 56 1982 PLS 1028

* 43 C. 1/4 Cor. Sec. 6

Set 2"x30" al. pipe with 3" al. cap. Cap stamped: BT's set: 5" DF - N. 09°W - 24' - scribed C 1/4 56 BT 5" DF - 5.42°W - 17.8' - " C 1/4 56 BT

TIS RILE C 1/4 56 1982 PLS 1028

* 44 C.S. 1/6 Cor. Sec. 6

Set 2"x30" al. pipe with 3" al. cap. Cap stamped: BT's set: 3" WF - 5.25°E - 37.8' - scribed CS 1/6 56 BT 9" WF - N. 71°W - 59.1' - " CS 1/6 56 BT

TIS RUE C S 1/6 56 1982 PLS 1028

* 45 S.E. 1/6 Cor. Sec. 6

Set 2"x30" al. pipe with 3" al. cap. Cap stamped: BT's set: 13" WF - N. 78°E - 17.8' - scribed SE 1/6 56 BT 13" WF - N. 12°E - 19.4' - " SE 1/6 56 BT

TIS RILE S E 1/6 56 1982 PLS 1028