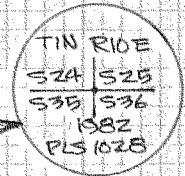


T.I.N., R.10E, W.M.
T.I.N., R.11E, W.M.

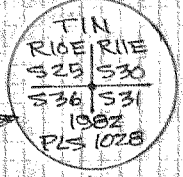
SECTION CORNER

- Found - 1) 30" D.F. orig. B.T. (blaze scar) - N.38°E - 138.6'
 2) 24" D.F. orig. B.T. (blaze scar) - S.45°W - 16.6'
 3) 18" D.F. orig. B.T. (blaze scar) - N.45°W - 37.62'
 Set - 1) 3" Aluminum cap stamped
 2) 5" W.F. - S.10°E - 27.2' - BT scribed "TIN R10E S36 BT"
 3) 15" D.F. - N.80°W - 27.4' - BT scribed "TIN R10E S26 BT"



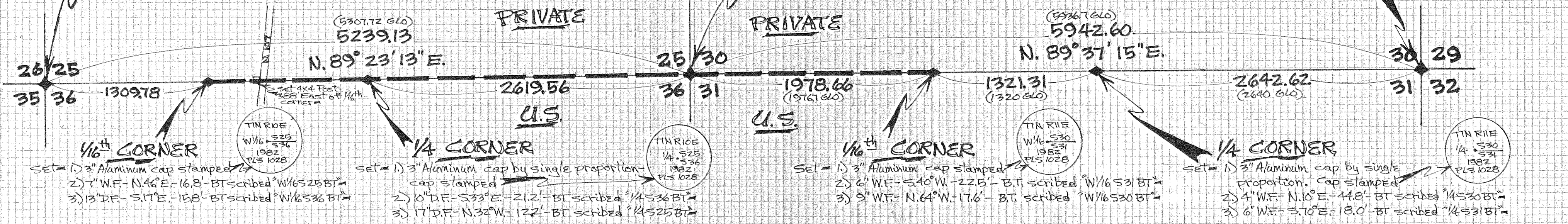
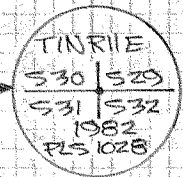
SECTION CORNER

- Found - 1) stamp of orig. B.T. - 37" D.F. - N.12°W - 46.4' chapped out to see 1/2 of scribe
 2) stamp of orig. B.T. - 37" W.F. - N.12°E - 49.4'
 3) stamp of orig. B.T. - 32" D.F. - S.46°W - 41.2'
 4) Orig. B.T. - 38" D.F. (leaver) - S.24°E - 51.2' scribe TIN visible
 5) Marked Stone - S.08°E - 34.7'
 Set - 1) 3" Aluminum cap stamped
 2) 5" W.F. - N.44°W - 34.2' - scribed "TIN R10E S25 BT"
 3) 9" W.F. - N.26°E - 61.0' - scribed "TIN R11E S30 BT"
 4) 7" W.F. - S.36°E - 28.4' - scribed "TIN R11E S31 BT"
 5) 4" W.F. - S.50°W - 15.3' - scribed "TIN R10E S36 BT"



SECTION CORNER

- Found - 1) Marked Stone in mound of stone
 2) Stamp of 40" W.F. orig. B.T. - S.60°W - 20.0'
 Set - 1) 3" Aluminum cap in place of marked stone - cap stamped
 2) Southern corner of B.P.A. tower @ horiz. brace 1/4' off ground - N.18°W - 205.4'
 3) N.E. corner of N.E. B.P.A. tower (eg @ horiz. brace) - S.72°W - 132.1'



POSTING & MONUMENTATION

- POSTING** - Lines shown as "USDA Forest Service Property Line Posted" are marked by 6' long orange fiberglass posts marked with U.S.F.S. sign 54-2. Said posts are set at a maximum interval of 150' ± 50' as to be intervisible if the ground were cleared. All trees 6" or greater in diameter within 3' of line were blazed - U.S.F.S. trees double blazed & private trees single blazed.
- BEARING TREES** - Bearing trees set are blazed with a 5" x 18" scribed blaze placed as close to the ground as possible with a brass disc stamped "151028" nailed at the bottom of said 5" x 18" scribed blaze unless noted. All bearing trees set or found have the following:
 - A 4 1/2" x 5" B.T. tag attached to face at eye height.
 - A 7" x 10" U.S.F.S. tag warning against destroying attached to back at eye height.
 - A 6" red band painted around tree above signs.
- CORNER MONUMENTS** - Corner monuments set are 2" x 30" aluminum pipes with a stamped 3" aluminum cap affixed. Said 2" x 30" aluminum pipes are flared at the bottom & are set 24" ± in the ground unless noted. At all corner monuments set or found a 7" x 10" U.S.F.S. tag warning against destroying attached to a orange fiberglass post was set, in addition orange fiberglass posts were set within 3' to 5' of corner on U.S.D.A. Forest Service property lines.

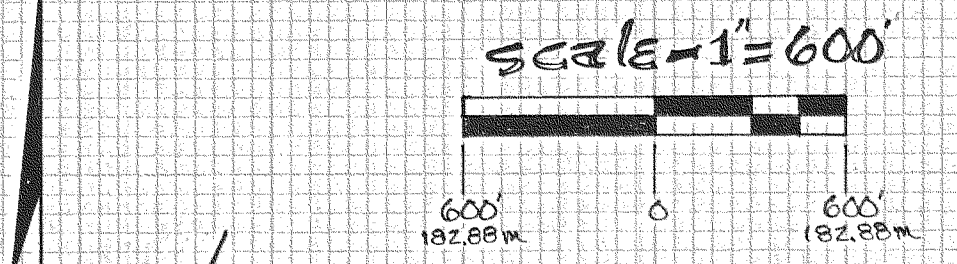
NARRATIVE

The East line of T.I.N., R.10E, W.M. was originally surveyed in Oct. of 1879 by Alonzo Gesner. Section 25 of T.I.N., R.10E, was also originally surveyed by Alonzo Gesner. Section 30 of T.I.N., R.11E, was originally surveyed by Henry Meldrum. On August 11, 1982 the U.S.D.A. Forest Service contracted the survey of several of their holdings located within the Hood River Ranger District. This particular survey is of Area # 4 of said contracted survey. All field angles were turned with a Wild T-1. All distances were measured with a AP3805A. Minimum position closure required was 1:5000. Field notes are contained in D.L.C. Field Book 82-6.

CERTIFICATION

I, Danny L. Cron, a registered land surveyor in the State of Oregon, hereby certify that this plat & the notes hereon, or attached, are a correct representation of a survey I performed from September to mid December of 1982 for the U.S.D.A. Forest Service in accordance with the statutes of the State of Oregon and with the articles of my contract: said contract being "PINE FLAT CADASTRAL", contract # 520-0467-2-00546.

Danny L. Cron
 Danny L. Cron - Registered Land Surveyor - ORE. Lic. #1628



Basis of bearing as per Oregon North Zone Coordinate System as per D.L.C. 9/10/79 Survey

USDA. FOREST SERVICE
 PROPERTY LINE POSTED

"SURVEY"
 FOR - U.S.D.A. Forest Service
 LOCATION - Lines located in T.I.N. of R.10E & R.11E, W.M.
 HOOD RIVER COUNTY, OREGON

REGISTERED PROFESSIONAL LAND SURVEYOR

Danny L. Cron
 OREGON
 AUGUST 22, 1975
 DANNY L. CRON
 1028

D.L.C. Surveying
 Dan Cron
 5694 Trout Creek Road
 Parkdale, Oregon
 97041

FILED
 DEC 22 1983
 Michael J. Arnold
 COUNTY CLERK

Aug. 8, 1983

83074