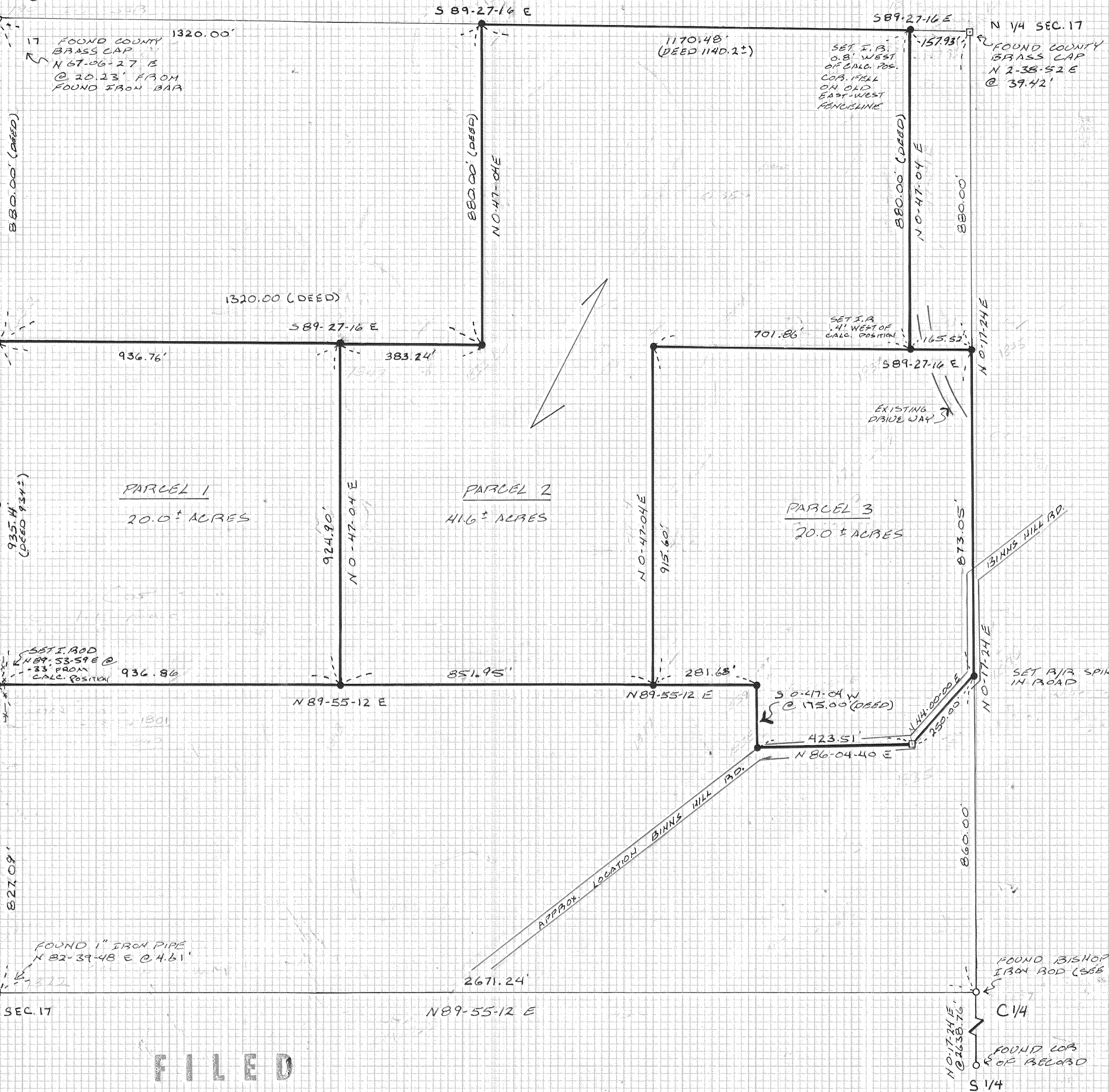


NOTE:
 FOUND OLD IRON BAR BURIED 2' FEET BELOW SURFACE. A 11" x 1/2" x 6" BASALT STONE WAS PLACED DIRECTLY OVER IRON BAR. NO OBVIOUS MARKS ON STONE.
 THE IRON BAR IS 14' EAST OF OUR DOUBLE PROP SECTION COR. ACCEPTED FROM BAR.
 FOR INFORMATION ON DOUBLE PROP SEE WORK MAP.



BASIS OF BEARING
 BISHOP SURVEY IN S.E. 1/4
 OF SECTION 17, DATED 7/30/80.

NARRATIVE

IN 1908 JOHN L. HENDERSON SUBDIVIDED SECTIONS 17 AND 18, T. 2 N., R. 10 E. W.M. WITH THE AID OF HIS FIELD NOTES AND PLATS OF BOTH SECTIONS, IT WAS POSSIBLE TO RE-ESTABLISH SEVERAL CORNERS IN QUESTION. THE DISTANCES AND ANGLES SHOWN ON THIS PLAT ARE CONSISTANT WITH THOSE OF HENDERSON'S.
 SEE ALSO SURVEYS DONE BY HENRY HACKETT, DEPUTY COUNTY SURVEYOR, AND P. M. MORSE.
 FOR COMPLETE DETAILS AND EXPLANATIONS OF CORNER RE-ESTABLISHMENT IN SECTIONS 17 AND 18, SEE THE ACCOMPANYING TERRA SURVEYING WORK MAP FILED AND MADE A PART OF THIS PLAT.

REGISTERED
 PROFESSIONAL
 LAND SURVEYOR
Ray O. Gaylord
 OREGON
 1977
 ROY O. GAYLORD
 1918

SURVEY LOCATION
 THE NORTHWEST 1/4, SEC. 17,
 T. 2 N., R. 10 E., W. M., & PORTIONS
 OF SECTION 18, T. 2 N., R. 10 E., W.M.

LEGEND
 ● SET 5/8" x 30" I.R. W/ PLASTIC CAP
 ○ FOUND MONUMENT AS NOTED
 □ CALCULATED POSITION, NOT SET

TERRA SURVEYING
 DATE: 7/83
 SCALE: 1" = 200'
 PROJECT # 8334
 P.O. BOX 617, HOOD RIVER ORE.
 (503) 386-4531

FILED
 DEC 16 1983
 Richard A. Smith
 COUNTY CLERK

PARTITION PLAT
 FOR
GLEN ADAMS, ET. AL.
 HOOD RIVER, ORE.

#83072
 P91

83072

