

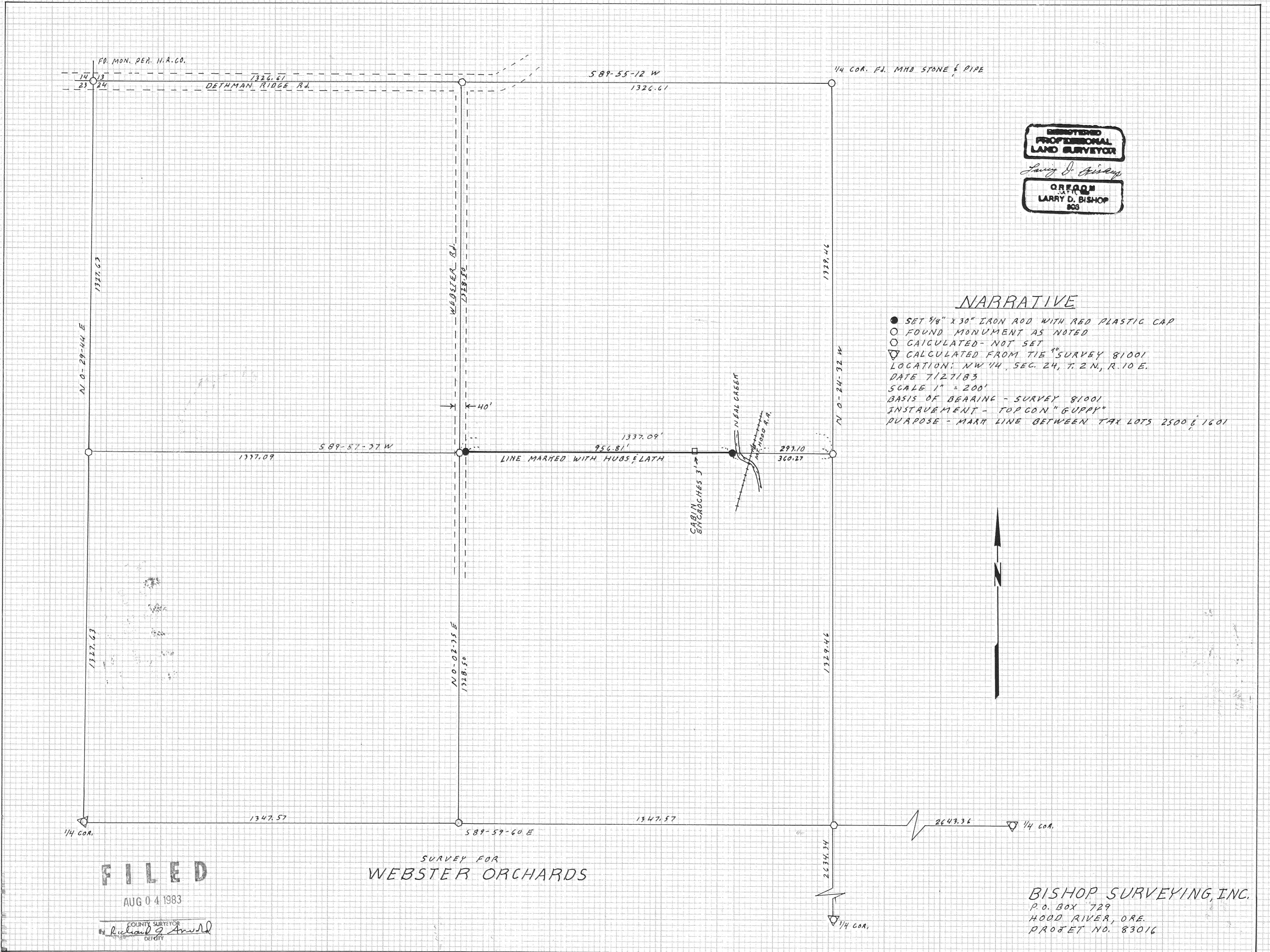
REGISTERED
PROFESSIONAL
LAND SURVEYOR

Larry D. Bishop

CREATED
LARRY D. BISHOP
833

NARRATIVE

- SET 5/8" X 30" IRON ROD WITH RED PLASTIC CAP
 - FOUND MONUMENT AS NOTED
 - CALCULATED - NOT SET
 - ▽ CALCULATED FROM TIE TO SURVEY 81001
- LOCATION: NW 1/4, SEC. 24, T. 2 N., R. 10 E.
DATE 7/27/83
SCALE 1" = 200'
BASIS OF BEARING - SURVEY 81001
INSTRUMENT - TOP CON "GUPPY"
PURPOSE - MARK LINE BETWEEN TAX LOTS 2500 & 1601



FILED

AUG 04 1983

COUNTY SURVEYOR
Richard J. Arnold
DEPUTY

SURVEY FOR
WEBSTER ORCHARDS

BISHOP SURVEYING, INC.
P.O. BOX 729
HOOD RIVER, ORE.
PROJECT NO. 83016

83042

83042