

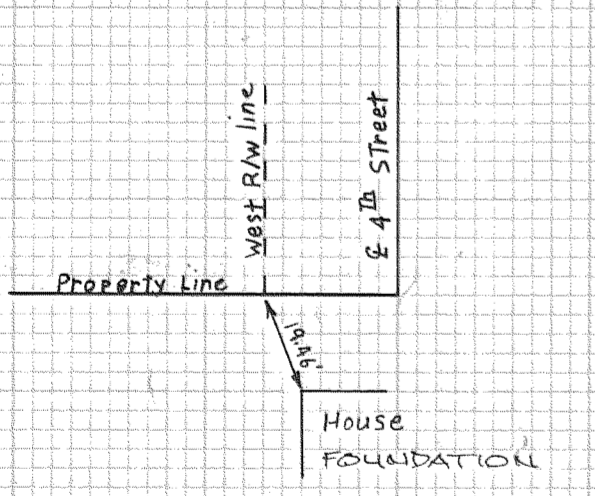
Legend: ● Set 5/8" x 30" Iron Rod
○ Found Monument of Record
□ Calculated not Set

Narrative: Survey Located in SE 1/4, NW 1/4, Section 36 T.3N., R.10E, W.M.

Note: Barrett-Sipma is a resubdivision of Parkhurst

Basis of Bearing: City Datum

NOTE: PLEASANT VIEW WAS FIRST SUBDIVISION PLATTED SOUTH OF COE DLC AND EAST OF SECTION LINE
PARKHURST WAS SECOND AND JOINED PLEASANT VIEW'S EAST LINE AND COE DLC. 3RD STREET WAS CREATED WITH LAND REMAINING BETWEEN THE NORTH & SOUTH CENTERS OF SECTION LINE BEING 41' AT DLC LINE & 20.3 (PROPORTIONED) ALONG NORTH LINE DIVE AND 40.0 AT S.E. CORNER OF PLAT.
BARRETT SIPMA WAS A REPLAT OF PORTIONS OF PARKHURST AND 3RD STREET SHOWN AS IS BUT THE BLOCK CORNERS OF PARKHURST APPEAR TO REMAIN UNCHANGED.
THEREFORE I SURVEYED 3RD STREET ACCORDING TO THE PARKHURST PLAT.



SKETCH - NOT TO SCALE

Surveyed for
Bob Lausmann
Hood River OR.

FILED
DEC 02 1982
Roy O. Gaylord
COUNTY SURVEYOR
DEPUTY

REGISTERED
PROFESSIONAL
LAND SURVEYOR
ROY O. GAYLORD
JULY 13, 1979
1981

Terra Surveying
Date: 12-10-81
Scale: 1" = 50'
Project: 8151
P.O. Box 617
Hood River Or. 97031