

Initial Point of Townsite of Parkdale - Found ancient 2" x 30 1/2" Pipe, laying sideways buried w/ 1" in w 2" diameter hole dug at calculated position - Monument was apparently disturbed in 1981 when excavation was done for fire hydrant -

S.W. COR. of Block 1 of Parkdale Townsite - Set P.K. nail at S.W. corner of 1935 ± Building Improvement - According to Malcolm McIsaac his father, R.J., had building built & R.J. also commissioned J.W. West to plat the Townsite of Parkdale -

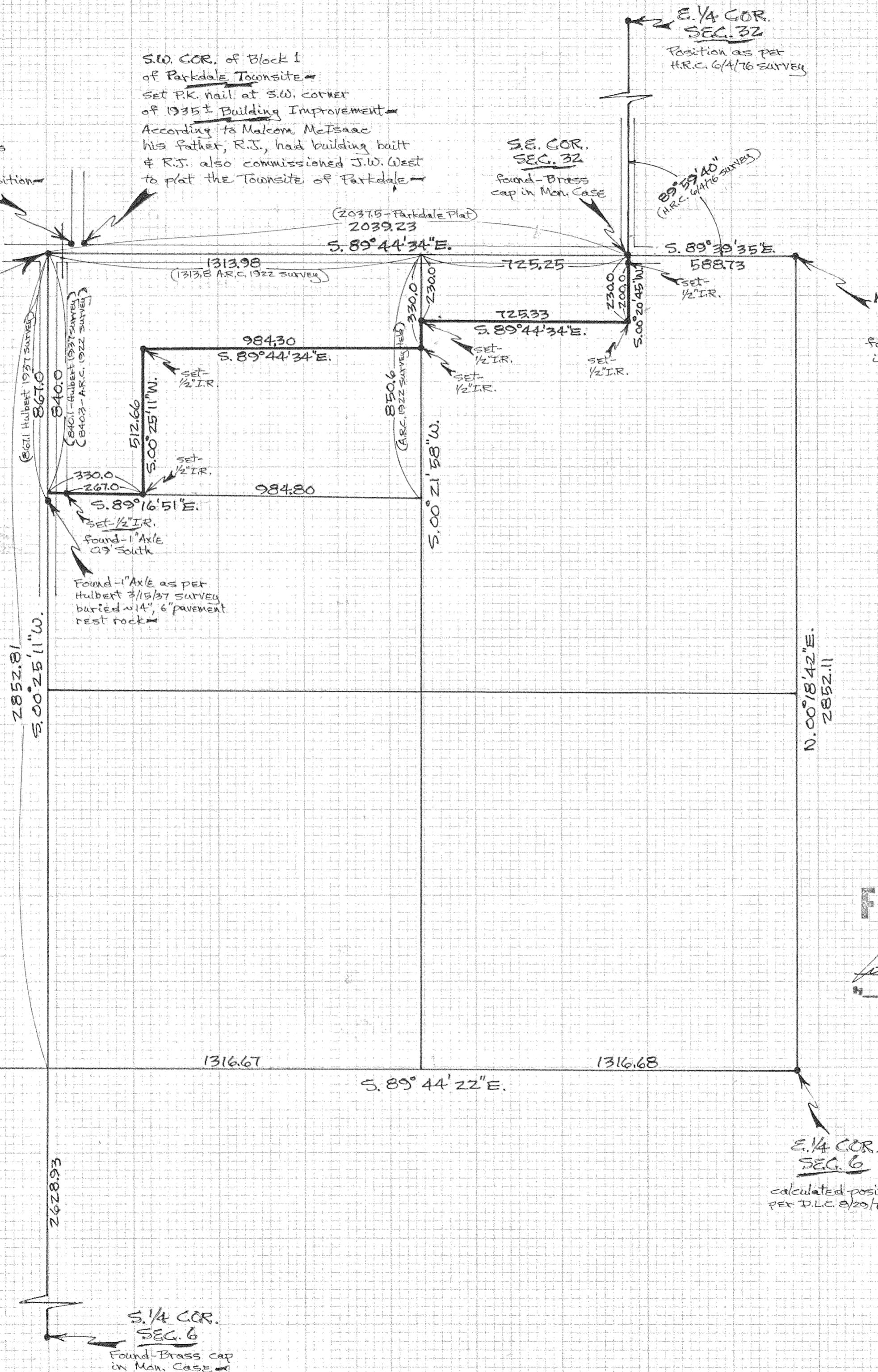
E. 1/4 COR. SEC. 32 - Position as per H.R.C. 6/4/76 Survey

SE. COR. SEC. 32 - Found Brass cap in Mon. Case

N.E. COR. SEC. 6 - Found Brass cap in Mon. Case

N. 1/4 COR. SEC. 6 - Set Railroad spike from existing Witness objects found to the Townsite of Parkdale:

- 1) DE Railroad 530' East
 - 2) Disturbed Initial Point of Townsite of Parkdale being 830' East & 300' North
 - 3) S.W. corner of Block 1 of Townsite of Parkdale being 1230' East & 300' North
 - 4) Platted distances of Townsite of Parkdale are in conformance with measured distances
- Found the following monuments:
- 1) T.E.C. 1969 Brass cap 14.06' North & 0.31' East of True position
 - 2) 1/2" IR covered w/ 1" with pavement 0.54' North & 0.13' East of True position



REGISTERED PROFESSIONAL LAND SURVEYOR
 Danny L. Cron
 OREGON
 AUGUST 22, 1975
 DANNY L. CRON
 1028
 March 15, 1982

FILED
 DEC 0 2 1982
 COUNTY SURVEYOR
 DEPUY

Scale - 1" = 300'
 Basis of bearing as per D.L.C. 8/29/79 survey
 NOTE - Iron Rod monuments set have yellow plastic cap stamped 'LS 1028' affixed

D.L.C. SURVEYOR
 FOR - William Hopper
 LOCATION - Boundary separating Commercial & Residential land from Farm land in the N.E. 1/4 of Sec. 6, T.15, R.10E., W.M.
 HOOD RIVER COUNTY,
 OREGON

D.L.C. Surveying
 Dan Cron
 5694 Front Ct. Rd.
 Parkdale, Ore.
 97041