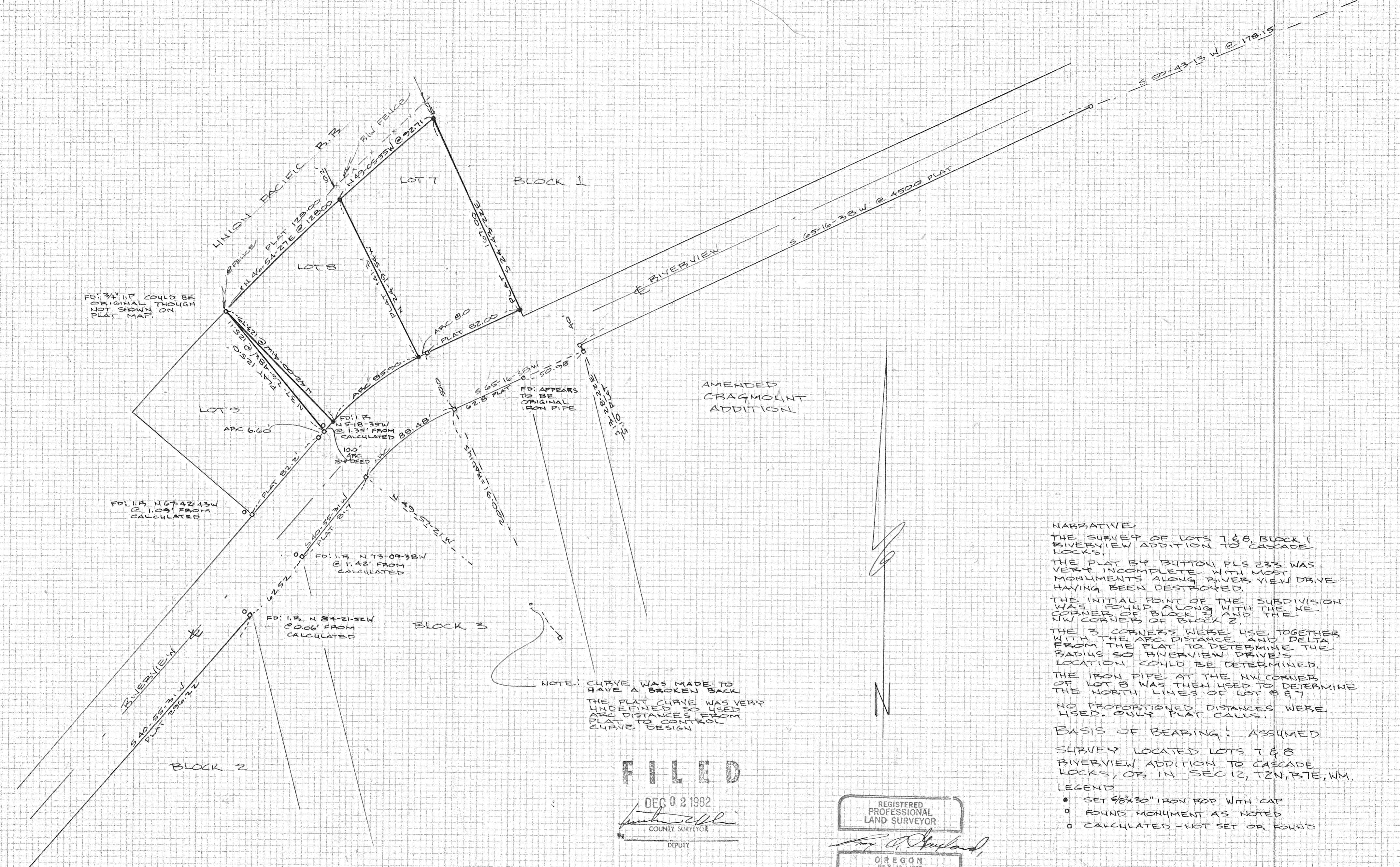


FD: INITIAL POINT OF SUBDIVISION IF FENCE CORNER



FD: 3/4" I.P. COULD BE ORIGINAL THOUGH NOT SHOWN ON PLAT MAP.

FD: 1.3' N 67-42-43 W @ 1.03' FROM CALCULATED

FD: 1.3' N 5-18-35 W @ 1.35' FROM CALCULATED

FD: 1.3' N 73-09-38 W @ 1.42' FROM CALCULATED

FD: 1.3' N 34-21-32 W @ 0.06' FROM CALCULATED

NOTE: CURVE WAS MADE TO HAVE A BROKEN BACK THE PLAT CURVE WAS VERY UNDEFINED SO USED ARC DISTANCES FROM PLAT TO CONTROL CURVE DESIGN

FD: APPEARS TO BE ORIGINAL IRON PIPE

**NARRATIVE**  
 THE SURVEY OF LOTS 7 & 8, BLOCK 1 BIVIEWVIEW ADDITION TO CASCADE LOCKS, THE PLAT BY BUTTON PLS 233 WAS VERY INCOMPLETE WITH MOST MONUMENTS ALONG RIVER VIEW DRIVE HAVING BEEN DESTROYED. THE INITIAL POINT OF THE SUBDIVISION WAS FOUND ALONG WITH THE NE CORNER OF BLOCK 3 AND THE NW CORNER OF BLOCK 2. THE 3 CORNERS WERE USE TOGETHER WITH THE ARC DISTANCE AND DELTA FROM THE PLAT TO DETERMINE THE RADIUS SO BIVIEWVIEW DRIVE'S LOCATION COULD BE DETERMINED. THE IRON PIPE AT THE NW CORNER OF LOT 8 WAS THEN USED TO DETERMINE THE NORTH LINES OF LOT 8 & 7. NO PROPORTIONED DISTANCES WERE USED. ONLY PLAT CALLS.

**BASIS OF BEARING:** ASSUMED SURVEY LOCATED LOTS 7 & 8 BIVIEWVIEW ADDITION TO CASCADE LOCKS, OR IN SEC 12, T2N, R1E, WM.

**LEGEND**  
 • SET 3/8" x 30" IRON ROD WITH CAP  
 ○ FOUND MONUMENT AS NOTED  
 ◊ CALCULATED - NOT SET OR FOUND

**FILED**

DEC 02 1982  
 COUNTY SURVEYOR  
 DEPUTY

REGISTERED PROFESSIONAL LAND SURVEYOR

OREGON  
 JULY 12 1972  
 ROY O. GAYLORD  
 1919

SURVEY FOR  
 GABBY D. CASSIDY & CARROLL TVEIDT  
 CASCADE LOCKS, OR.

TERRA SURVEYING  
 DATE: 4-12-1982  
 SCALE: 1" = 50'  
 PROJECT: 8206  
 P.O. BOX 617, HOOD RIVER, OR.  
 503-386-4531