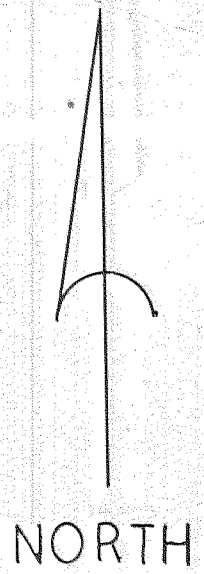
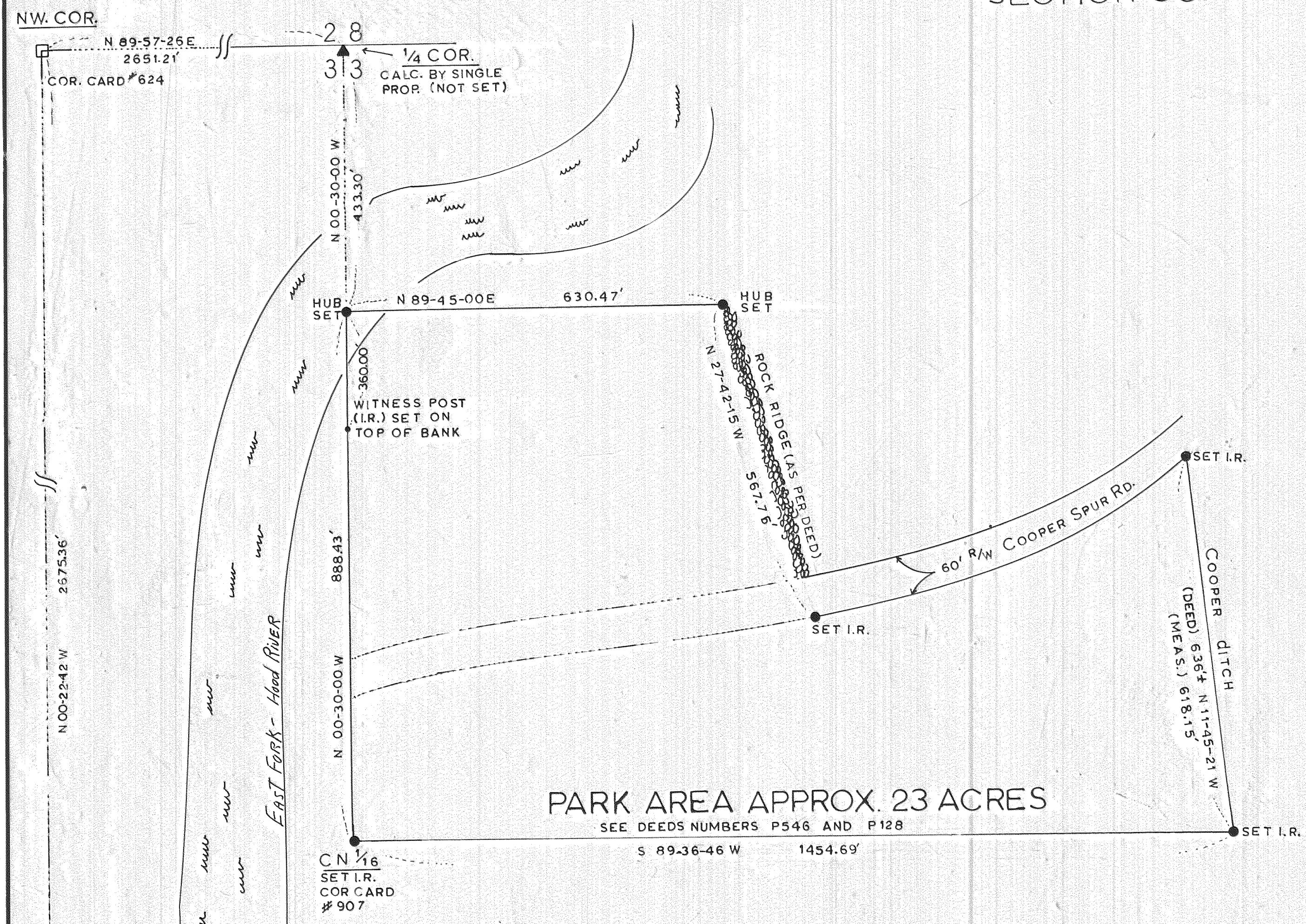


DIMMICK PARK BOUNDARY

T.1N.,R.10E.,W.M.
SECTION 33



81109



NARRATIVE

THIS SURVEY ORIGINATED FROM THE NORTHWEST CORNER AND WEST QUARTER CORNER OF SECTION 33. SINCE ALL CORNERS OF THIS SECTION ARE KNOWN (SEE HRC SURVEY DRAWING #7653) IT WAS POSSIBLE TO CALCULATE AND SET THE CENTER NORTH ONE SIXTEENTH CORNER, PROCEEDING THEN AS PER DEEDS NUMBERED P546 AND P128 WE CONCLUDED THE SURVEY ON THE CENTER NORTH ONE SIXTEENTH, HAVING SET ALL PROPERTY CORNERS.

I, ANTHONY C. KLEIN, REGISTERED LAND SURVEYOR IN THE STATE OF OREGON, HEREBY CERTIFY THAT THIS PLAT AND THE NOTES HEREON ARE A CORRECT REPRESENTATION OF A SURVEY COMPLETED DURING SEPTEMBER, 1981, FOR HOOD RIVER COUNTY FORESTRY DEPARTMENT.

ANTHONY C. KLEIN, REGISTERED LAND SURVEYOR
OREGON LICENSE NO. 932

- LEGEND**
- CORNERS FOUND
 - CORNERS SET (5/8" IRON ROD OR HUB)
 - ▲ COMPUTED CORNER, NOT SET

BASIS OF BEARING
ESTABLISHED FROM THE N.W. CORNER AND WEST 1/4 CORNER OF SECTION 33, T.1N., R.10E., W.M. SEE HRC SURVEY # 7653

FILED
DEC 30 1981
Anthony C. Klein
COUNTY SURVEYOR
DEPUTY

HOOD RIVER COUNTY DEPT. OF PUBLIC WORKS	
DIMMICK PARK BOUNDARY	
DATE: 9/15/81	DESIGN BY: PJH
SCALE: 1" = 150'	CHECKED BY:
SHEET 1 OF 1	DRAWN BY: PJH

81109