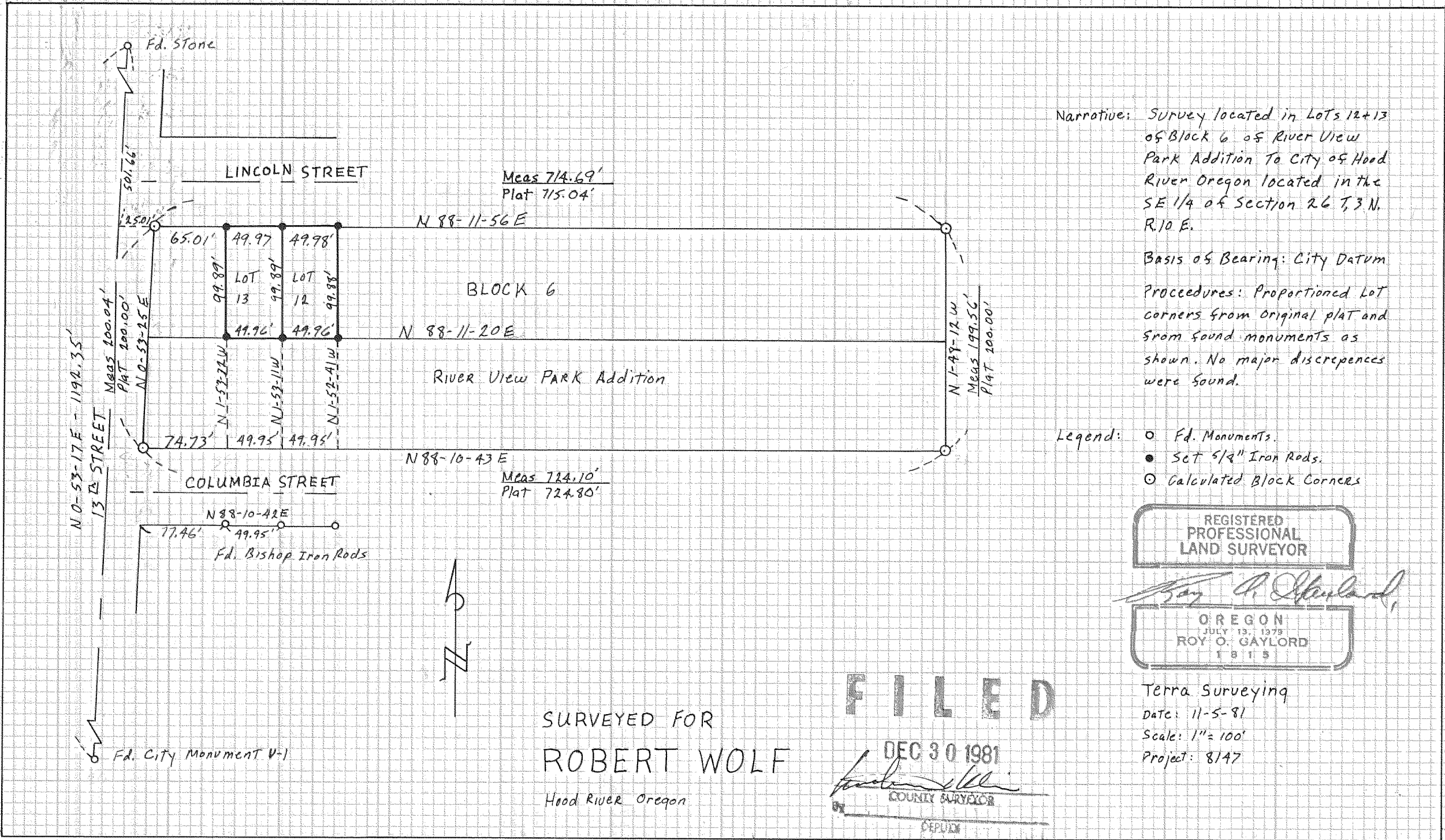


81118



Narrative: Survey located in Lots 12+13 of Block 6 of River View Park Addition To City of Hood River Oregon located in the SE 1/4 of Section 26 T.3 N. R.10 E.

Basis of Bearing: City Datum

Procedures: Proportioned Lot corners from original plat and from found monuments as shown. No major discrepancies were found.

- Legend:
- Fd. Monuments.
  - Sct 5/8" Iron Rods.
  - Calculated Block Corners

REGISTERED  
PROFESSIONAL  
LAND SURVEYOR

*Ray O. Gaylor*

OREGON  
JULY 13, 1979  
ROY O. GAYLORD  
L.S. 15

Terra Surveying

Date: 11-5-81

Scale: 1" = 100'

Project: 8147

SURVEYED FOR  
**ROBERT WOLF**  
Hood River Oregon

**FILED**

DEC 30 1981

*Franklin*  
COUNTY SURVEYOR  
DEPUTY

81107

81107