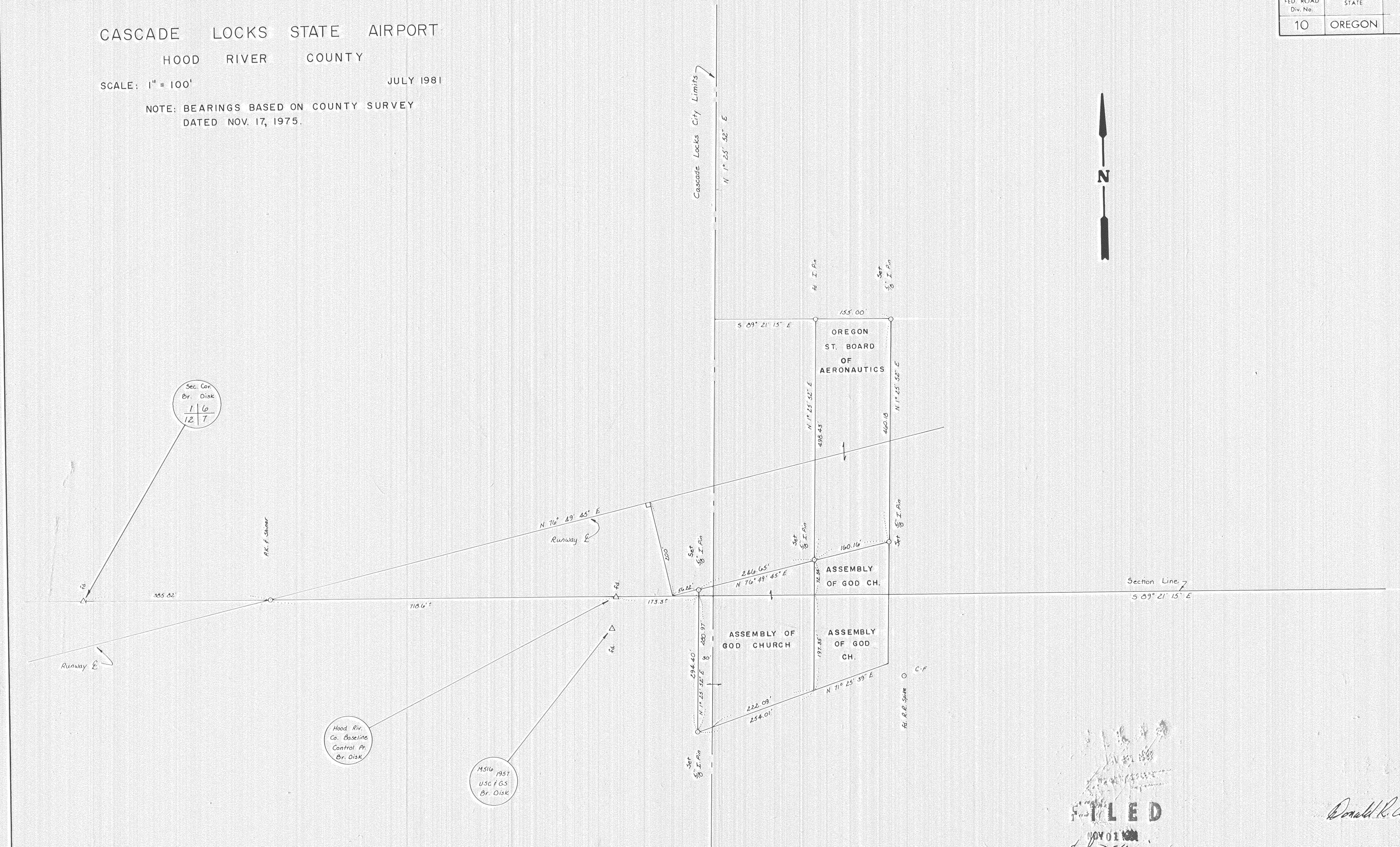


# CASCADE LOCKS STATE AIRPORT HOOD RIVER COUNTY

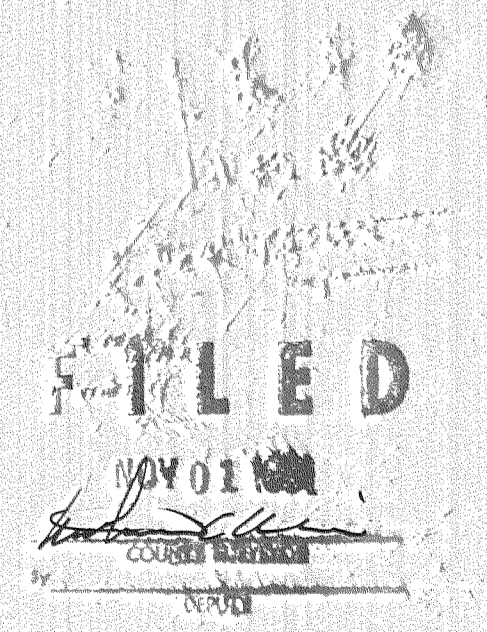
SCALE: 1" = 100' JULY 1981

NOTE: BEARINGS BASED ON COUNTY SURVEY  
DATED NOV. 17, 1975.

FED. ROAD Div. No.	STATE	PROJECT NUMBER	FISCAL YEAR	SHEET No.
10	OREGON			TOTAL SHEETS See Index



81099



Donald R. Adams

T2N, R8E, W.M.

81099