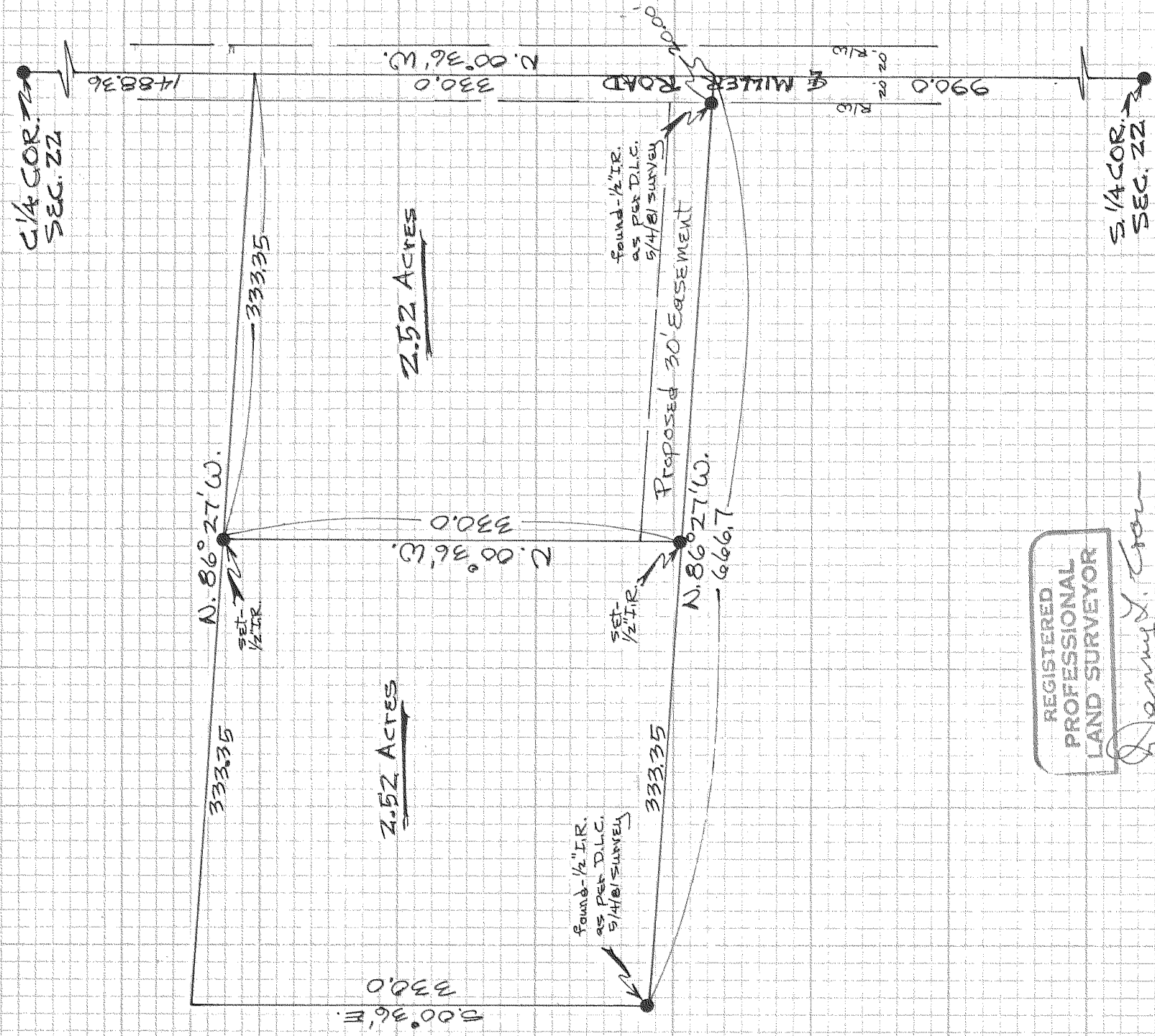


81018

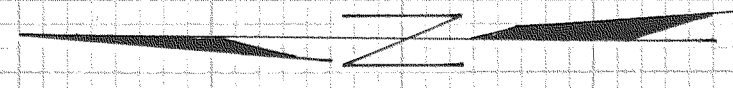


REGISTERED
PROFESSIONAL
LAND SURVEYOR

Danny L. Cron

OREGON
AUGUST 22, 1975
DANNY L. CRON
1028

Oct. 21, 1981



SCALE 1"=100'
BASIS OF BEARING AS PER D.L.C.
5/4/81 SURVEY FOR RHYM

"SURVEY"
FOR - GEORGE COCHRAN
LOCATION - PARCELS LOCATED
in the S.W. 1/4 of SEC. 22,
T.1N., R.10E, W.M. -
HOOD RIVER COUNTY,
OREGON

FILED

NOV 01 1981

George Cochran
COUNTY SHERIFF
DEPUTY

81018