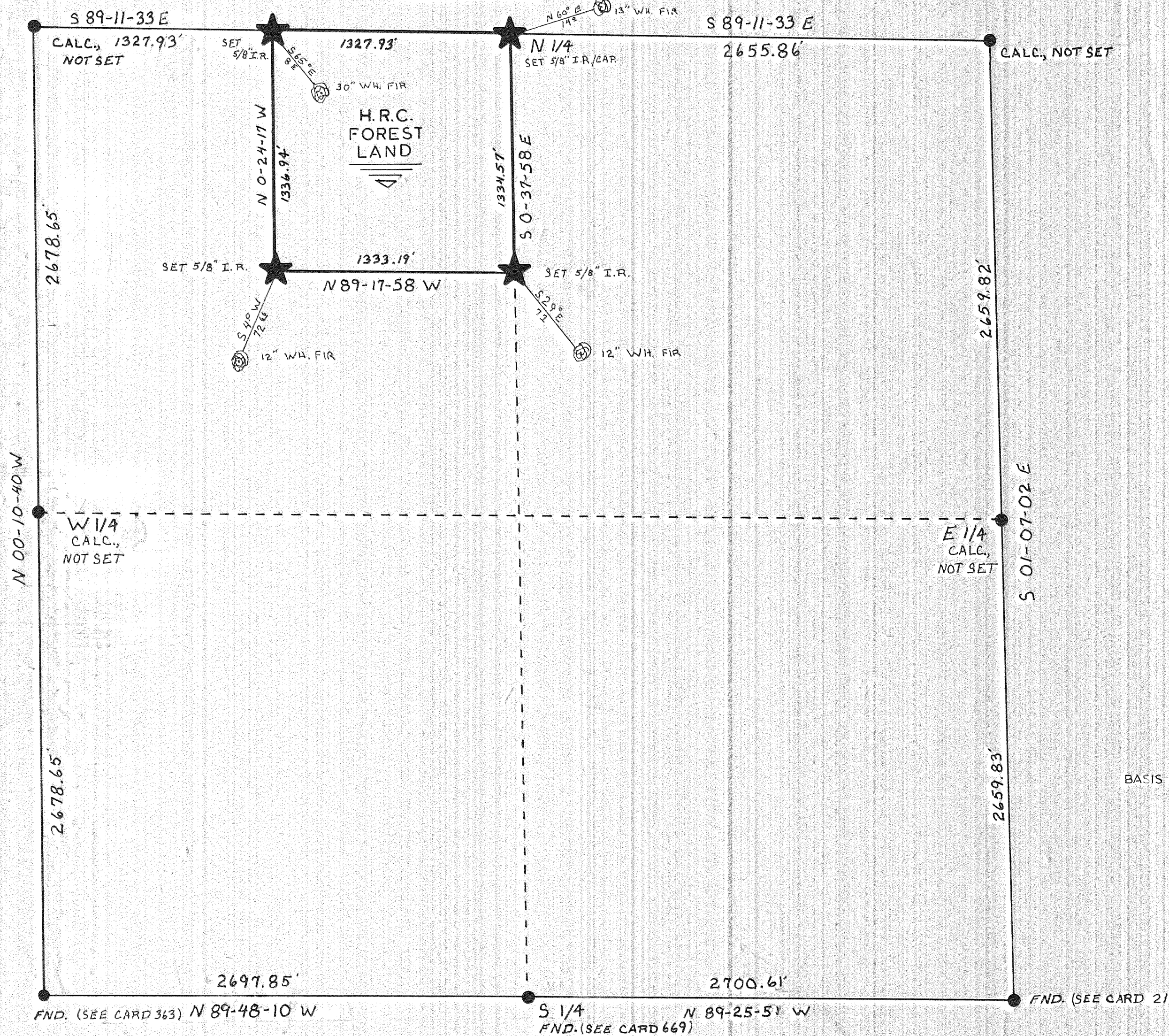


SEC 29, TWP. 1N., R. 11E., W.M.

RESUME

IT WAS DETERMINED THAT SEVERAL CORNERS USED IN A 1975 H.R.C. SURVEY (the nw & ne section corners, the north, west, & east 1/4 corners) OF SECTION 29, T. 1N., R. 11E., W.M. WERE NOT ACCEPTABLE. TO CORRECT THE SURVEY OF H.R.C. FOREST LANDS THE SW & SE SECTION CORNERS WERE CORRELATED WITH A DAN L. CRON SURVEY, WHICH INCLUDED SAID SECTION, AND NEW CORNERS WERE CALCULATED BY PROPORTIONATE METHODS.



BASIS OF BEARING: DAN L. CRON SURVEY # 80000

NOTE:

THIS SURVEY WAS DONE AS A CORRECTION FOR H.R.C. SURVEY # 7561. CALCULATIONS ARE BASED ON DAN L. CRON SURVEY # 80000

CHANGES FROM CORRECTED PROP. COR.'S TO DESTROYED PROP. COR.'S.

N.W. PROP. COR. WAS S 13-20-05 E 104.48'

N 1/4 COR. WAS S 16-43-32 E 67.80'

SW. PROP. COR. WAS S 15-01-10 E 52.74'

S.E. PROP. COR. WAS S 24-15-56 E 33.29'

FILED

NOV 01 1981

COUNTY SURVEYOR

HOOD RIVER COUNTY SURVEY OFFICE

SURVEY OF THE NE 1/4 NW 1/4

SEC. 29, T. 1N., R. 11E., W.M.

DATE: 9/17/81 CHECKED BY:

SCALE: 1" = 500' JOB #

DRAWN BY: Mike Blumenstein

81074

81074