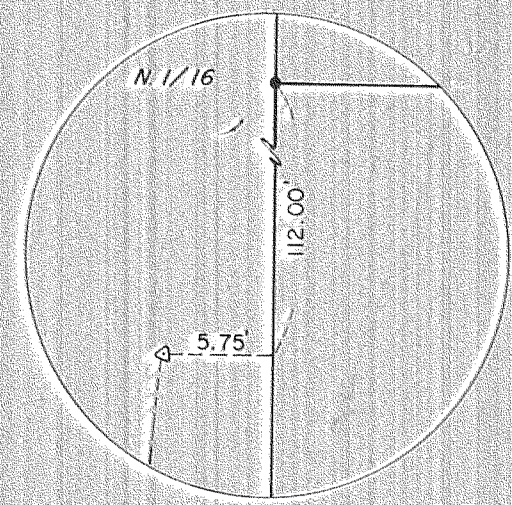
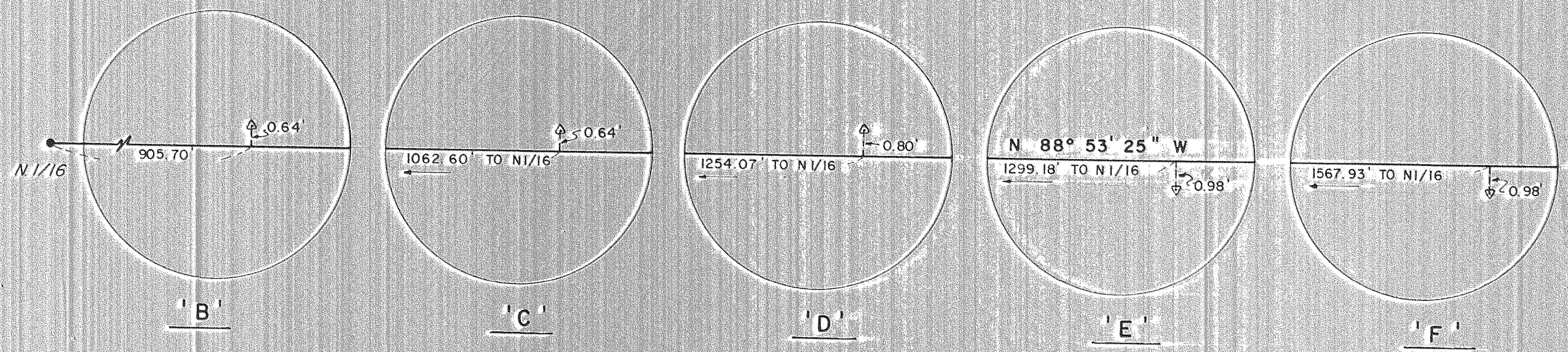




BEARING BASED ON
Solar Observation from
Survey of Hood River Co.
Forest Land, 11-12-75
No. 7574 Job No. 2-75

13 18 N.W. Cor. Section 19
24 19 Fd. Brass Cap.
Hood River Co. 1971
Ref. Hood River Co. Cor.
Card 515

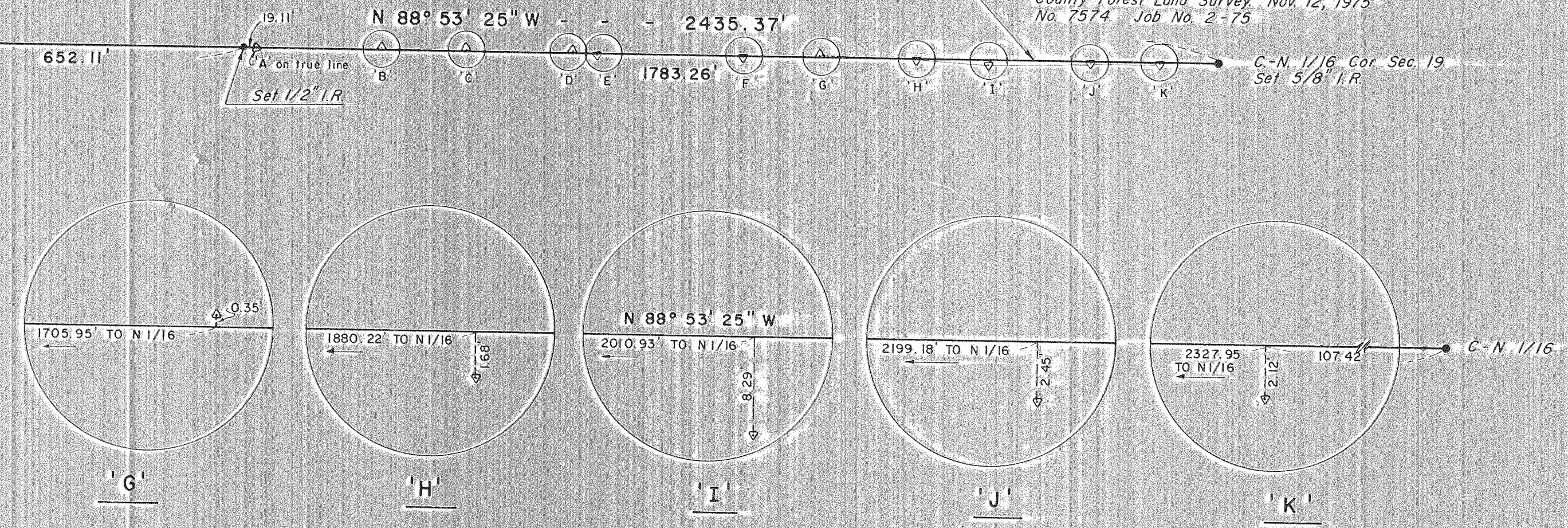


4 DETAIL
NO SCALE

N. 1/16 Corner
Set 5/8" I.R.
(FD. 3/4" I.P.)
S. 11.0' @ E. 4.0'
REF. HOOD RIVER
COUNTY COR.
CARD 482

1337.58'
2675.16'
N 00° 42' 24" E
463.09'
687.27'
30.16'
1337.58'
RANGE 9 E
RANGE 10 E

24 19 W 1/4 Sec. 19
Fd. 3/4" I.P.
Ref. Hood River County
Cor Card 273



NOTE
This Line Established From Hood River
County Forest Land Survey, Nov. 12, 1975
No. 7574 Job No. 2-75

DETAILS
NO SCALE

NOTE
ALL OFFSET POINTS
90° TO TRUE LINE

FILED
JUL 29 1981
DAVID L. TUTTLE
COUNTY SURVEYOR
DEPUTY



Date	No.	Revisions	By	App.
SURVEY FOR ANDY ABRAMS IN THE NW 1/4, SECTION 19 TWP. 1S, RANGE 10E W.M. HOOD RIVER COUNTY, OREGON				
Design	TENNESON ENGINEERING CORP. Consulting Engineers			Scale 1" = 200'
Survey	DAVID L. TUTTLE The Dalles, Oregon			Date 3-13-81
Drawn	S.D.H.	Checked	Work Order No. 6163	Sheet 1 of 1

81071