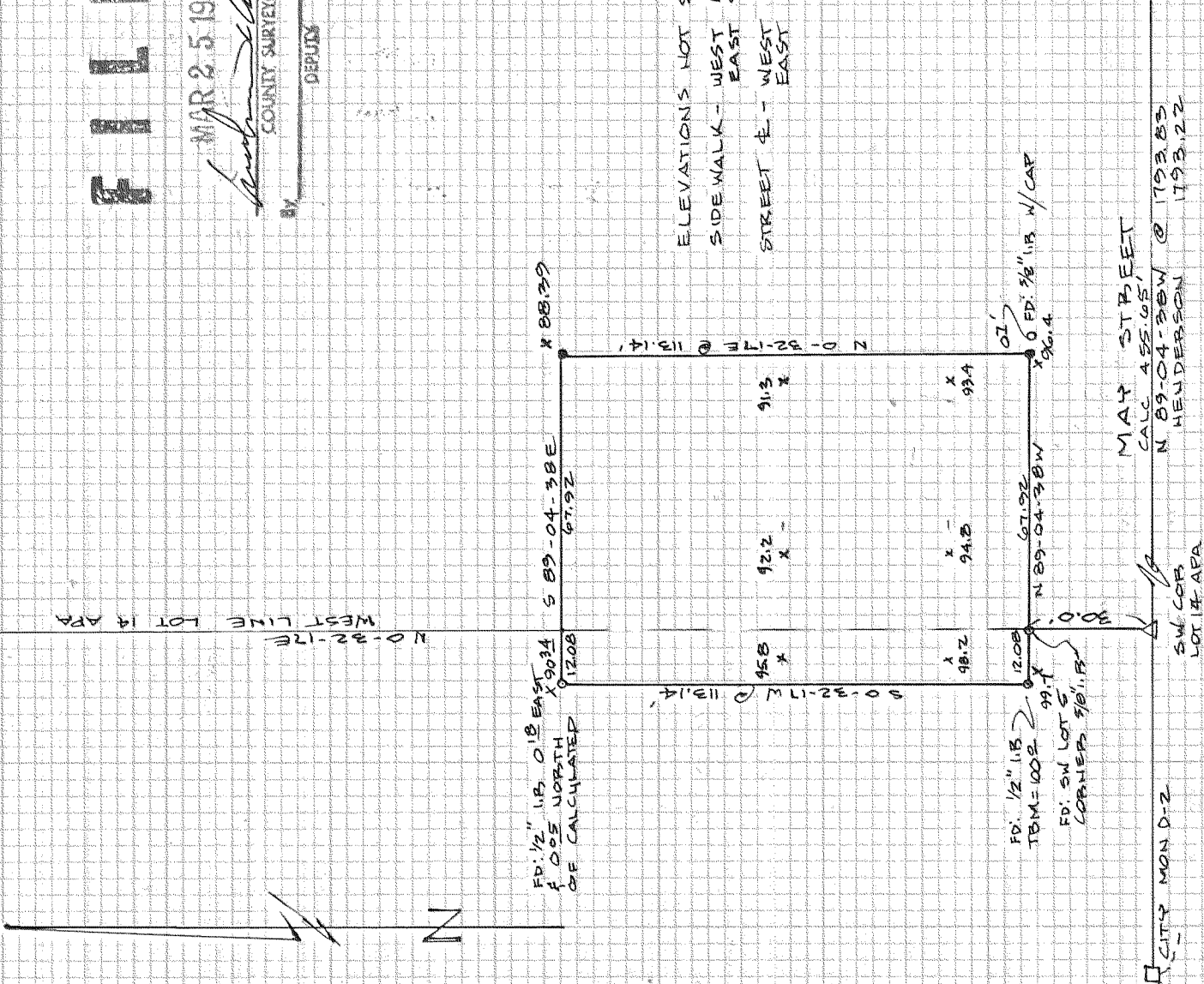


1/4 COR. 76.89
CALC
S 89-08-40 E
SHERMAN AVE



WEST LINE LOT 14 ADA
N 0-32-17 E

FD: 1/2" I.B. 0.18 EAST
F. 0.05 NORTH
OF CALCULATED
12.08

FD: 1/2" I.B. 2.08
TBM=100.2
99.7
FD: SW LOTS
CORNER 9/8" I.B.

ELEVATIONS NOT SHOWN
SIDEWALK - WEST 100.54
EAST 98.56
STREET E - WEST 100.89
EAST 98.94

CITY MON D-2 SW COR. LOT 14 ADA
MAY STREET
CALC 455.05'
N 89-04-30 W @ 1793.85
HENDERSON 1793.22
CITY MON D-1

F I L E D

MAR 25 1981

Ray C. Appford
COUNTY SURVEYOR
DEPUTY

REGISTERED
PROFESSIONAL
LAND SURVEYOR

Ray C. Appford

OREGON
JULY 15, 1978
ROY O. GAYLORD
1818

NARRATIVE
SURVEY WAS BASED ON CITY MONUMENT
INFORMATION.

THE SW CORNER OF LOT 14 ADA WAS
PROPORTIONED ACCORDING TO J.L.
HENDERSON ORIGINAL NOTES.

THE NW CORNER WAS CALCULATED FROM
THE 1/4 CORNER ON SHERMAN STREET
ALONG THE SECTION LINE & HENDERSON'S
CALL DISTANCE

SURVEY LOCATED IN LOT 14 ADAMS
PARADISE ACRES (APA) AND LOTS
4 & 5 BLOCK 3 CHILDS BLOSSOM
HILL ADDITION TO HOOD RIVER.

BASIS OF BEARING: CITY DATUM
ELEVATIONS: ASSUMED SW LOT CORNER LOTS
WAS 100.00.

- o SET 9/8" x 30" IRON ROD
- o FOUND MONUMENT AS NOTED
- o CITY REFERENCE MONUMENT
- o CALCULATED - NOT SET

91015

FOR

DON BETZ
HOOD RIVER, OR.

TERESA SURVEYING

DATE: 1-21-1981
SCALE: 1" = 40'
PROJECT: 8057