

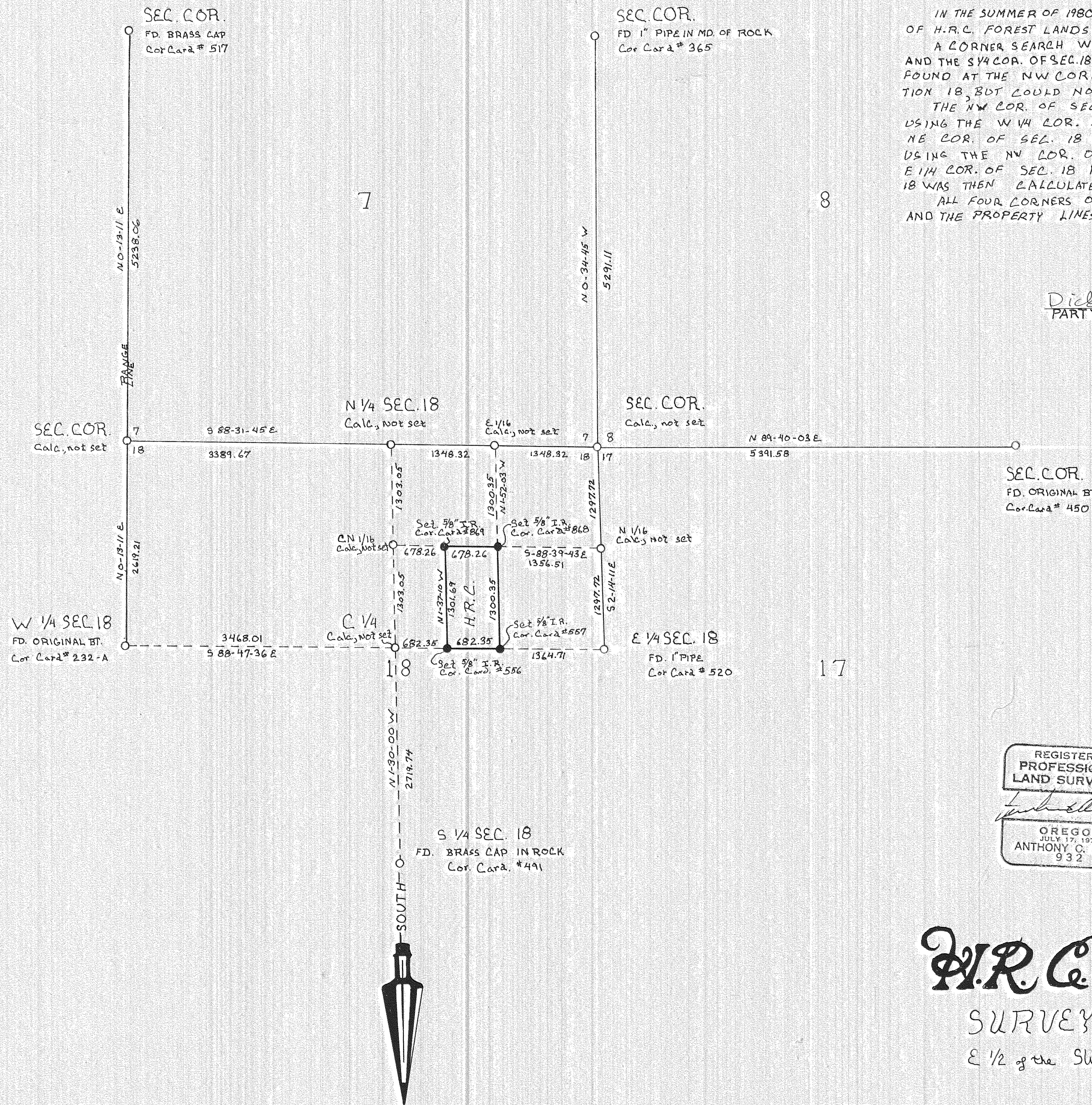
# RESUME'

IN THE SUMMER OF 1980 THE H.R.C. FORESTRY DEPT. REQUESTED A SURVEY OF H.R.C. FOREST LANDS IN THE NE 1/4 OF SEC. 18, T1N, R11E W.M. A CORNER SEARCH WAS BEGUN, AND THE W 1/4 COR., THE E 1/4 COR., AND THE SW COR. OF SEC. 18 WERE FOUND AND ACCEPTED. CORNERS WERE ALSO FOUND AT THE NW COR., THE NE COR., AND THE N 1/4 COR. OF SECTION 18, BUT COULD NOT BE SUBSTANTIATED.

THE NW COR. OF SECTION 18 WAS CALCULATED BY SINGLE PROPORTION, USING THE W 1/4 COR. SEC. 18 AND THE NW SEC. COR. OF SEC. 7. THE NE COR. OF SEC. 18 WAS THEN CALCULATED BY DOUBLE PROPORTION, USING THE NW COR. OF 18 AND THE NE COR. OF SEC. 17, AND THE E 1/4 COR. OF SEC. 18 AND THE NE COR. OF SEC. 7. THE N 1/4 OF SEC. 18 WAS THEN CALCULATED BY SINGLE PROPORTION.

ALL FOUR CORNERS OF THE E 1/2 OF THE SW 1/4 OF THE NE 1/4 WERE SET, AND THE PROPERTY LINES WERE BLAZED ON TRUE LINE.

*Dick Arnold*  
PARTY CHIEF



REGISTERED  
PROFESSIONAL  
LAND SURVEYOR

*Anthony Q. Klein*  
OREGON  
JULY 17, 1970  
ANTHONY Q. KLEIN  
932

FILED

MAR 25 1981  
*Anthony Q. Klein*  
COUNTY SURVEYOR  
DEPUTY

# W.R.C. SURVEY DEPT.

## SURVEY FOR HOOD RIVER CO.

E 1/2 of the SW 1/4 of the NE 1/4, SEC. 18, T1N R11E W.M.

DATE: 2/81  
SCALE: 1"=1000'  
DRAWN BY: Mike Blumentritt  
CHECKED BY: R.S.A.  
DRAWING #81011