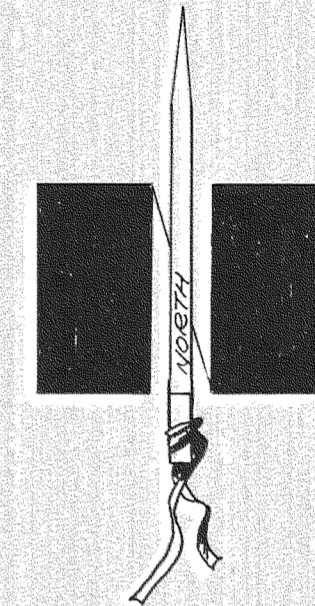
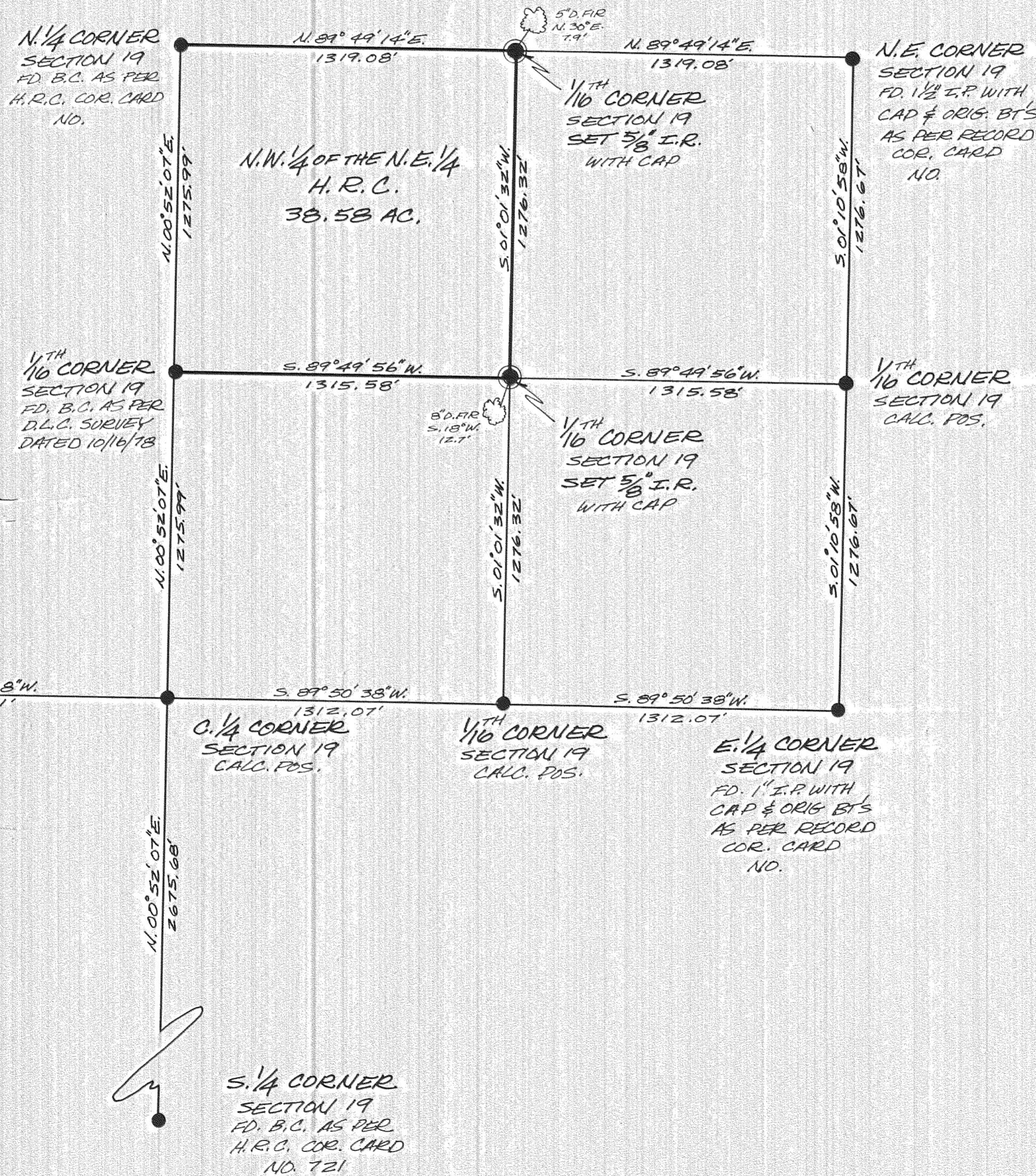
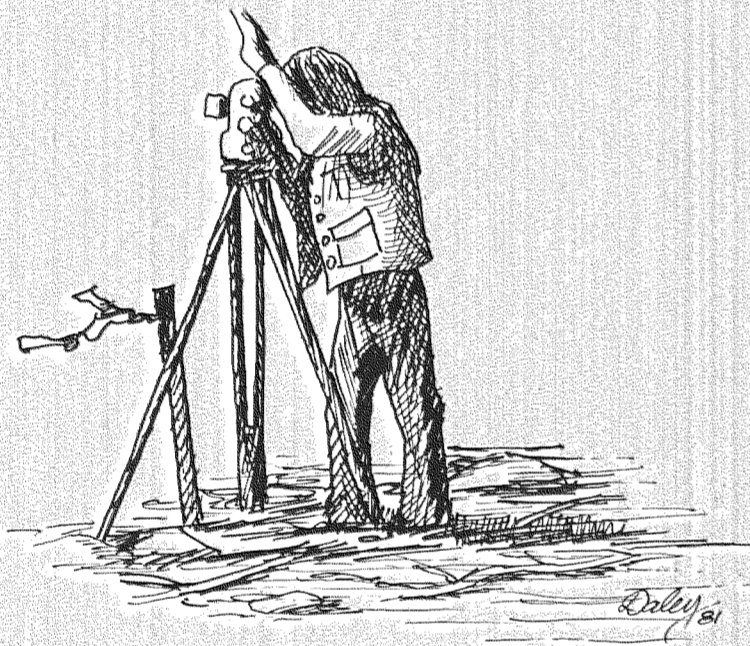


Resume

IN THE WINTER OF 1981, THE H.R.C. SURVEY DEPT. PERFORMED A SURVEY OF THE N.W. 1/4 OF THE N.E. 1/4 OF SECTION 19, T.1N., R.11E., W.M. THE PURPOSE OF THE SURVEY WAS TO DETERMINE THE BOUNDARY LINES OF THE H.R.C. FOREST LANDS IN SAID SECTION.

THE N. 1/4 CORNER, S. 1/4 CORNER, E. 1/4 CORNER, AND THE N.E. SECTION CORNER OF SEC. 19 WERE ALL FOUND AND ACCEPTED. THE W. 1/4 CORNER COULD NOT BE FOUND, SO ITS POSITION WAS DETERMINED FROM A 1978 SURVEY BY DAN CRON (H.R.C. DRAWING NO. 79002). ALL THESE CORNERS WERE TIED WITH A FIELD TRAVERSE, AND THE E. 1/16TH AND THE N.E. 1/16TH WERE SET. THE C.N. 1/16TH HAD BEEN SET BY DAN CRON, AND ITS POSITION WAS DETERMINED TO BE CORRECT. THE NORTH, EAST, AND SOUTH LINES OF THE N.W. 1/4 OF THE N.E. 1/4 WERE THEN BLAZED ON TRUE LINE. THE SURVEY WAS COMPLETED IN FEB. OF 1981.

Dick Arnold
PARTY CHIEF



SCALE 1" = 400'
BASIS OF BEARING AS PER
D.L.C. SURVEY DATED 10/16/78

filed

3/24/81
Anthony C. Klein
COUNTY SURVEYOR

REGISTERED
PROFESSIONAL
LAND SURVEYOR

Anthony C. Klein

OREGON
JULY 17, 1970
ANTHONY C. KLEIN
932

HRC
Survey Dept.

N.W. 1/4 OF THE N.E. 1/4, SECTION 19,
T. 1 N., R. 11 E., W.M.
HOOD RIVER COUNTY, OREGON

DATE 3/24/81 DRAWN BY Daley
SCALE 1" = 400' DRAWING NO. 81008