



IN SEPTEMBER OF 1980 THE H.R.C. SURVEY DEPT. BEGAN A SURVEY TO ESTABLISH THE CORNERS OF GOVT. LOTS 1 & 2 IN SECTION 31, T.1N., R.9E., W.1M. THIS SURVEY WAS PERFORMED AT THE REQUEST OF THE H.R.C. FORESTRY DEPT. IN ORDER TO DETERMINE THE BOUNDARIES OF H.R.C. FOREST LANDS.

A CORNER SEARCH WAS BEGUN, AND THE N.W., S.W. & S.E. SECTION CORNERS OF SECTION 31 WERE ALL FOUND AND ACCEPTED. THE WEST QUARTER CORNER AND THE SOUTH QUARTER CORNER WERE ALSO FOUND AND ACCEPTED. THE N.E. CORNER AND THE EAST QUARTER CORNER WERE NOT FOUND, AND A 1 1/2" IRON PIPE WAS FOUND AT THE NORTH QUARTER CORNER, BUT NO EVIDENCE WAS FOUND TO SUPPORT ITS POSITION.

IT WAS THEN DECIDED TO SET THE N.E. CORNER OF SECTION 31 BY DOUBLE PROPORTIONATE METHODS. A THOROUGH SEARCH TO THE EAST OF THIS SECTION CORNER WAS BEGUN, AND NO EVIDENCE OF ANY CORNER WAS FOUND CLOSER THAN THE NORTH QUARTER CORNER OF SECTION 34, WHICH HAD BEEN SET BY THE H.R.C. SURVEY DEPT. IN 1970.

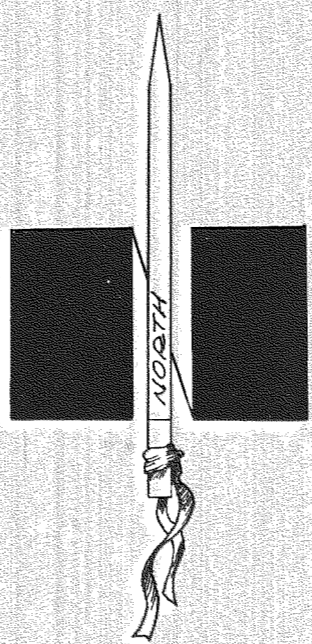
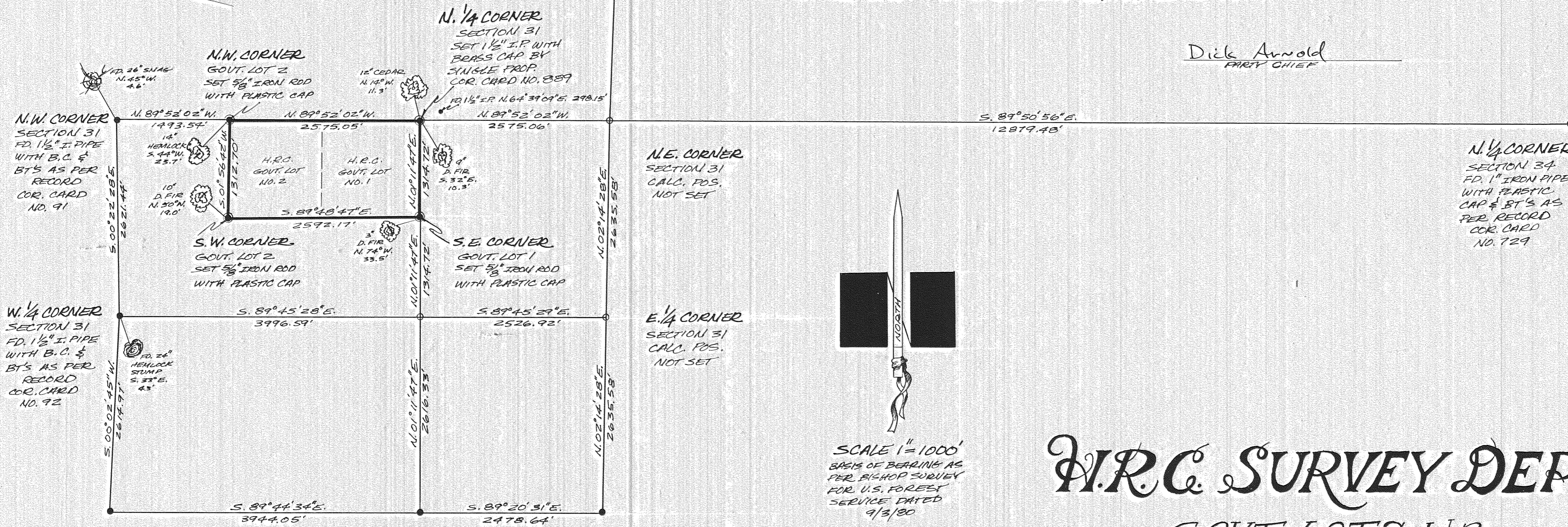
A SEARCH FOR CORNERS TO THE NORTH OF SAID SECTION CORNER WAS THEN BEGUN. THE QUARTER CORNER 1/2 MILE TO THE NORTH WAS NOT FOUND, BUT THE SECTION CORNER TO SECTIONS 19, 20, 30 & 29 WAS FOUND AND ACCEPTED.

THE N.E. CORNER OF SECTION 31 WAS THEN CALCULATED BY DOUBLE PROPORTIONATE METHODS, AND AN EXTENSIVE SEARCH FOR THE ORIGINAL MONUMENTS PRODUCED NO EVIDENCE.

THE NORTH QUARTER CORNER OF SECTION 31 WAS THEN SET BY SINGLE PROPORTION. THIS QUARTER CORNER BEARS S. 64° 39' 09" W., 298.15 FROM THE 1 1/2" IRON PIPE MENTIONED ABOVE.

THE N.W. AND S.W. CORNERS OF GOVT. LOT 2 & THE S.E. CORNER OF GOVT. LOT 1 WERE THEN SET. THE EAST, WEST AND SOUTH LINES OF THE H.R.C. FOREST LANDS WERE THEN BLAZED ON TRUE LINE. THE SURVEY WAS COMPLETED IN OCT. OF 1980.

Dick Arnold
PARTY CHIEF



SCALE 1" = 1000'
BASIS OF BEARING AS PER SISHOP SURVEY FOR U.S. FOREST SERVICE DATED 9/3/80

FILED

FEB. 5, 1981
Anthony C. Klein
COUNTY SURVEYOR

REGISTERED PROFESSIONAL LAND SURVEYOR

OREGON
JULY 17, 1970
ANTHONY C. KLEIN
932

H.R.C. SURVEY DEPT.

GOVT. LOTS 1 & 2
T.1N., R.9E., W.1M., SECTION 31
HOOD RIVER COUNTY, OREGON

DATE: 2/5/81 CHECKED BY: D.A.
SCALE: 1" = 1000' DRAWN BY: L.H. Daley
SHEET: I OF I DRAWING NO. 81006

SURVEY PARTY
DICK ARNOLD, L.H. DALEY, M. BLUMENSTEIN