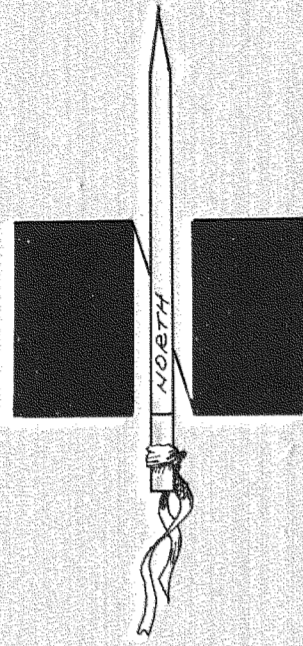


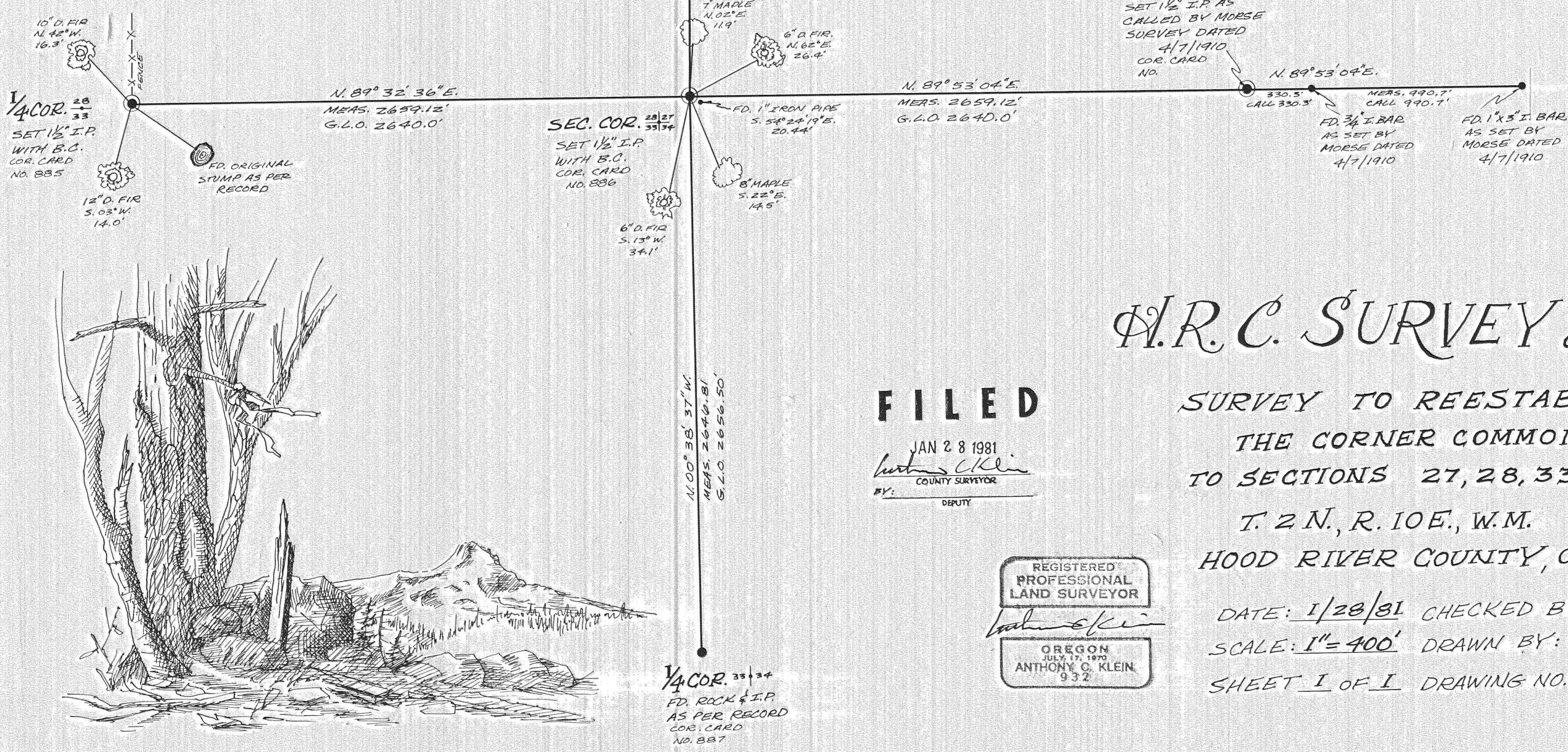
# RESUME

IN JANUARY OF 1981, THE H.R.C. SURVEY DEPT. BEGAN A SURVEY TO REESTABLISH THE CORNER COMMON TO SECTIONS 27, 28, 33 & 34 IN TWP. 2N., R. 10E., W.M. THE 1" I.P. FOUND AT THIS CORNER HAD NEVER BEEN RECORDED OR PERPETUATED, AND IT WAS DECIDED TO RESET THE CORNER BY DOUBLE PROPORTIONATE METHODS. AFTER EXTENSIVE RESEARCH IN THE FILES OF THE H.R.C. SURVEY DEPT. A SEARCH WAS BEGUN FOR CORNERS TO THE NORTH, SOUTH, EAST & WEST OF SAID SECTION CORNER. THE QUARTER CORNER COMMON TO SECTIONS 27 & 28, AND THE QUARTER CORNER COMMON TO SECTIONS 33 & 34 WERE BOTH FOUND AND ACCEPTED AS BEING CORRECT. THE QUARTER CORNER COMMON TO SECTIONS 27 & 34 WAS RESET FROM TWO IRON BARS SET BY P.M. MORSE IN 1910. (SEE DRAWING) THE QUARTER CORNER COMMON TO SECTIONS 28 & 33 WAS RESET FROM A STUMP BELIEVED TO BE AN ORIGINAL G.L.O. BT. THE REMAINS OF AN OLD FENCE CORNER WERE ALSO FOUND TO FIT THE STUMP THIS FENCE CORNER AND STUMP WERE MENTIONED IN J.L. HEALDERSON'S NOTES, BOOK NO. 124, DATE 1907. ALL FOUR QUARTER CORNERS WERE THEN TIED TOGETHER IN A FIELD TRAVERSE, AND THE POSITION OF THE SECTION CORNER WAS CALCULATED TO BE N. 54° 24' 19" W., 20.44 FEET FROM THE 1" I.P. AN EXHAUSTIVE SEARCH OF THE AREA PRODUCED NO EVIDENCE OF THE ORIGINAL CORNER OR ITS BEARING TREES. A 1/2" I.P. WITH BRASS CAP WAS SET, AND FOUR BEARING TREES WERE BLAZED AND SCRIBED.

Dick Arnold  
PARTY CHIEF



SCALE 1" = 400'  
ASSUMED BASIS OF BEARING



# H.R.C. SURVEY DEPT.

SURVEY TO REESTABLISH  
THE CORNER COMMON  
TO SECTIONS 27, 28, 33 & 34  
T. 2 N., R. 10 E., W.M.  
HOOD RIVER COUNTY, OREGON

DATE: 1/28/81 CHECKED BY: Dick A.  
SCALE: 1" = 400' DRAWN BY: L.A. Daley  
SHEET I OF I DRAWING NO. 81005

FILED

JAN 28 1981  
Anthony C. Klein  
COUNTY SURVEYOR  
DEPUTY

REGISTERED  
PROFESSIONAL  
LAND SURVEYOR

OREGON  
JULY 17, 1970  
ANTHONY C. KLEIN  
932