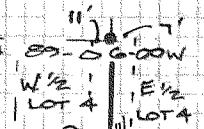


LINCOLN STREET

NARRATIVE  
 BLOCK PORTION BASED ON J.L. HENDERSON  
 RESURVEY OF IDLEWILD ADDITION.  
 SURVEY IN LOTS 10 & 11, BLOCK 11.  
 BASIS OF BEARING WAS CITY OF HOOD RIVER  
 LEGEND

- FOUND MONUMENT
- SET 3/8" X 30" IRON ROD
- △ CALCULATED, NOT SET

BLOCK 11



COLUMBIA STREET

SURVEY FOR  
 BILLIE DOKE  
 HOOD RIVER, OR.

#30090

3N1026DC

TERRA SURVEYING  
 DATE: 8-25-1980  
 SCALE: 1" = 50'  
 PROJECT: 8044

FILED

SEP 18 1980

COUNTY SURVEYOR

DEPUTY

REGISTERED  
 PROFESSIONAL  
 LAND SURVEYOR

*Roy O. Gaylord*

OREGON  
 JULY 13, 1979  
 ROY O. GAYLORD  
 1915

FD CORNER OF  
 BISHOP SURVEY  
 BY CALCULATION  
 260.22  
 60'  
 FD BLOCK  
 CORNER  
 -O ACCEPTED

3/4" IRON PIPE  
 FD: ORIGINAL  
 HENDERSON  
 CORNER.  
 SET 1.8 ON  
 TOP - USE  
 PIPE & NOT  
 ROD FOR  
 CORNER.

FD 1/2" PIPE  
 ACCEPTED AS  
 BLOCK CORNER

N 0-51-58 @ 198.10  
 PLAT 200.00  
 17 1/4" STREET

