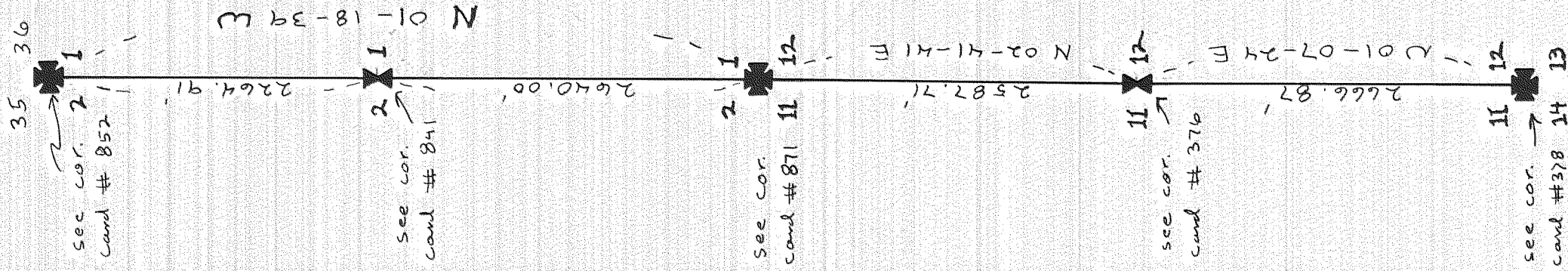




Basis of Bearing
Assumed



Resume'

All corners shown were found and accepted except the '14 cor. between 2-11. This corner was set by single proportion. A closed traverse was run the entire two miles, and U.S.F.S. signs # "54-2a" were set on true line approx. every 5 chains. Trees were also blazed along the entire two miles. See H.R.C. corner card file for detailed corner information. The survey was completed in August, 1979.

Dick Arnold,
Party Chief

FILED

JUN 23 1980

Anthony C. Klein
COUNTY SURVEYOR
DEPUTY

REGISTERED
PROFESSIONAL
LAND SURVEYOR

Anthony C. Klein
OREGON
JULY 17, 1970
ANTHONY C. KLEIN
932

HOOD RIVER COUNTY DEPT. OF PUBLIC WORKS

"U.S.F.S. Coop Survey"
Secs. 1 & 12
T. 2 N R. 9 E

DATE: June 1980	DESIGN BY: RJA
SCALE: 1" = 1000'	CHECKED BY: RJA
SHEET 1 OF 1	DRAWN BY: RJA