

ROCKY ROAD SURVEY

ROCKY ROAD SURVEY

6-80 R.J.A.
 AS NOTED R.J.A.
 1 1 S.M.T.

REVISION 1983

IN 1981, TWO 2" IRON PIPES WERE FOUND NEAR THE E 1/4 CORNER OF SECTION 34. THESE TWO PIPES WERE SET AS REFERENCES TO THE ORIGINAL STONE. AS A RESULT, THE POSITION OF THE 1/4 CORNER MOVED 3.80' EAST OF THE POSITION USED IN THIS 1980 SURVEY. THE REVISED BEARINGS AND DISTANCES ARE SHOWN ON THIS PLAT.

Dick Arnold
 COUNTY SURVEYOR

BASIS OF BEARING
 HRC AERIAL CONTROL SURVEY 1979.
 COMBINED GRID FACTOR
 .9999137

RESUMÉ

IN THE SUMMER OF 1979, THE HOOD RIVER COUNTY DEPARTMENT OF PUBLIC WORKS REQUESTED A SURVEY IN SECTION 34 TOWNSHIP 3 NORTH RANGE 10 EAST W.M., IN ORDER TO DETERMINE THE RIGHT-OF-WAY OF ROCKY ROAD.

ALL FOUR 1/4 CORNERS AND THE N.E. SECTION CORNER OF SECTION 34 WERE TIED TOGETHER IN A FIELD TRAVERSE. THE NE 1/16, THE N 1/16 34 35, AND THE 1/64 CORNER BETWEEN THE TWO 1/16THS WERE ALSO TIED IN. THESE THREE CORNERS, ALL ON THE CENTERLINE OF MAY DRIVE WERE FOUND TO FIT J.L.HENDERSON'S PLAT OF HENDERSON'S SUBDIVISION (1905) ALMOST PERFECTLY. THE 1/64TH CORNER IS SHOWN ON J.L.HENDERSON'S PLAT AS BEING THE BEGINNING POINT OF THE ROAD, AND THE 1/64 CORNER BETWEEN THE CE 1/16 AND THE E 1/4 CORNER WAS SHOWN AS THE END POINT OF THE ROAD. A STRAIGHT LINE WAS CALCULATED BETWEEN THE TWO 1/64 CORNERS, AND THIS WAS USED AS THE CENTERLINE OF ROCKY ROAD. STAKES WERE SET 20' EAST AND WEST OF THE CENTERLINE TO MARK THE RIGHTWAY.

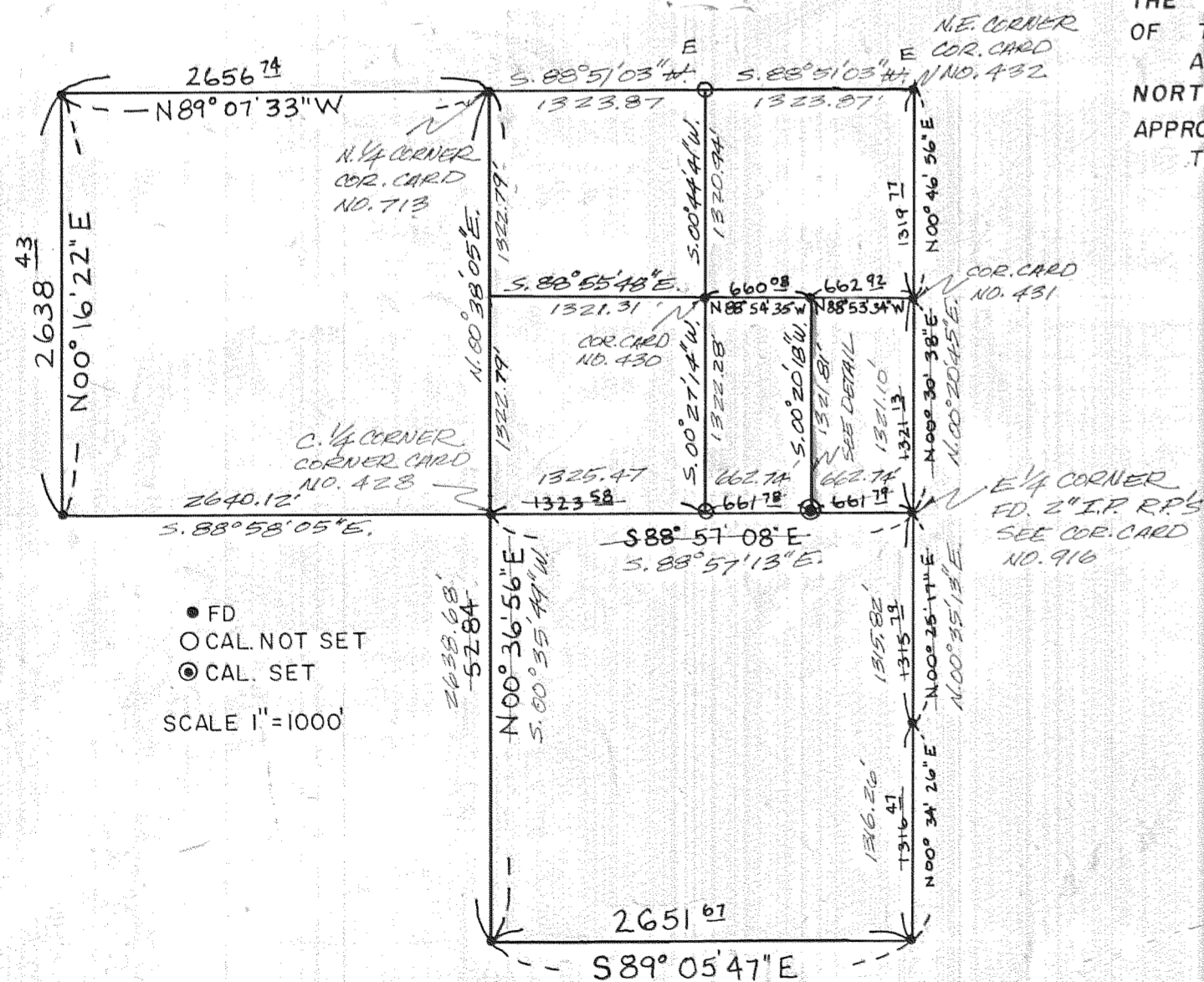
A TWO STORY GARAGE ON THE WEST SIDE OF THE ROAD NEAR ITS NORTH END WAS FOUND TO BE ENCROACHING ON THE RIGHT-OF-WAY BY APPROXIMATELY 10'.

THE SURVEY WAS COMPLETED IN THE FALL OF 1979.

Dick Arnold

DICK ARNOLD
 PARTY CHIEF

SEC 34 T3N R10E W.M.



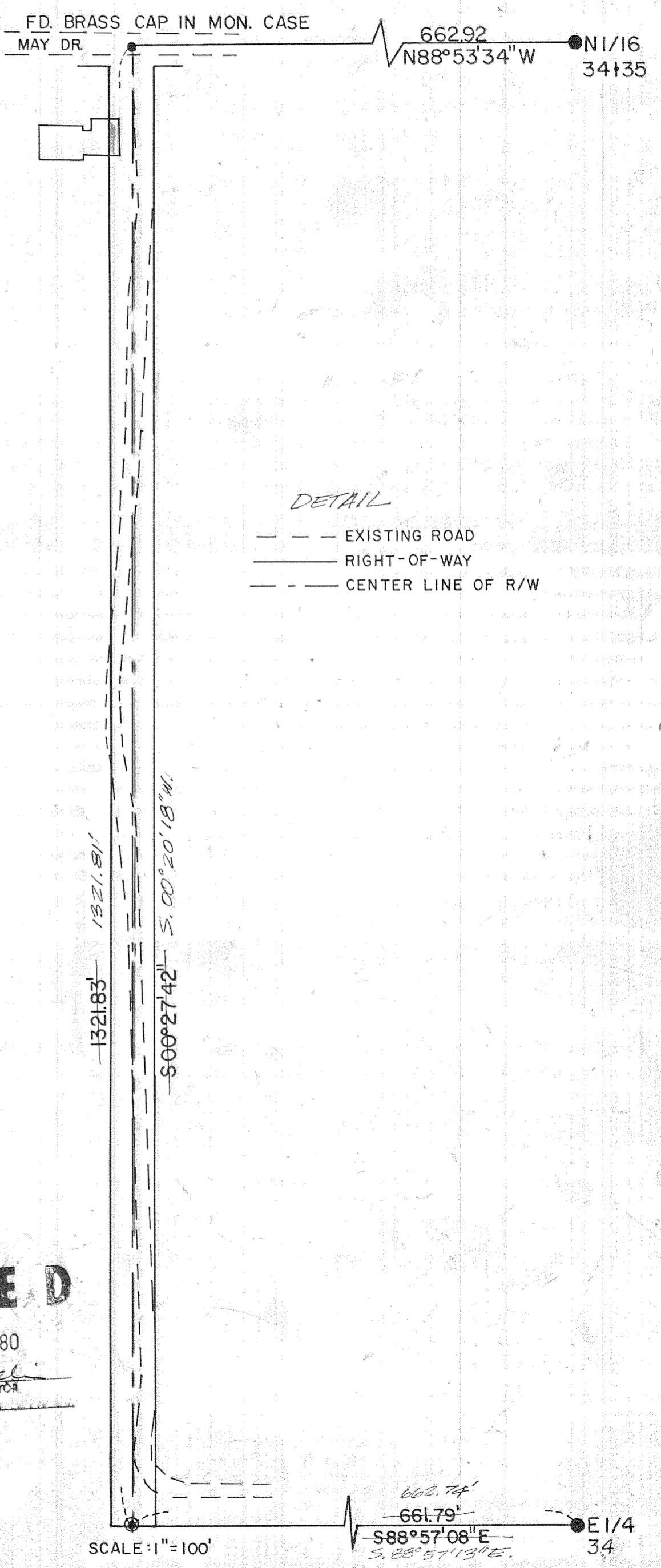
REGISTERED
 PROFESSIONAL
 LAND SURVEYOR

Anthony C. Klein

OREGON
 JULY 17 1970
 ANTHONY C. KLEIN
 932

FILED

JUL 16 1980
Anthony C. Klein
 COUNTY SURVEYOR



SCALE: 1"=100'

E 1/4
 34

80063