

Preliminary Plot
Lot 1

MT. HOOD ESTATES

in
West 1/2 of East 1/2 & SW 1/4

Section 4

T15. R. 10 E

Hood River Co. Oregon
completed May 23, 1980

by: **CHARLES E. REYNOLDS**
5319 N.E. 250
PORTLAND, ORE. 97211

FILES

ULI 12380
Charles E. Reynolds
COUNTY SURVEYOR

DEPUTY

Legend

- - Set Iron pipe
- - COR. Man. Ed

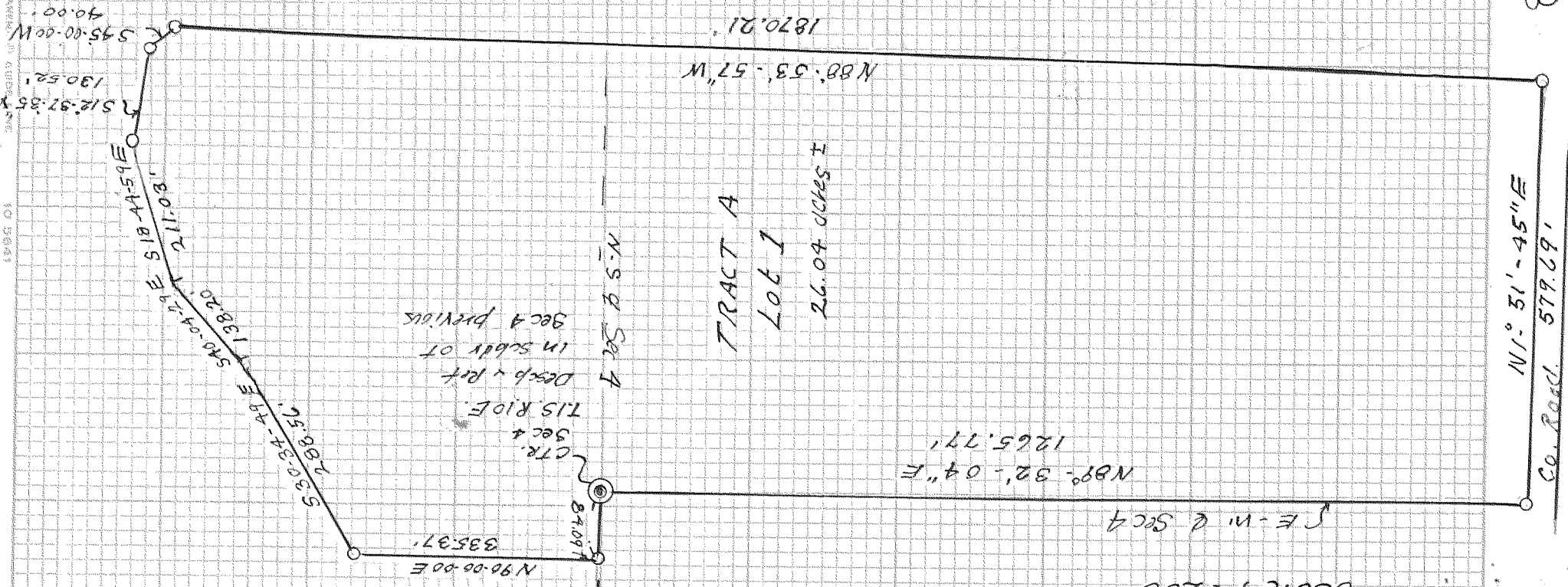
Note - All Iron pipe f 60
OR SET 2" x 3/4"
Galv. IRON



REGISTERED
PROFESSIONAL
LAND SURVEYOR

Charles E Reynolds

CHARLES E. REYNOLDS
334



Co. Road. 579.69'.
N11° 51' - 45" E

80060