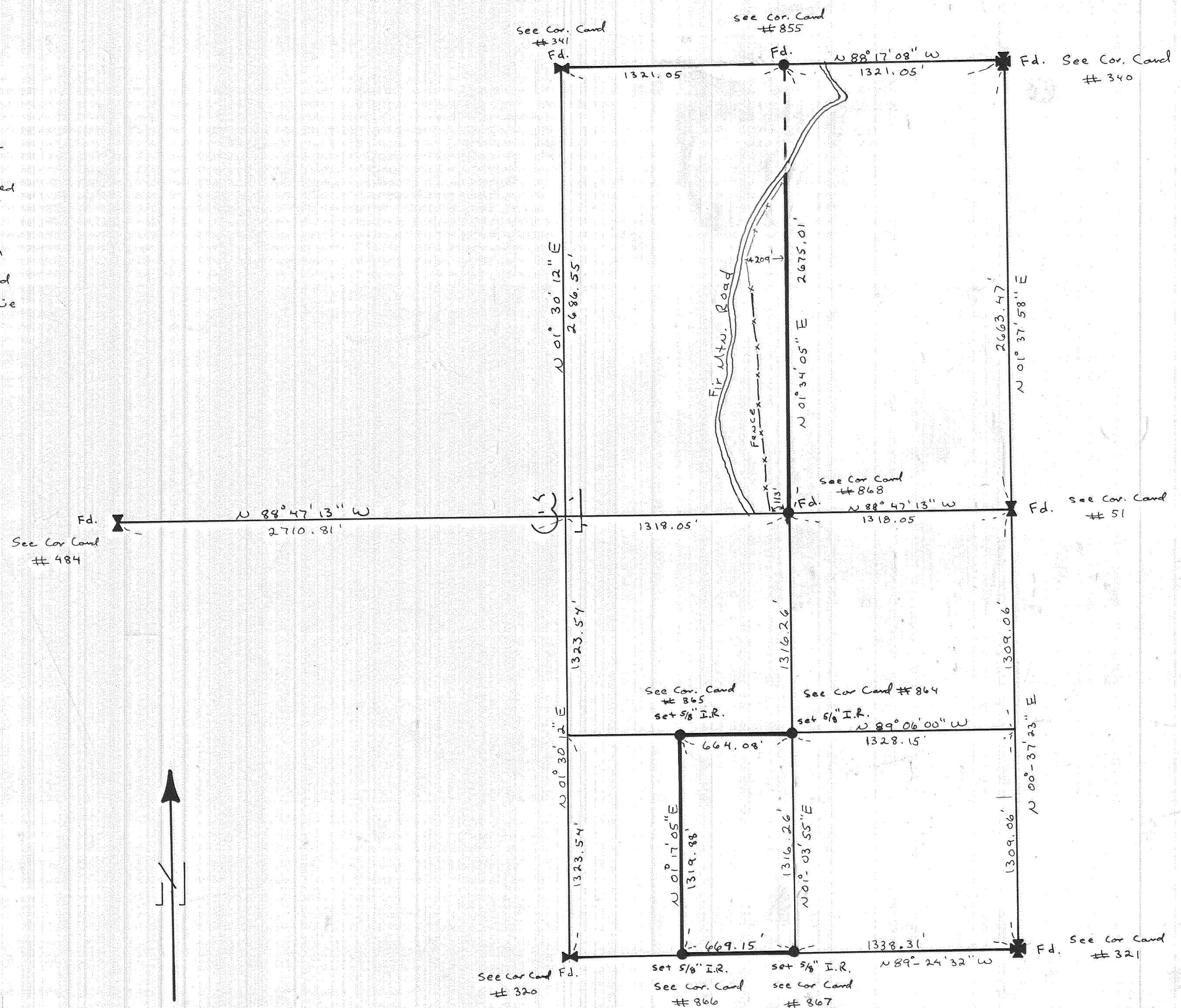


In March, 1980 the Hood River County Forestry Dept. requested a survey of several property lines in Section 31, Township 2 North Range 11 East. All four quarter corners and the N.E. section corner had previously been tied together in a survey by the H.R.C. survey dept. in 1978. The center east 1/16 corner was set at that time, and the east 1/16 corner between sections 30 and 31 was set at approximately the same time by Dan Crisp. The positions of these two 1/16 corners was checked and found to be correct. The original rock and 3 bearing trees were found at the S.E. section corner and a 1 1/2" I.R. with an aluminium cap was set alongside the rock. This corner was then tied into the 1978 survey. The SE 1/16 and the E 1/16 between sections 31 were then set, along with two property corners in the SE 1/4. Approximately one mile of property lines were then blazed (see heavy dark lines on this plat). A fence between Fir Mtn. Road and the N-S centerline of the NE 1/4 was found to be encroaching on H.R.C. Forest land by as much as 209' (see drawing). The survey was completed in April, 1980.

Dick Anwald,  
Party Chief



↑  
Basis of Bearing:  
Assumed

REGISTERED  
PROFESSIONAL  
LAND SURVEYOR  
*Anthony C. Klein*  
OREGON  
JULY 17, 1970  
ANTHONY C. KLEIN  
932

HOOD RIVER COUNTY  
DEPT. OF PUBLIC WORKS  
Survey for H.R.C. Forestry  
Department.  
in  
Sec. 31 T.2N R.11E  
DATE: 4-14-80 DESIGN BY:  
SCALE: 1"=500' CHECKED BY:  
SHEET 1 OF 1 DRAWN BY: RSA

FILED  
APR 21 1980  
*Anthony C. Klein*  
COUNTY SURVEYOR  
DEPUTY