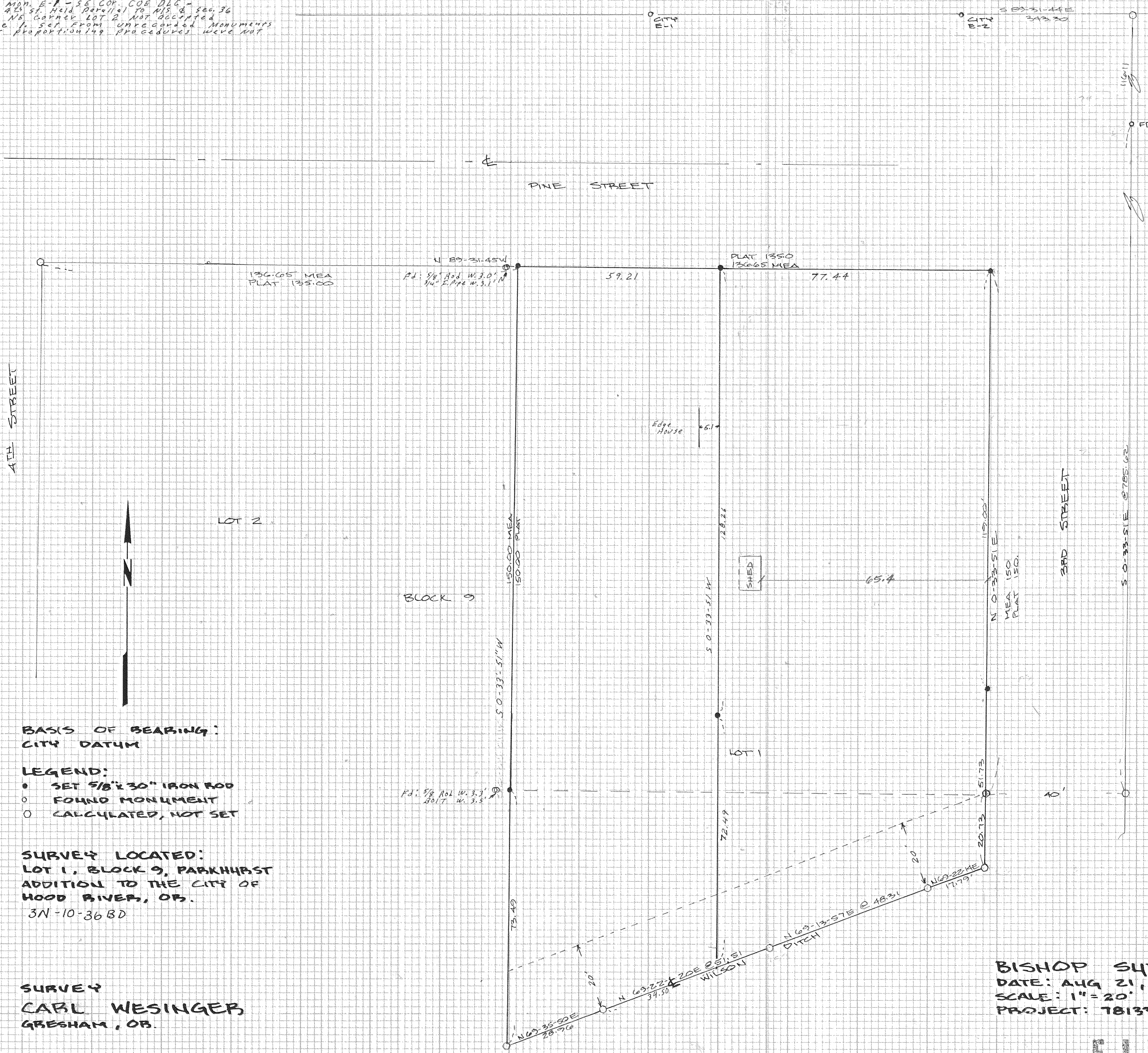


NARRATIVE

Control from City Mon. E-1 - SE COR. COE DIG. -
 1/4 Cor. of CV 1/4 & 42 1/2 ft. Held Parallel to N15.8 sec. 36
 monuments found at NE Corner LOT 2 NOT ACCEPTED
 because they were 1. set from unrecorded monuments
 found and 2. proper proportional procedures were not
 used.



BASIS OF BEARING:
 CITY DATUM

- LEGEND:**
- SET 5/8" x 30" IRON ROD
 - FOUND MONUMENT
 - CALCULATED, NOT SET

SURVEY LOCATED:
 LOT 1, BLOCK 9, PARKHURST
 ADDITION TO THE CITY OF
 HOOD RIVER, OR.
 3N-10-36 BD

SURVEY
 CARL WESINGER,
 GRESHAM, OR.

REGISTERED
 PROFESSIONAL
 LAND SURVEYOR

Larry D. Bishop
 OREGON
 LARRY D. BISHOP
 896

BISHOP SURVEYING
 DATE: AUG 21, 1979
 SCALE: 1" = 20'
 PROJECT: 78133

FILED

APR 7 1980
 COUNTY SURVEYOR

80026