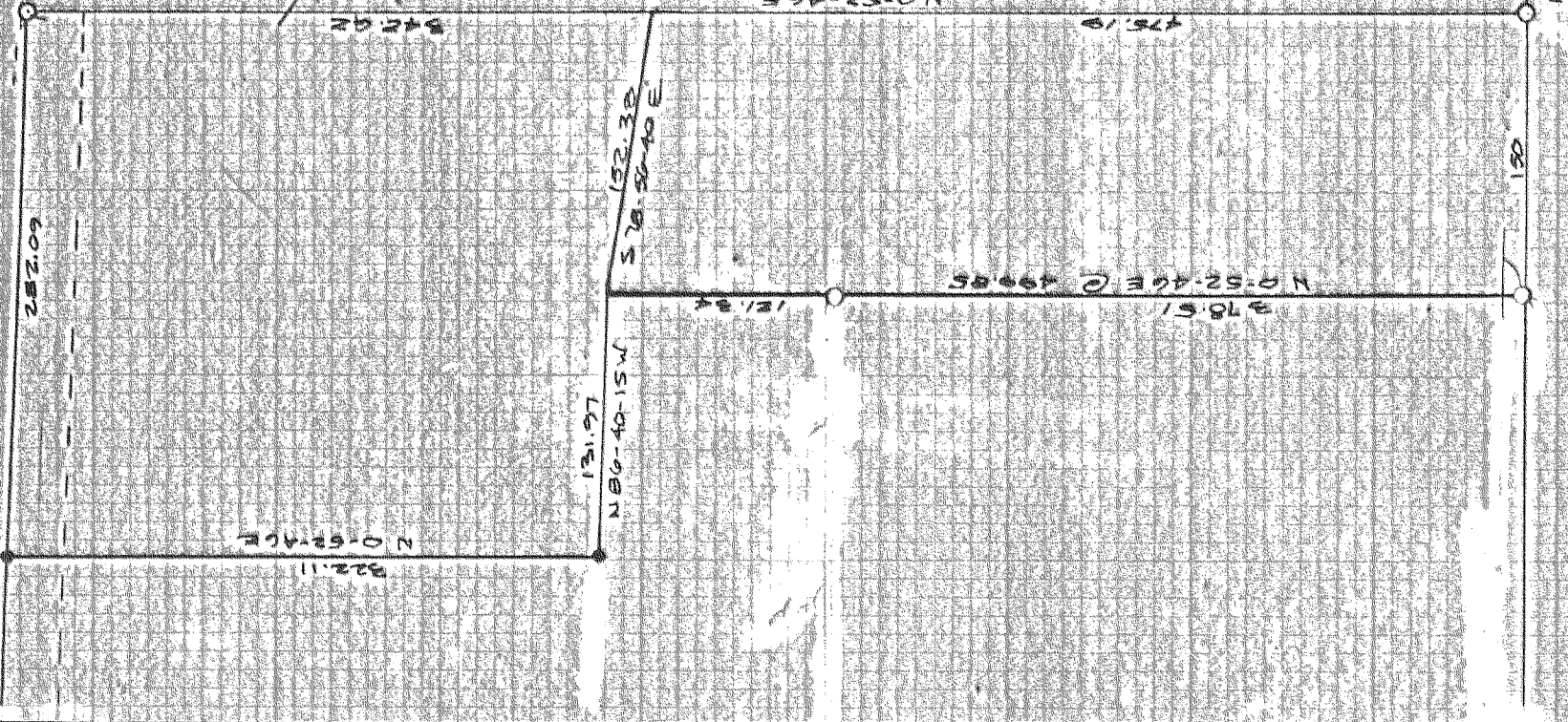


SURVEY FOR  
Harold S. Beach

**FILED**

FEB 7 1980  
*Frank C. Bishop*  
COUNTY SURVEYOR

LOCATION  
NW 1/4, SEC 37, T32N,  
R. 10E, W. 1/4M HOOD RIVER,  
COUNTY, OR



REF. P.M. MOOR'S ORIGINAL NOTES  
BOOK 4, PAGE 50  
FOR EAST 1/4 & CENTER 1/4

288-28-22E  
1320.80  
FO. C. 1/4  
COR. 2' W/4  
E. 1/4  
BRASS  
CAP

**LEGEND**  
○ SET 5/8" IRON ROD  
○ FOUND MONUMENT

REGISTERED  
PROFESSIONAL  
LAND SURVEYOR

*Larry C. Bishop*

REGISTERED  
JULY 1978  
LARRY C. BISHOP  
89.6

Basis of Bearing  
Bishop Surveying Project #778038  
filed with Hood River County

**BISHOP SURVEYING**

DATE: 5-16-179  
SCALE: 1"=100'  
DRAWN: B. GAYLORD  
PROJECT: 186136A

12-043  
80008