

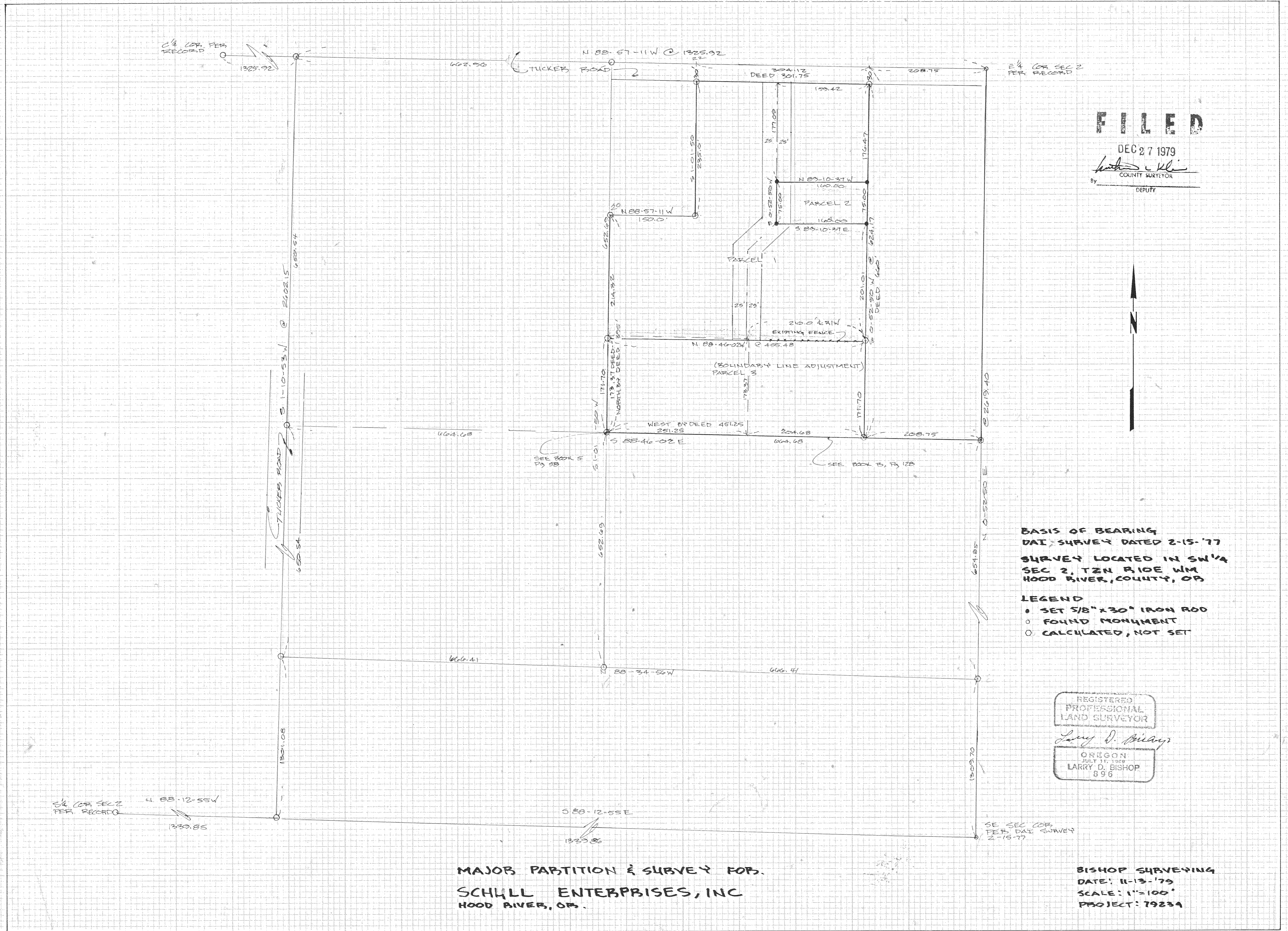
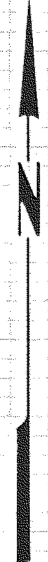
C/4 COR. PER RECORD

E/4 COR. SEC 2 PER RECORD

**FILED**

DEC 27 1979

By *Larry D. Bishop*  
COUNTY SURVEYOR  
DEPUTY



**BASIS OF BEARING**  
DAI SURVEY DATED 2-15-77  
**SURVEY LOCATED IN SW 1/4**  
SEC 2, T2N R10E WM  
HOOD RIVER, COUNTY, OR

- LEGEND**
- SET 5/8" x 30" IRON ROD
  - FOUND MONUMENT
  - CALCULATED, NOT SET

REGISTERED  
PROFESSIONAL  
LAND SURVEYOR

*Larry D. Bishop*

OREGON  
JULY 11, 1959  
LARRY D. BISHOP  
896

**MAJOR PARTITION & SURVEY FOR**  
**SCHILL ENTERPRISES, INC**  
HOOD RIVER, OR.

**BISHOP SURVEYING**  
DATE: 11-13-79  
SCALE: 1"=100'  
PROJECT: 79234

12-091  
79/26