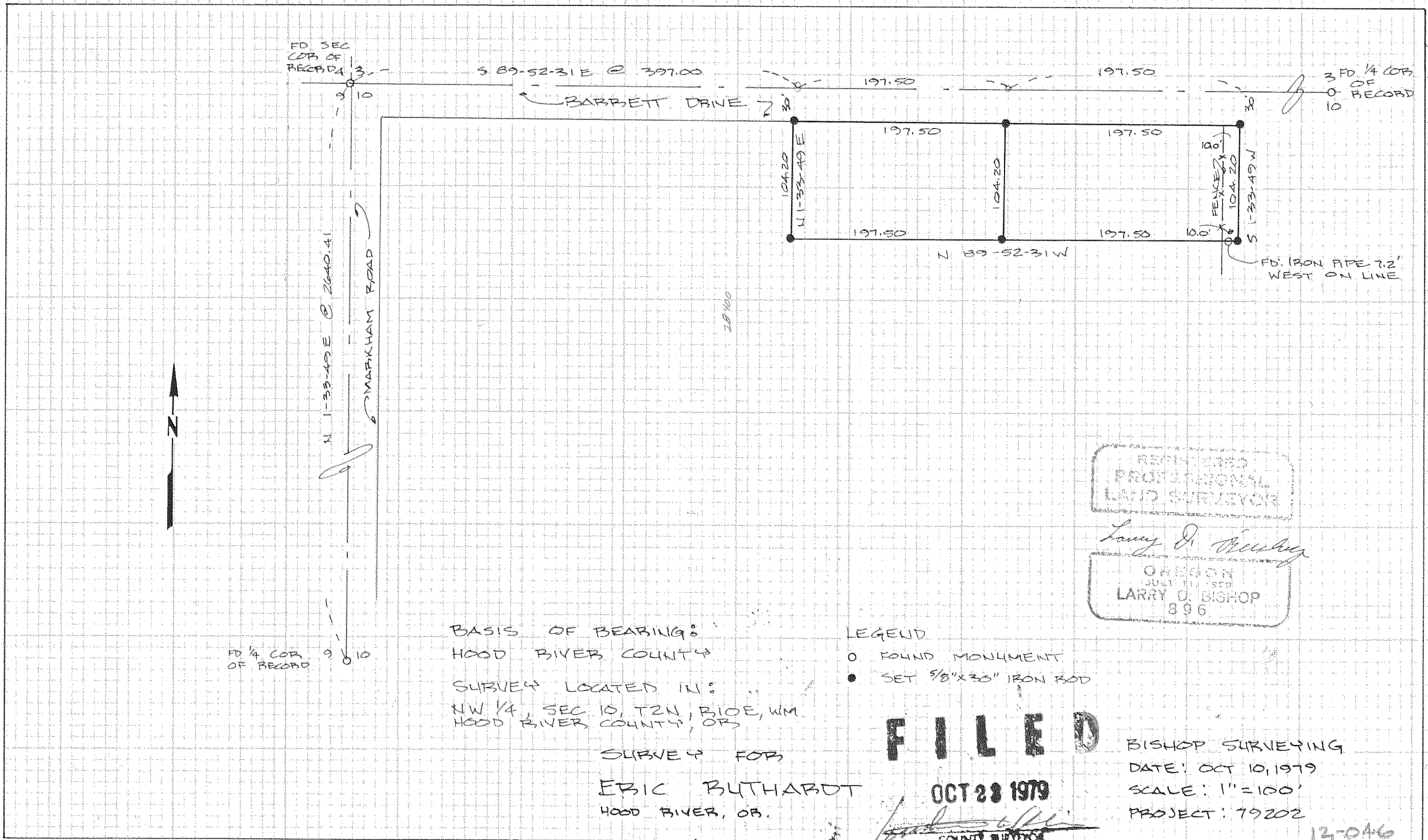


#79109



BASIS OF BEARING:
HOOD RIVER COUNTY

SURVEY LOCATED IN:
NW 1/4 SEC 10, T2N, R10E, WM
HOOD RIVER COUNTY, OR

SURVEY FOR
ERIC RUTHARDT
HOOD RIVER, OR.

- LEGEND
- FOUND MONUMENT
 - SET 5/8" X 30" IRON ROD

REGISTERED
PROFESSIONAL
LAND SURVEYOR

Larry D. Bishop

OREGON
JULY 1980
LARRY D. BISHOP
896

FILED

OCT 28 1979

[Signature]
COUNTY SURVEYOR
DEPUTY

BISHOP SURVEYING
DATE: OCT 10, 1979
SCALE: 1" = 100'
PROJECT: 79202

13-046
79109