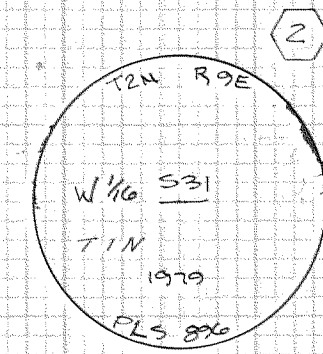
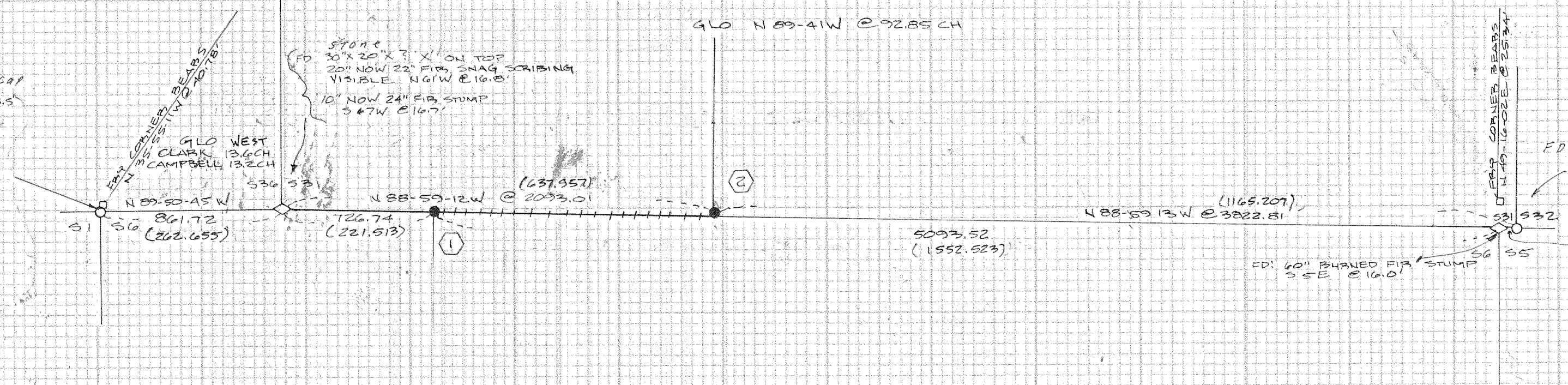


12" D. FIR S82E @ 23.59' SCRIBED  
1/16" SG UPPER BLAZE  
12" D. FIR S48E @ 37.94' SCRIBED  
1/16" SG UPPER BLAZE

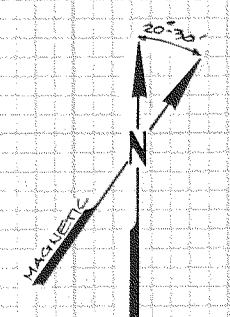


10" D. FIR N5E @ 25.64' SCRIBED  
W 1/16 S31 UPPER BLAZE  
15" D. FIR N54E @ 26.38' SCRIBED  
W 1/16 S31 UPPER BLAZE

Hood River County Brass Cap  
FD: 11" NOW 12" D. FIR S64W @ 53.5' SCRIBED OVERGROWN  
7" NOW 9" D. FIR S64E @ 37.31' SCRIBED OVERGROWN



FD: Hood River County Brass Cap  
20" NOW 28" burnt fir stump N63W - 33.0'  
12" NOW 20" burnt fir stump N70W - 14.3'  
18" NOW 24" burnt fir stump S30E - 8.0'



BASIS OF BEARING - SOLAR OBSERVATION

1" = 500'

BAR SCALE



LEGEND

- SET 2 1/2 INCH BRASS CAP ON A 2 1/2 INCH BY 30" GALVANIZED IRON PIPE WITH A FLAIBED END
- HOOD RIVER COUNTY BRASS CAP
- GEORGE FRIS MONUMENT

REVISD 11-2-79 CHANGED FEET TO METERS & DELETED OWNERSHIP 809

++++ LINE POSTED WITH STEEL FENCE POSTS AND GOVERNMENT PROPERTY SIGNS (321.0214) DISTANCE IN METERS

ALL BEARING TREES MARKED DURING THIS SURVEY HAVE A 3/4 INCH BRASS DISK STAMPED LS 896 NAILED WITH A FINISHING NAIL TO THE LOWER BLAZE WHICH IS SCRIBED BY

HOOD RIVER COUNTY SURVEYOR'S FILE NO 79103

I, LARRY D. BISHOP, A REGISTERED LAND SURVEYOR, IN THE STATE OF OREGON, HEREBY CERTIFY THAT THIS PLAT AND THE NOTES HEREON OR ATTACHED ARE CORRECT REPRESENTATION OF A SURVEY I PERFORMED DURING AUGUST TO OCTOBER, 1979 FOR THE U.S. FOREST SERVICE IN ACCORDANCE WITH THE STATUTES OF THE STATE OF OREGON AND WITH THE ARTICLES OF MY CONTRACT.

*Larry D. Bishop*  
LARRY D. BISHOP

REGISTERED LAND SURVEYOR, NO 896

FILED

OCT 23 1979

*Larry D. Bishop*  
COUNTY SURVYOR  
DEPUTY

REGISTERED PROFESSIONAL LAND SURVEYOR

*Larry D. Bishop*

OREGON  
JULY 11 1958  
LARRY D. BISHOP  
896

PLAT OF SURVEY

USDA, FOREST SERVICE REGION 6  
MT. HOOD NATIONAL FOREST  
DOG RIVER CADASTRAL  
CONTRACT NO 6300-4 DATED 6-29-79

LOCATION: SECTIONS 31 & 36, T1 & 2 NORTH, R9E, WM HOOD RIVER COUNTY, OR.

BISHOP SURVEYING  
PO BOX 729 HOOD RIVER, OR.  
PH (503) 386-5122

PROJECT: 79147  
DATE: OCT 15, 1979

12-068  
#79103