

FD. MONUMENT OF RECORD  
N.E. COR. LOT 20  
A.P.A.

N 89-50-49 W @ 140'

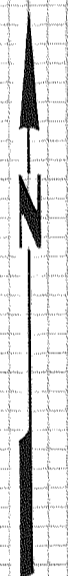
DEDICATED STREET EASEMENT  
N 89-50-49 W

GRAVEL DRIVE

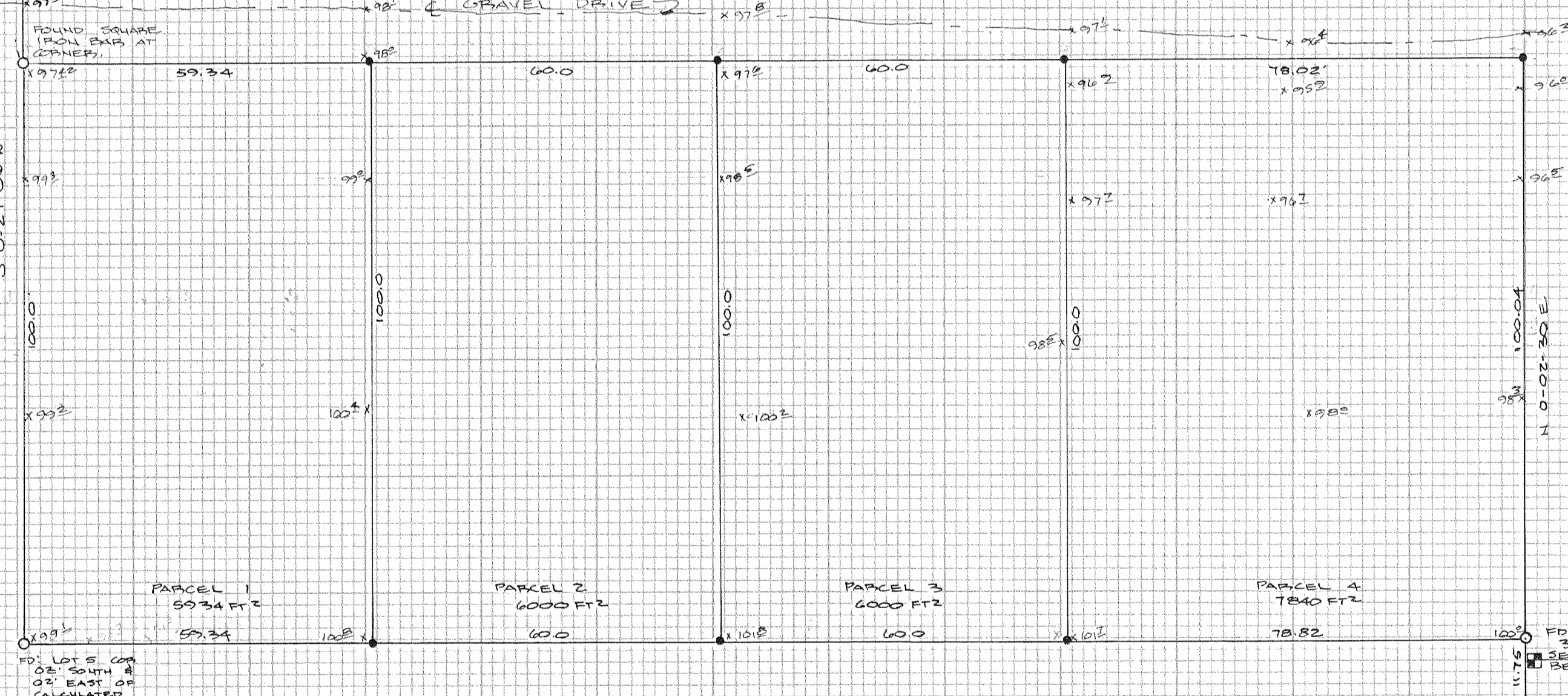
EL 97.42 FOR  
1520 B.M.P.

FOUND SQUARE  
IRON BAR AT  
CORNER

S 0-27-06 W



BAND ROAD



FD. LOT S. COR.  
02' SOUTH &  
02' EAST OF  
CALCULATED

FD. N.E. COR. LOT  
3, BLOCK 3  
SET. HUB ASSUMED  
BENCH MARK EL. 100.00.

FD. MONUMENT OF RECORD  
N.E. COR. LOT 1  
BLOCK 3 GLEN  
MEADOW ADDITION

FD. N.W. COR. LOT 2  
BLOCK 3 N 89-50-49 W @ 170.0'

BASIS OF BEARING  
PLAT LINE OF GLEN MEADOW  
ADDITION TO HOOD RIVER, OR.

SURVEY LOCATED IN  
LOT 20 ADAMS PARADISE ACRES  
TO HOOD RIVER, OR.

- LEGEND
- SET 9/8" X 30" IRON ROD
  - FOUND MONUMENT

3N-10-35 BB

REGISTERED  
PROFESSIONAL  
LAND SURVEYOR  
*Larry D. Bishop*  
OREGON  
JULY 11, 1989  
LARRY D. BISHOP  
896

FOR  
**G & AT CORP.**  
HOOD RIVER, ORE

**FILED**  
MAY 07 1979  
*Larry D. Bishop*  
COUNTY SURVEYOR  
BY \_\_\_\_\_  
DEPUTY

**BISHOP SURVEYING**  
DATE: APRIL 13, 1979  
SCALE: 1"=20'  
DRAWN: R. GAYLORD  
PROJECT: 79053

12-063  
79059