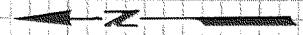
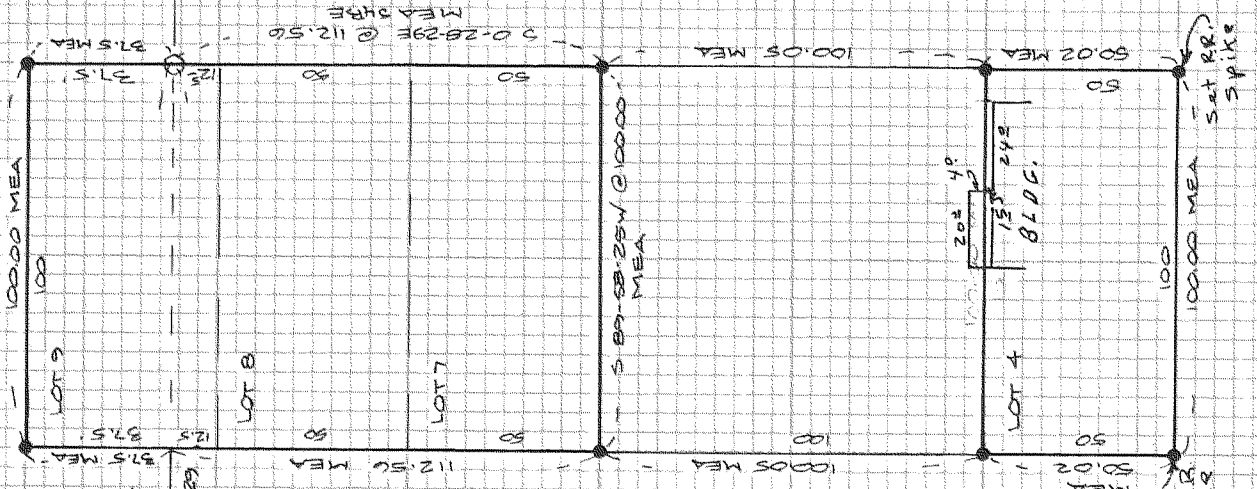


FD. 1/4 COR
OF RECORD

N. 89°-58'-25"E PLAT 904

FD. 1/4 OF
RECORD



FILED

MAY 07 1979

[Signature]
COUNTY SURVEYOR

DEPUTY

SURVEY LOCATED IN
LOTS 9, 8, 7 & 4, 1ST ADDITION
TO GODELL, HOOD RIVER
COUNTY, ORE.

BASIS OF BEARING
ASSUMED - NORTH LINE OF
CHEVRON ROAD

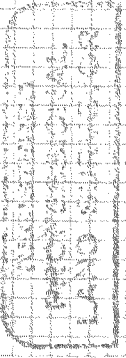
LEGEND

- SET 3/8" X 30" IRON ROD
- FOUND MONUMENT
- CALCULATED, NOT SET.

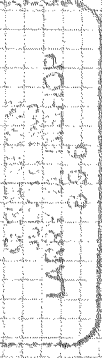
ZN-10-26 C

SURVEY FOR

DIAMOND FRUIT GROWERS
HOOD RIVER, OR.



Larry D. Bishop



BISHOP SURVEYING

DATE: 4-26-79

SCALE: 1" = 50'

PROJECT: 79016

12048

79058