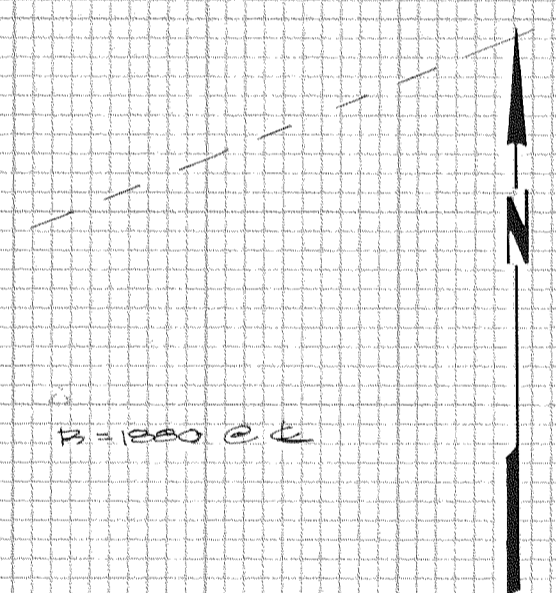


11000

36 31 FOUND MONUMENT OF RECORD



B=1280 @ C

BASIS OF BEARING:
ASSUMED EAST LINE OF SECTION
1 WAS 40-25-43E
SURVEY LOCATED IN:
LOTS 1-8, BLOCK 8 OF
THE TOWN OF WINANS
IN SECTION 1, T1N, R9E, WM
HOOD RIVER COUNTY, OR.

11-98-1ND

FILED
MAY 07 1979
HOOD RIVER COUNTY CLERK

SURVEY FOR
MIKE FOWLER
HOOD RIVER, OR

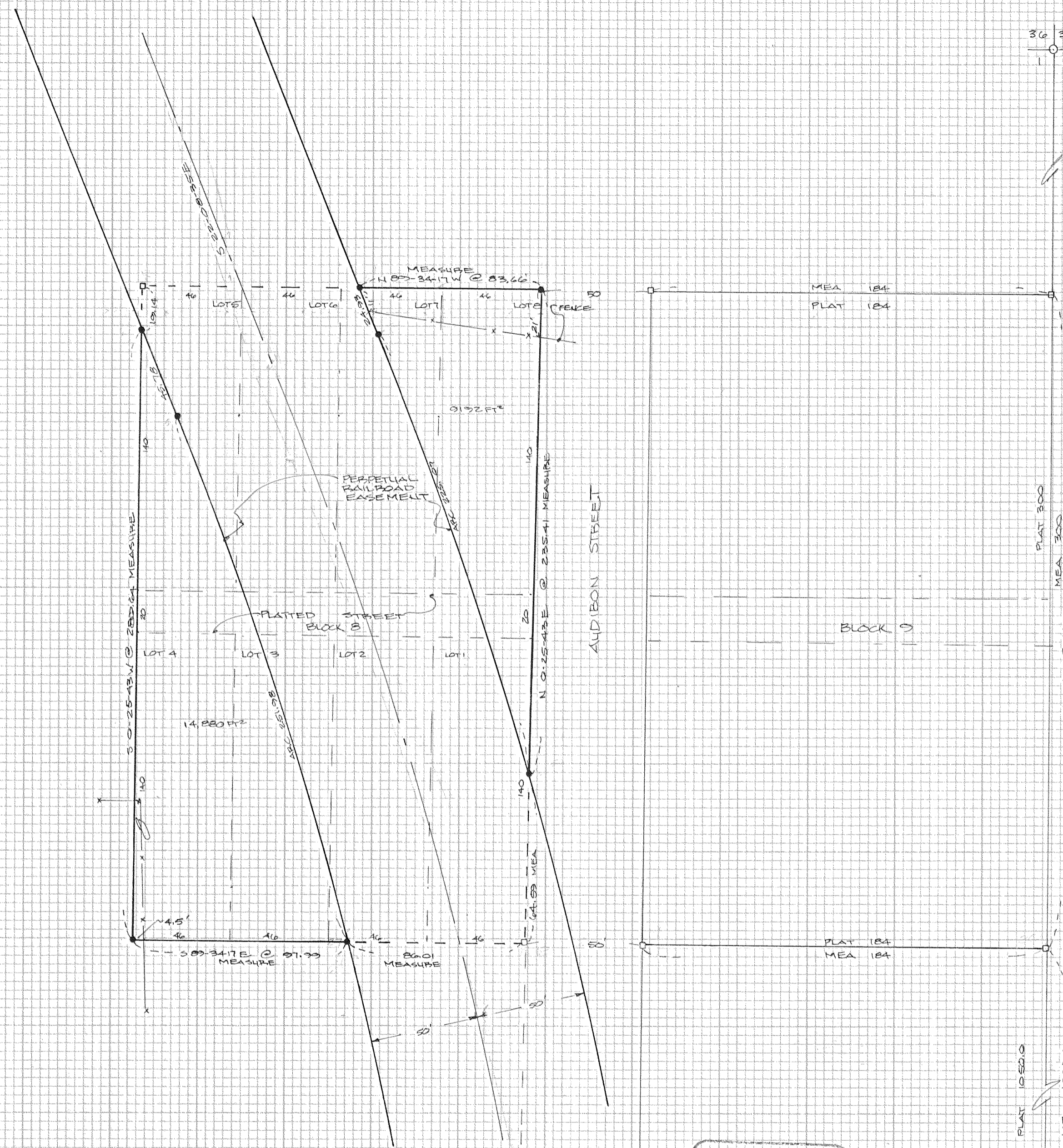
REGISTERED
PROFESSIONAL
LAND SURVEYOR

Larry D. Bishop
JUL 1968
LARRY D. BISHOP
S.S.

BISHOP SURVEYING
DATE: 4-24-79
SCALE: 1"=40'
DRAWN: B. GAYLORD
PROJECT: 19068

12-064

79053



PLAT 300
MEAS 300
N 0-25-43E
HOOD RIVER HIGHWAY #281

WEST 1/4 COR
FOUND MONUMENT
OF RECORD