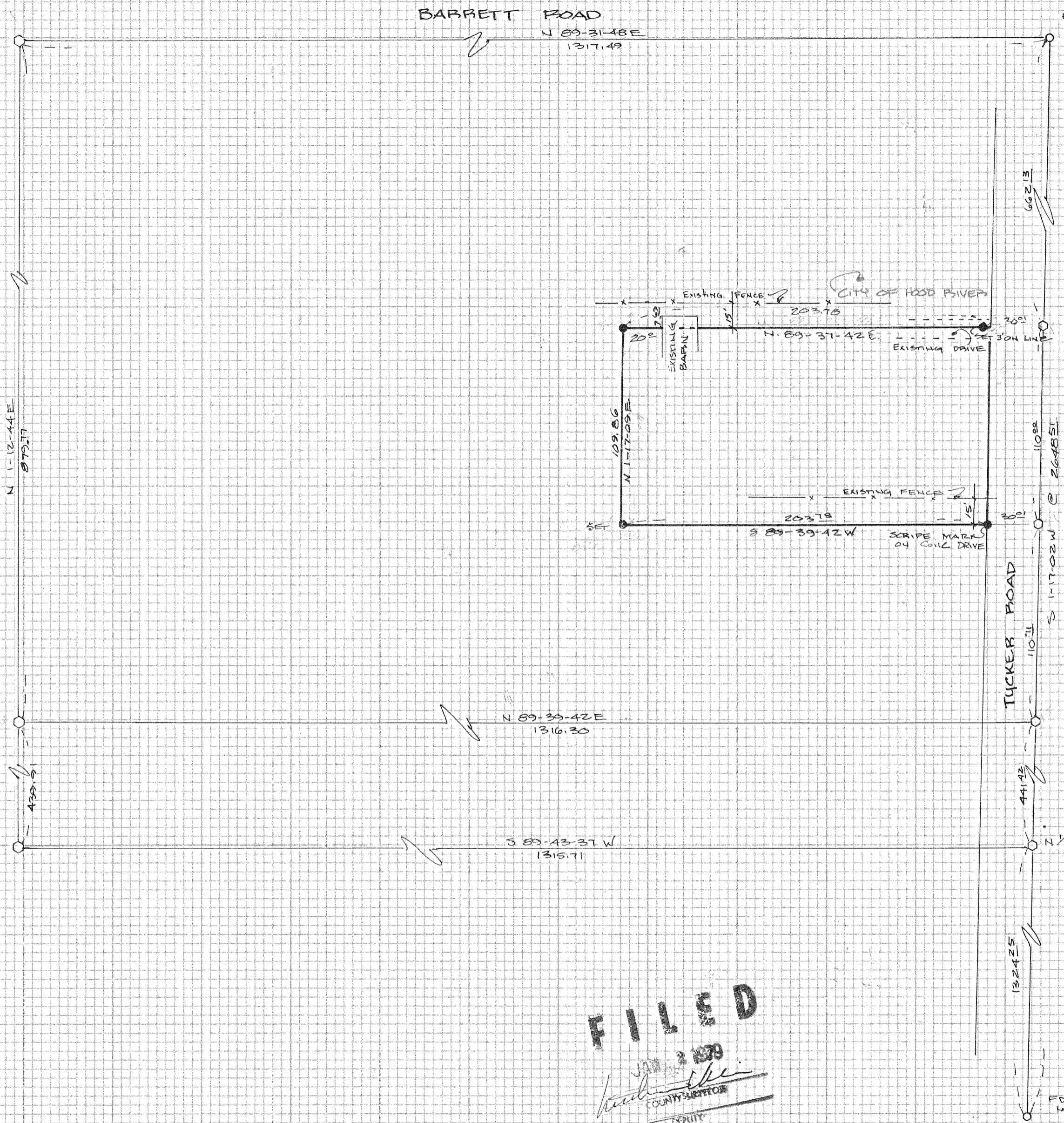


11-101



BASIS OF BEARING
HOOD RIVER COUNTY

SURVEY LOCATED IN
NE 1/4, SEC 10, T2N
R10E, W1M HOOD
RIVER COUNTY

REF: HOOD RIVER COUNTY
COORDINATES

LEGEND:

- SET 5/8" x 30" IRON RODS
- FOUND MONUMENT
- CALCULATED CORNER, NOT SET

FILED
JAN 2 1978
Larry D. Bishop
COUNTY CLERK
DEPUTY

SURVEY FOR
LAWRENCE ADDISON
HOOD RIVER, OREGON

REGISTERED
PROFESSIONAL
LAND SURVEYOR
Larry D. Bishop
OR. L.S.O.
EXPIRES 12/31/1980
LARRY D. BISHOP
896

BISHOP SURVEYING
DATE: OCT 22, '78
SCALE: 1"=50'
DRAWN: B. GAYLORD
PROJECT: 78B122

79021