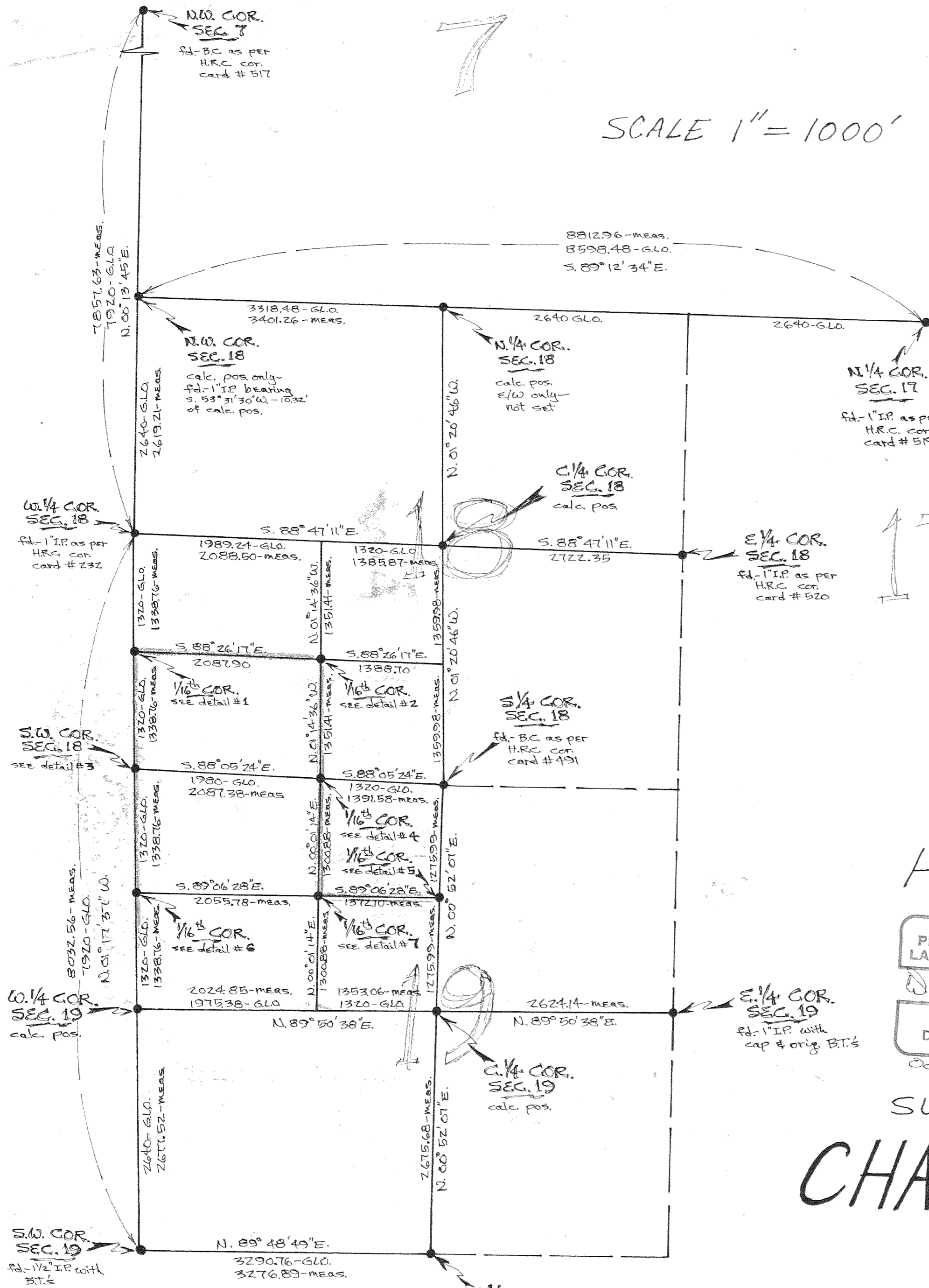


SCALE 1" = 1000'



TIN, R.I.E., W.M.
 SECTIONS 18, 19
 HOOD RIVER COUNTY
 OREGON

REGISTERED
 PROFESSIONAL
 LAND SURVEYOR

Danny L. Cron

OREGON
 AUGUST 22, 1975
 DANNY L. CRON
 1028

Oct. 16, 1978

SURVEY

FILED

JAN 2 1979

By *[Signature]*
 COUNTY SURVEYOR

DEPUTY

CHAMPION TIMBERLANDS

DRAWN BY
L. A. Daley

