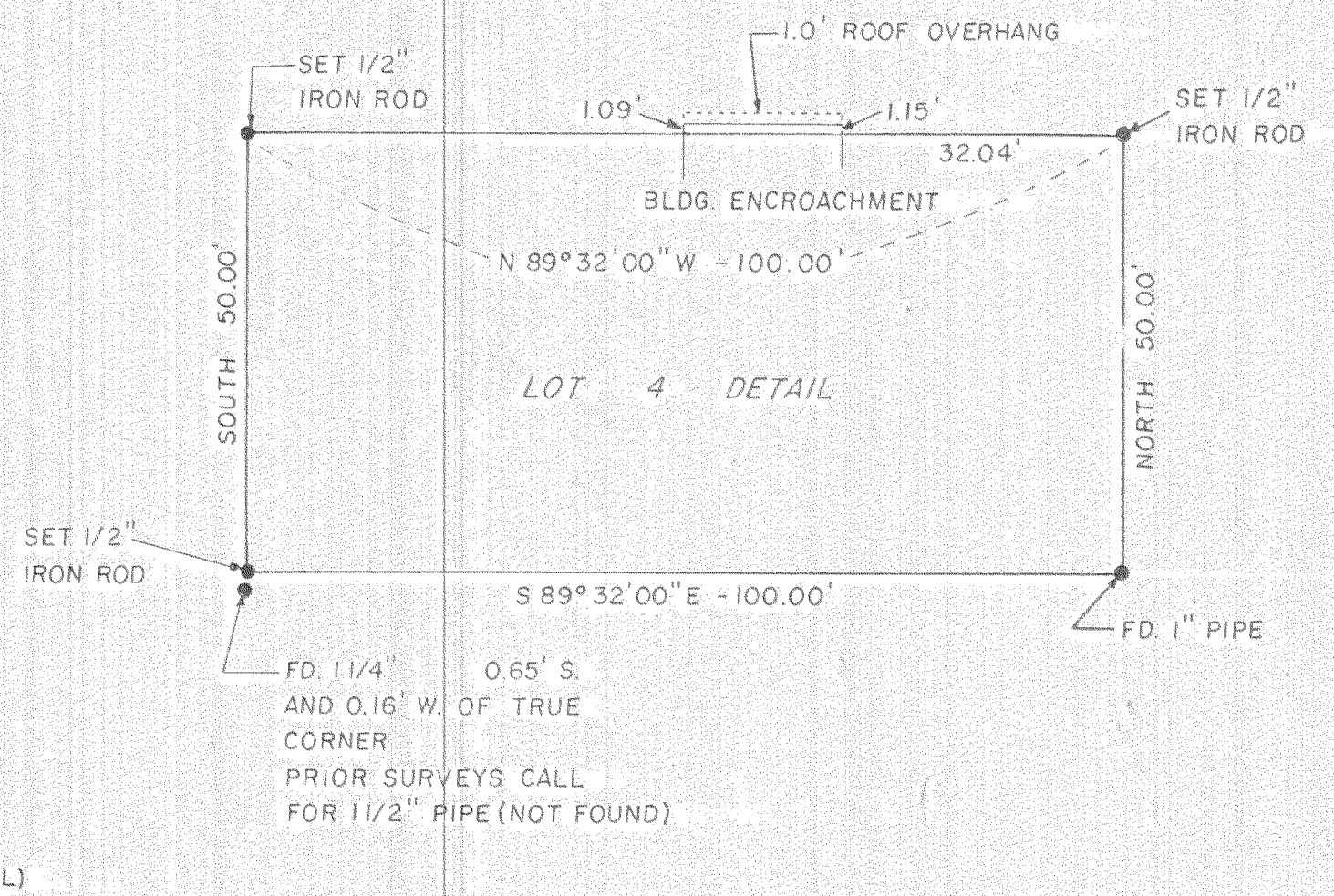


SCALE 1" = 60'



FILED
 MAR 28 1978
 COUNTY SURVEYOR
 DEPUTY

Date No.	Revisions	By	App.

SURVEY FOR
 DIAMOND FRUIT GROWERS INC.
 IN SW 1/4 SEC. 26, T 2 N, R 10 E, W. M.
 ODELL, HOOD RIVER COUNTY, ORE.

Design	TENNESON ENGINEERING CORP.	Scale	1" = 60'
Survey	Consulting Engineers	Date	8-10-77
Drawn	TEC	Work Order No.	5407
Checked	D.E.B.	Sheet	1 of 1

78036 10-129