

C 1/4 COR.
SEC. 4

Found - B.C. as of record - validity not checked

E 1/4 COR.
SEC. 4

Found - B.C. as of record

S 1/4 COR.
SEC. 4

Found - B.C. as of record

S.E. COR.
SEC. 4

Found - B.C. as of record

REGISTERED
PROFESSIONAL
LAND SURVEYOR

Danny V. Cron

OREGON
AUGUST 22, 1975
DANNY L. CRON
1028

Aug. 4, 1977

of SURVEY

FOR - Gary Lockwood

LOCATION - 5 acre tracts

in the S.E. 1/4 of SEC. 4,

T2N., R10E., W.M.

HOOD RIVER COUNTY, ORE.

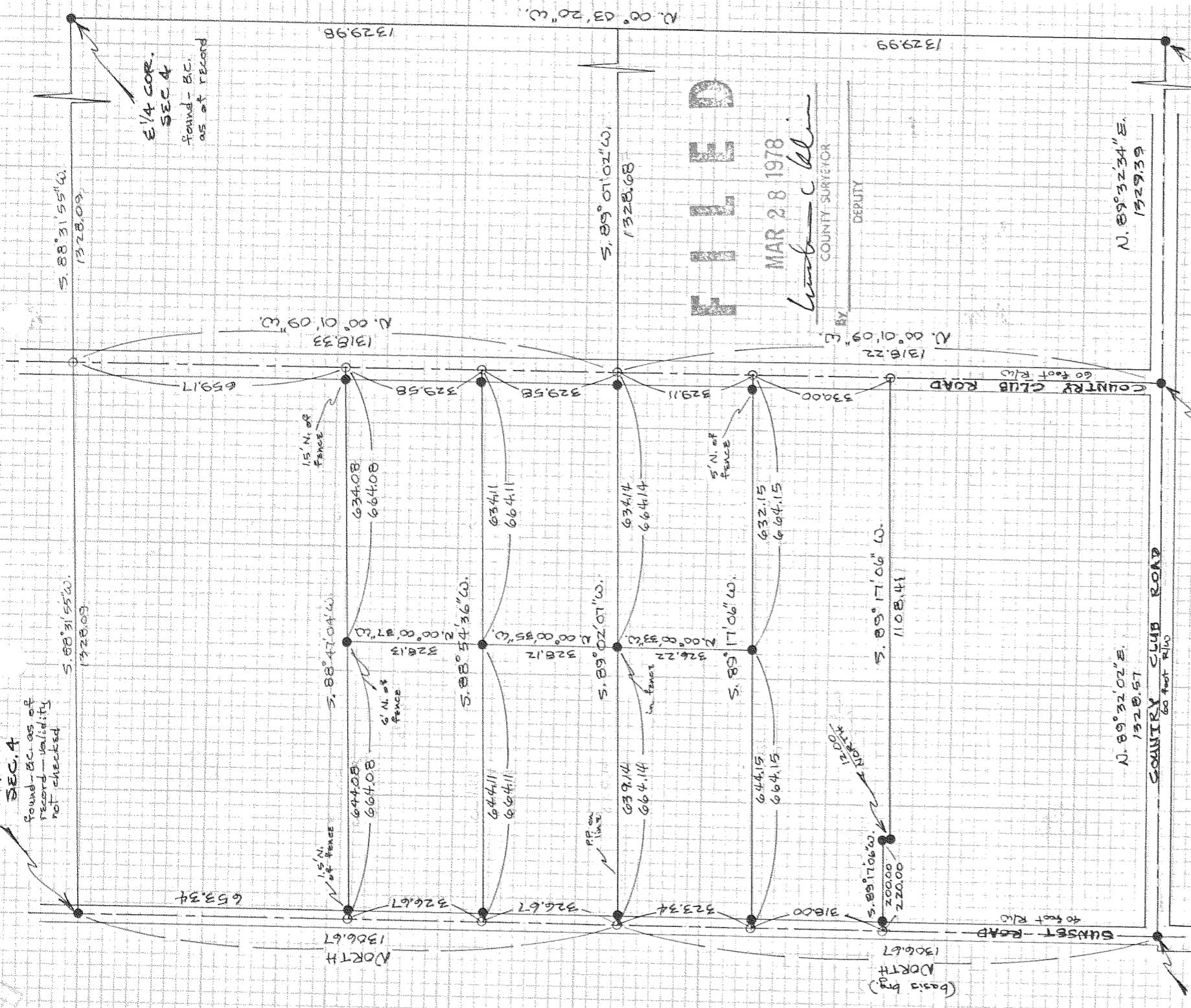
SCALE - 1" = 300'

● = 5/8" IR. monument set unless noted

10-4

78031

20 10 40



FILLED

MAR 28 1978

Lambert
COUNTY SUPERVISOR

DEPUTY

NORTH
1306.67

(basis by)
1306.67

SUNSET ROAD
40 feet R/W

COUNTRY CLUB ROAD
60 feet R/W

COUNTRY CLUB ROAD
60 feet R/W

N. 00° 01' 09" W.
1318.22

N. 00° 01' 09" W.
1318.33

659.17

S. 88° 31' 55" W.
1328.09

S. 88° 47' 04" W.
328.13

S. 88° 54' 36" W.
328.12

S. 89° 02' 07" W.
326.22

S. 89° 17' 06" W.
326.22

S. 89° 17' 06" W.
1108.41

15' N. of
FENCE

5' N. of
FENCE

6' N. of
FENCE

15' N. of
FENCE

634.08
664.08

634.11
664.11

634.14
664.14

632.15
664.15

644.08
664.08

644.11
664.11

639.14
664.14

644.15
664.15

653.34

326.67

326.67

323.34

2000.00
2200.00

318.00

N. 89° 32' 02" E.
1528.57

COUNTRY CLUB ROAD
60 feet R/W

N. 89° 32' 34" E.
1529.39

1/16" COR.

Found - B.C. as of record

position accepted

although not perfect