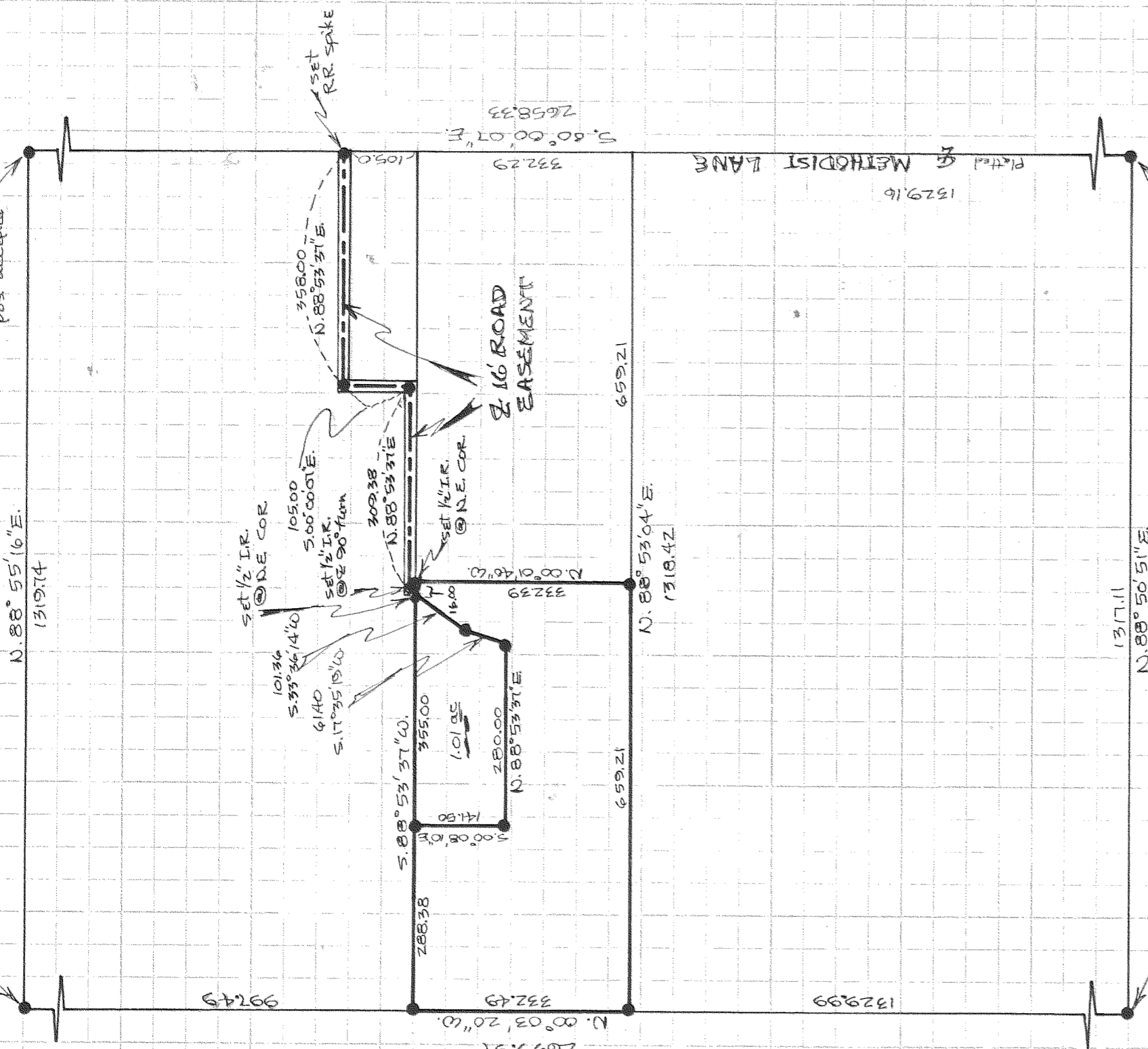


10.1A COR.
1/4 SEC 3
F.D.-B.C. in
MON. CASE
as
of record

1/4 COR.
F.D.-B.C. in
MON. CASE
POS. ACCEPTED



SW COR.
1/4 SEC. 3
F.D.-B.C. in
MON. CASE

1/4 COR.
F.D.-NAIL in
WASHER as
of record
POS. ACCEPTED

REGISTERED
PROFESSIONAL
LAND SURVEYOR

Danny L. Cron

OREGON
AUGUST 22, 1975
DANNY L. CRON
1028

Jan. 31, 1976

FILED

FEB 07 1978

By *[Signature]*
COUNTY SURVEYOR

DEPUTY

00 SURVEY

FOR Herb Martin
LOCATION Parcel located
in the NW 1/4 of the
SW 1/4 of SEC. 3, T.2N,
R.10E, W.M.

HOOD RIVER COUNTY,
OREGON

SCALE = 1" = 200'

● = 1/2" iron rod monument
set unless noted

(assumed basis of bearing)

10-61
78009