

M1122 #

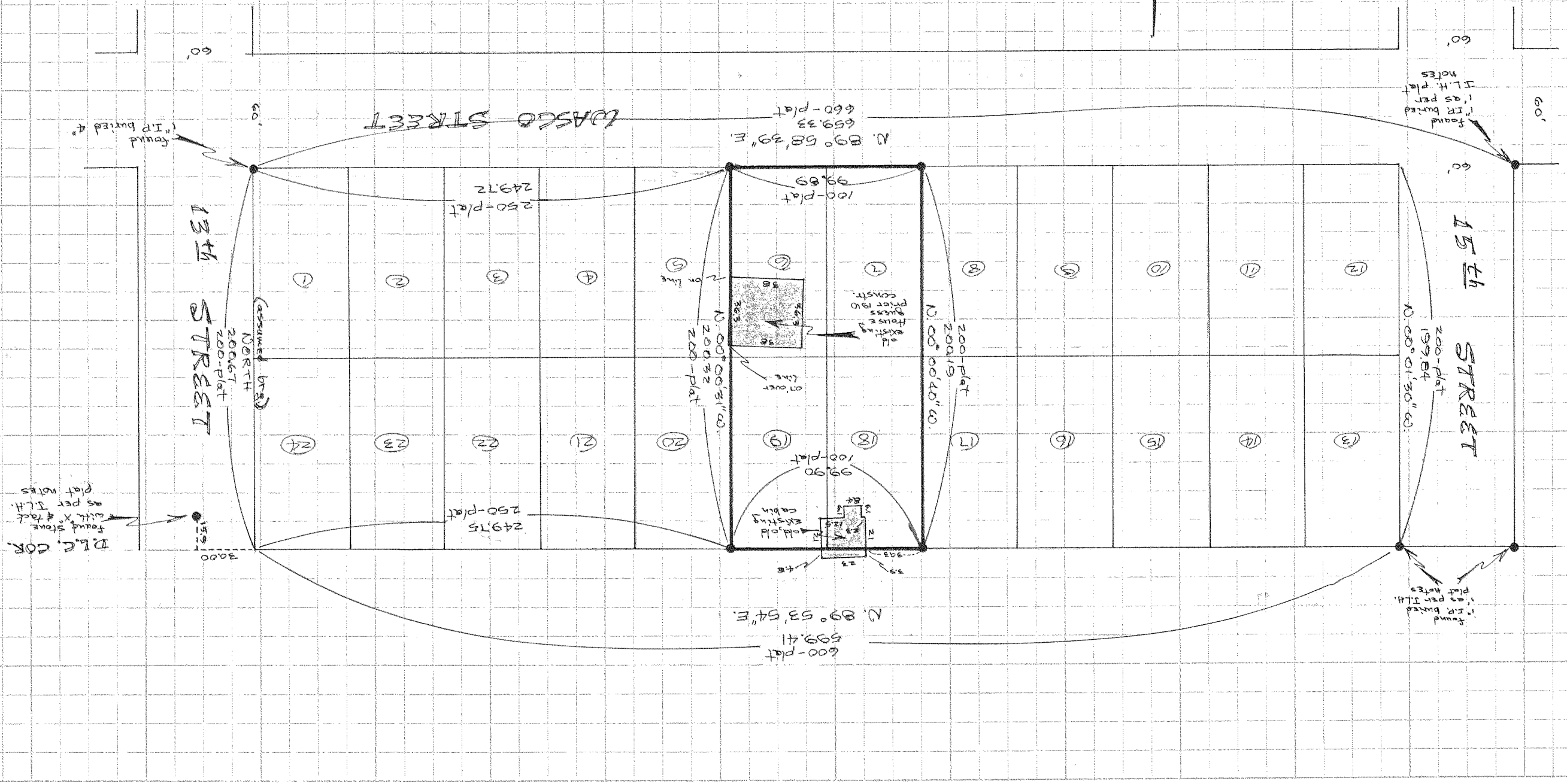
REGISTERED  
PROFESSIONAL  
LAND SURVEYOR  
DANNY L. CRON  
AUGUST 22, 1975  
1028  
OCT 27, 1977

FILED  
FEB 07 1978  
DEPUTY  
COUNTY SURVEYOR  
W. L. ...

Scale - 1" = 60'  
● = 1/2" I.R. Monument SET  
unless noted

ALTA SURVEY  
FOR - Chenev for Equitable S. & L.  
LOCATION - Lots 6, 7, 18, 19  
of Block 5 of Platted  
Amended Plat of Idlewild  
to the City of Hood River  
HOOD RIVER COUNTY,  
OREGON

10-83  
# 77114  
3N 10 26 DA



Found Stone  
with X # rack  
as per I.L.H.  
plat notes  
R.L.C. COR.

Found  
I.R. buried  
as per  
I.L.H. plat  
notes

Found  
I.R. buried  
as per  
I.L.H.  
plat notes

Found  
I.R. buried  
as per  
I.L.H. plat  
notes